

Network Rack Panel Installation Method





Network Rack Panel Installation Method



Rack Mounting and Enclosure Options: A

Whether you're setting up a new network or reorganizing an existing one, mounting racks and enclosures effectively is crucial for maintaining a clean, efficient, and

Complete Guide to Patch Panels: Types, Benefits, and

Discover everything you need to know about patch panels, including different types, their benefits, and installation tips. Enhance your network



Installing a 19" Network Rack (at home)

Installing a home network rack is a great way to make your home network cleaner and more manageable. Follow us as we install one in our home!

Conquering Cable Chaos: A Guide to Patch Panel and

By mastering the art of patch panel and rack installation, you'll not only conquer cable chaos but also pave the way for a streamlined, efficient, and



Guidelines for Server Rack Organization

Without an effective rack cable management solution, the cables inside a server rack can quickly turn into a tangled mess, creating significant



Network Rack Installation 101: Basics You Need to Know

Read the article to know the basics of network rack installation, from choosing the right rack type to cable management and maintenance tips.



Learn Network Cabling

Learn with us as we build a medium sized network - about 115 wires, 3 switches, UPS, and related items, all configured within a 4 Post rack by ICC. We cover a ton of items, from pulling the cables





How to Rack a Server: Step-by-Step Guide & Best

Learn how to rack a server with this detailed step-by-step guide. Includes setup tips, cable management, cooling, and safety practices.

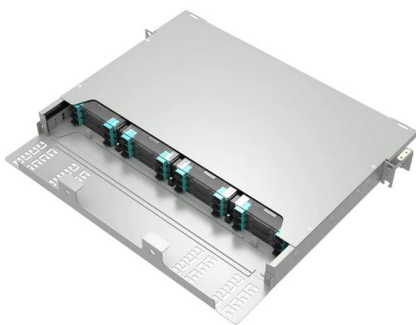


Network Cabinet Cabling: Guide & Documentation Tips

Practice-oriented guide to network cabinet cabling with documentation template, safety aspects & software tips.

How to Install a Rack Mount Patch Panel?

When a patch panel associated with the rack mount, it refers specially to a kind of patch panel connecting with racks or rack mount enclosures in a



RACK INSTALLATION Best Practice Guide

The steps below will ensure your installation promotes the best environment for your equipment; is compliant with facility rules; and, will not require adjustment or re-installation.



A Cabinet and Rack Installation

Figure A-1 shows the installation of the shelf bracket kit into a four-post EIA rack.



Rack installation instructions

Remove the rack doors and side panels to provide easier access during installation. Connect the server to a properly grounded outlet. Do not overload the power outlet when you install multiple devices in

Server Rack Cabinet Installation Checklist

A successful rack server installation guide not only helps optimize equipment performance but also ensures long term scalability and safety.



Organising and wiring a rack cabinet: a complete guide

A rack panel can be open, closed or hybrid, and offers various depths, finish types, IP ratings and installation types. Floor-mounted network cabinets are mainly used



How to Correctly Wire a Network Rack? - VCELINK

A network rack, also called a server rack, is a structure or framework designed to contain the network equipment (for example, routers, servers,



6 Ways to Streamline Your Rack Installation Workflow

In the fast-paced world of network and A/V installation, delays are costly and efficiency is everything. Whether you're setting up server rooms, media closets or remote cabinets, a smooth

Installing a Network Rack in My House

After about a month of work I've finally finished installing my new network, all contained in an actual network rack. If you want to see what my



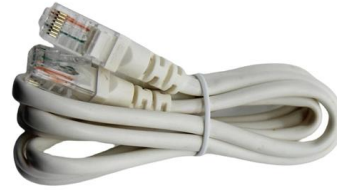
25 Steps For Installing New Server Racks

Address security concerns. If you are concerned about unauthorized access to your servers and network, iron out any wrinkles before you install your new equipment, which only adds



A Cabinet and Rack Installation

As a temporary or permanent support when installing a switch in a four-post EIA rack (can use to provide support during installation and then remove once rear brackets are securely attached to rack)

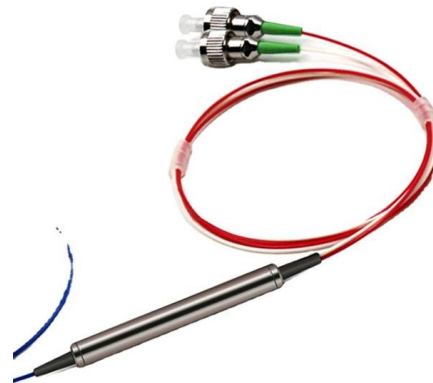


25 Steps For Installing New Server Racks

We put together this step-by-step guide to help you through the process. There may be some variation in steps depending on the brand and type of rack you choose (two-post racks versus

How to Mount a Network Rack , Mount a Network Wall Cabinet

In this video I show you how I mounted a Tripp Lite SRW12US SmartRack 12U Wall Mount Rack Enclosure Cabinet. It has a nice wall plate that you can install so you don't have to struggle to get the



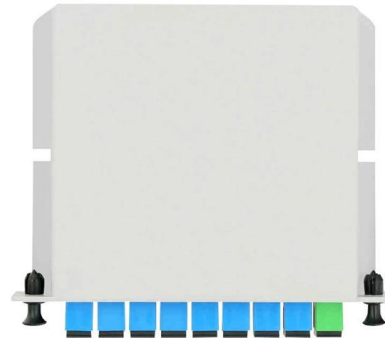
Microsoft Word

Install the server only in a rack that has perforated doors. Do not block any air vents, usually 15 cm (6 inches) of air space provides proper airflow. Plan the device installation starting from the bottom of



How to Install Patch Panel and Switch?

Patch panel and switch are commonly used to connect devices in data centers and telecom rooms, and they are usually mounted on a server rack.

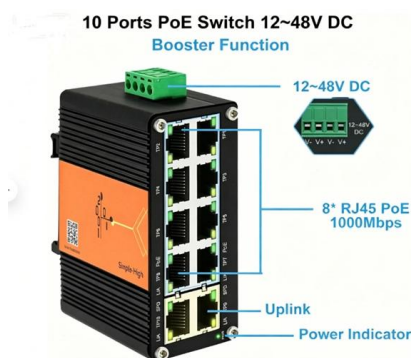


Complete Guide to Patch Panels: Types, Benefits, and Installation Tips

Discover everything you need to know about patch panels, including different types, their benefits, and installation tips. Enhance your network efficiency with our comprehensive guide.

How To Wire a Server and Network Rack , Tips & Best

What we present here are suggestions and not rules, and there might be a strategy that works out better for your particular installation. Always have



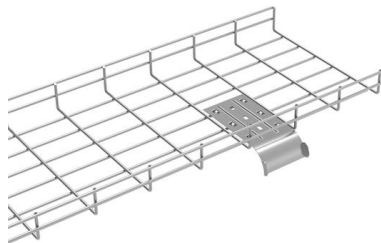
Network Rack Installation Guide

Learn how proper network rack installation improves cable management, airflow, security, and long-term network reliability for business infrastructure.

Structured Cabling Patch Panel Setup Guide for Your



Our guide delivers actionable, step-by-step best practices for rack layout, cable management, and patch panel installation. Following these steps



Planning Effective Power and Data Cable Management in IT Racks

The most effective method for managing cables in high density environments is to implement patch panels or switches dedicated to cabling for a particular rack. These small switches or patch panels

Network & Server Rack Setup Best Practices

Learn network & server rack setup best practices. Get tips for how to setup a server or network rack, how to layout your equipment, & enhance your



New Rack

In today's episode "New Rack - Step By Step Tutorial". I decided to made this tutorial when i visited a friend of mine. He likes all tech stuff and he is always adding new things!



Contact Us

For datasheets, pricing, or custom high-speed optical interconnect solutions, please visit:

<https://syropy.com.pl>