

Network switch optical port module





Network switch optical port module



What is Differences Between Switch Optical Ports and Ethernet Ports

Ethernet speeds up to 1000M can be supported by Cat5 or Cat6 cables, while 10G networks require cables of at least Cat6A grade or higher. Key differences between switch optical

IES82162XMH-S-RP

We provide a full line of EtherXtra multi-channel Ethernet over coax (EoC) and Ethernet over UTP (Cat5) extenders, PoE media converters, IGMP multicasting industrial Ethernet switches for IP video

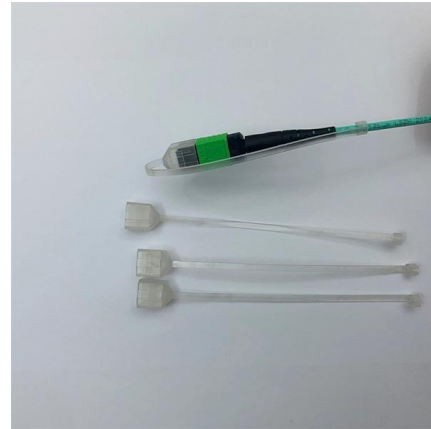


Optic Modules Datasheet

Features and Benefits The following table lists the different pluggable optic modules and supported platforms, along with the technical specifications for each.

POLATIS Optical Switch Modules from 16x16 up to

POLATIS Series 6000 Optical Switch Modules (OSM) are high-performance, fully non-blocking all-optical matrix switch modules with port counts from 16xCC up to



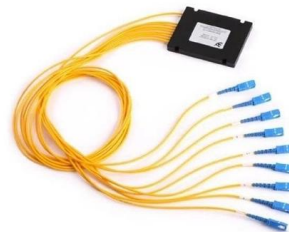
Cisco Networking for Service Providers

Find the scalable network infrastructure and software solutions to address your challenges with Cisco Networking for service providers.



Fiber Optic Network Switches , Ethernet to Fiber

Our Ethernet network switches with fiber ports comes in managed or unmanaged formats combined with both Industrial and Commercial grades. Utilize our PoE



What Is an All-Optical Ethernet Switch?

All-optical Ethernet switches are a type of switch that provides optical uplink and downlink ports, making them an ideal choice for building an all-optical campus network. They can function as



Where co-packaged optics (CPO) technology stands in

Co-packaged optics (CPO) technology, a key enabler for next-generation data center architectures, promises unprecedented bandwidth density



Estink SFP Ethernet Fiber Optic Switch, 1000m Ethernet

Up to 120km : Fiber transceiver provides multiple Gigabit SFP



What Is an All-Optical Ethernet Switch?

An all-optical Ethernet switch provides both optical uplink and downlink ports, and uses optical fibers that feature high transmission speed, large bandwidth, and strong anti-interference



- Full Customization Support
- Free Design & Fast Sample Service
- Eco-friendly & Certified Materials
- Strict Quality Control

SGS CE ISO 9001:2015
BSCI GCC

XPO: Redefining Pluggable Optics for AI Networking

To address these challenges, Arista Networks, together with an ecosystem of more than 45 industry partners, introduces eXtra-dense Pluggable Optics (XPO) . XPO represents a new class of optical



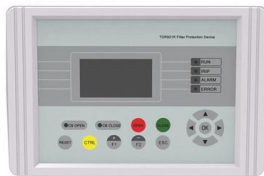
4 Port 10/100/1000 RJ45 to Fiber Switch

It supports dual optical SFP modules and Gigabit transmission speeds, with a 1000Base-T maximum transmission distance of the Fibertronics SFP module



AOC, DAC, Fiber Optic Transceivers , One-Stop Shop

Fiber Optical Cable OM3 Duplex OM5 Duplex OS2 Simplex MPO-MPO Extension QSA (40G/100G) SFP+/QSFP Extension Loopback SFP+/SFP28 Loopback Fiber



Adtran

Adtran is a leading global provider of open, disaggregated networking and communications solutions that enable voice, data, video and internet



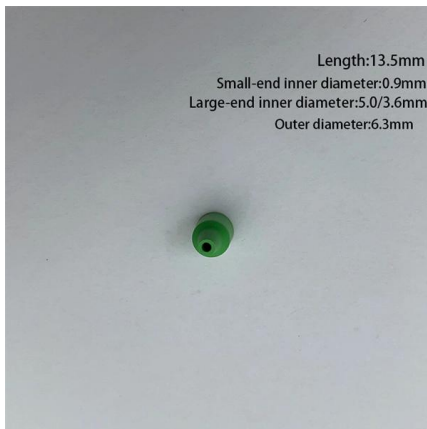
Optical Circuit Switch

Enable new AI architectures with the Optical Circuit Switch (OCS) The OCS optimizes data center networks by minimizing electrical switches and optical



Application Guide: Connecting Fiber-ready Network

When connecting terminated duplex fiber optic cable between two network switches, ensure the connections are reversed between the SFP transceiver ports



What Is SFP Module in Network Switch?

With their diverse types and powerful functionality, switch SFP modules are essential components for enabling efficient and flexible communication through a switch's

What Is SFP Module in Network Switch?

Conclusion With their diverse types and powerful functionality, switch SFP modules are essential components for enabling efficient and flexible communication



Solutions , Nokia

Optical networks Nokia optical network solutions for transport networks with advanced coherent optical engines, scalable open optical line systems, and AI



800G Client Optics in the Data Center

The introduction of 800G switch ports, optical modules, and DACs provides a significant opportunity for service providers to upgrade network performance without waiting for the 800GE standards.

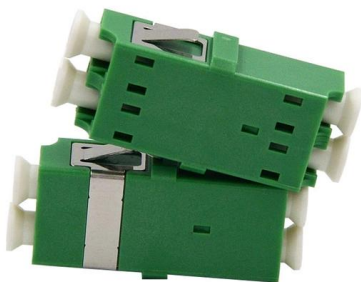


What is Differences Between Switch Optical Ports and Ethernet Ports

Optical ports on switches typically accommodate optical modules for transmitting data via fiber optic cables. In situations where there's a shortage of Ethernet ports, some users may insert

All-Optical Ethernet Switch Explained: Features and

An all-optical Ethernet switch is a network switch whose service ports are entirely optical, meaning every interface uses fiber rather than copper. This



Amazon : Optical Network Terminal

Optical network terminals provide a seamless bridge between fiber optic and Ethernet networks. Discover plug-and-play convenience and auto-negotiation features.



Common Optical Modules and Interfaces for Switches

A comprehensive understanding of Switch Optical Modules, Optical Interface Types, and Fiber Optic Connectors is essential for network engineers, technicians, and anyone involved in

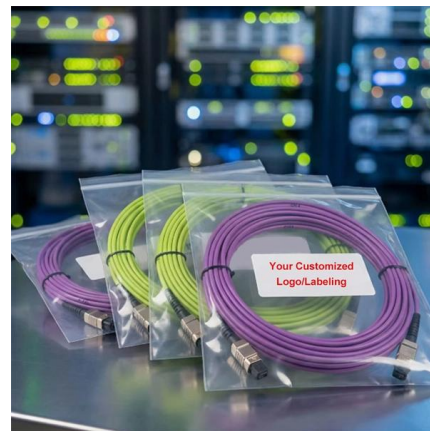


View the Optical Module Status on a Switch through the

This article provides instructions on how to view the Optical Module Status on your switch through the Command Line Interface (CLI).

What is an Optical Switch Module?

Multiple Ports: Optical switch modules come with varying numbers of input and output ports, allowing for complex network configurations.
Switching Speed: The speed at which the switch



Contact Us

For datasheets, pricing, or custom high-speed optical interconnect solutions, please visit:
<https://syropy.com.pl>