

Node Aggregation Switch





Overview

Each aggregation switch is physically connected to all edge switches and participates in multiple EAPS domains. Use these nodes to generate several requests in response to one input message, to control and coordinate the responses that are received in response to those requests, and to combine the. Amounts or summary statistics are used in place of atomic data rows, which are often collected from several sources when data is aggregated.



Node Aggregation Switch



The Importance of Using an Aggregation Switch in LAN Designs

When designing a Local Area Network (LAN), ensuring stability, performance, and scalability is crucial. One of the best approaches to achieving these goals is by using a central

Aggregation Operations

In this guide, you can learn how to use the MongoDB Node.js driver to perform aggregation operations. Aggregation operations process data in your MongoDB collections and return computed results. The



Core, Aggregation, or Access Switches? Choose the

Discover the crucial differences between core, aggregation, and access switches. Find out which type can best transform your network's

Switch Engine v33.2.1 User Guide

Each aggregation switch is physically connected to all edge switches and participates in multiple EAPS domains. The aggregation switches can serve a different role within each EAPS domain, with one

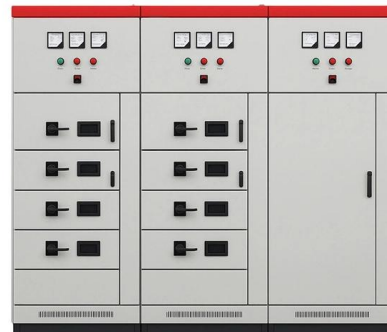


What Is an Aggregation Switch and How to Choose?

As the physical part of the aggregation layer, aggregation switches typically play a crucial part in the overall network architecture. So, what exactly is an aggregation

Huawei S6730 Switch - 10GE Aggregation & Core

Explore Huawei S6730 Switch: 24-48 10GE access, 40/100GE uplinks, VXLAN/BGP-EVPN, built-in WLAN AC, SEP/ERPS resilience, telemetry,



What is an Aggregate Switch?

What is the difference between an aggregate switch and a core switch? An aggregate switch consolidates traffic from access switches, while a core switch forms the backbone of the

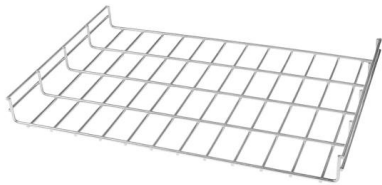


OM3 Fiber Patch Cable Family



What is an Aggregation Switch? , Features and Practical Benefits

Conclusion: What is an aggregation switch? In network architecture, they are now extremely important. The technology behind these switches is link aggregation which is the process

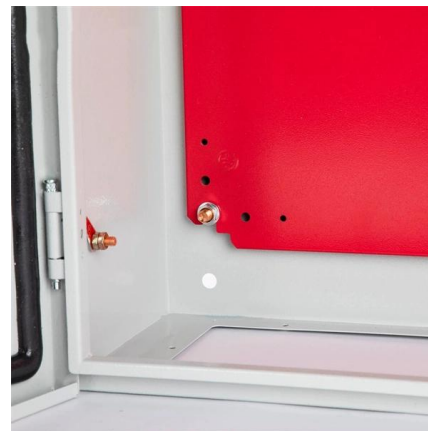


Aggregation layer , FortiSwitch 7.6.0 , Fortinet Document Library

Aggregation-layer platforms The most appropriate FortiSwitch unit to form the aggregation layer comprises many 10/25/40 gigabit Ethernet ports to address the access layer and a few 100-GbE

Aggregation switches and routers

The expected growth of gigabit and multigigabit services requires operators to architect network access scalability upfront. For this reason, we have delivered a



Aggregation Layer

The switch at the aggregation layer collects bits of communication from the edge layer, and conveys them to the core layer switch. The switch at the core layer connects to the Internet, and manages



Aggregation Switch

An aggregation switch refers to a type of switch used to connect multiple ToR switches to a core switch/router in a cloud data center network. It enables high-bandwidth aggregation ports to be



Why You Need a Fiber Aggregation Switch and How it

What is a Fiber Aggregation Switch? Understanding Fiber Aggregation Fiber aggregation is the act of combining many fiber optic cables into

What is an Aggregate Switch?

What is an Aggregate Switch? Understanding Centralized Network Management An aggregate switch is a high-capacity network switch that consolidates connections from multiple



In-depth analysis: What is an aggregation switch?

In many network constructions, we have all heard of switches. So do you really understand switches? Why are aggregation switches often overlooked?



Aggregation Node

The aggregated data is transmitted via the control node of the cluster to the optimal open flow switch. This approach helps to reduce the controller overhead; however, the energy consumption is not



Port Aggregation Configurations

Port Aggregation Port aggregation allows you to group multiple physical ports into one unit. Port aggregation is useful for implementing load balancing and provides a redundant link backup. To

What Are Aggregation Service Routers (ASR)?

What Are Aggregation Services Routers (ASR)? Aggregation services in routers and edge platforms help enable network edge routing. These devices combine traffic



What is Switch Aggregation, Its Role and Selection Advice

Switch aggregation refers to the concept of consolidating multiple access layer switches into a single aggregation layer switch in a traditional three-tier network design.



Aggregation Switch

An Aggregation or "Top-of-Rack" switch is designed to connect everything in a rack at high speeds, then have an even bigger pipe out to the rest of the network.



What is an Aggregation Switch?

The aggregation switch is located in the middle of the network architecture, which is equivalent to a middle-level manager of a company. It

FS Community

Hier sollte eine Beschreibung angezeigt werden, diese Seite lässt dies jedoch nicht zu.



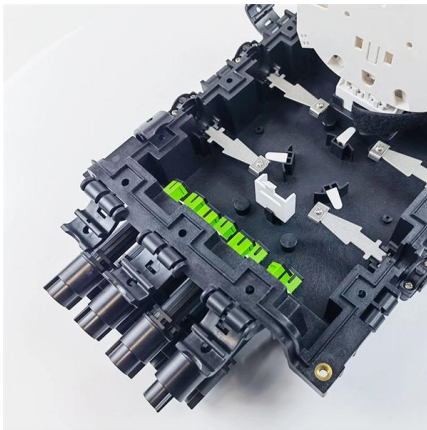
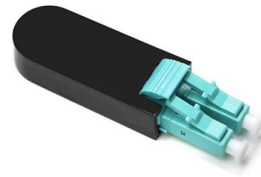
In-network aggregation for data center networks: A survey

Aggregation switches store and aggregate them, then send results to next hop in the tree for further aggregation. Root switch (or root server) in the tree will deal with partially-aggregated data



Use MongoDB Aggregation Framework in NodeJS

The MongoDB aggregation framework in MongoDB with Node.js is used to process and analyze data within collections. It works through aggregation

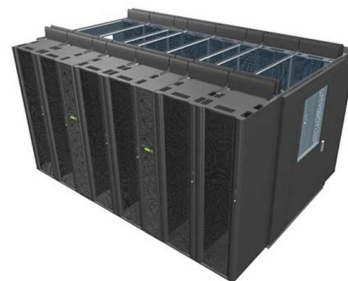


What is an Aggregation Switch? , Features and Practical Benefits

It is a networking tool called an aggregation switch that enables the consolidation of several network connections into a single link. This makes it possible to boost bandwidth and

Aggregation Network

Workers send their packets of intermediate data into the aggregation tree. Aggregation switches store and aggregate them, then send results to next hop in the tree for further aggregation. Root switch (or



Group nodes and aggregation nodes

Group nodes and aggregation nodes provide alternative ways to collate related requests and responses.

Novalink RS-Series Outdoor Aggregation



Novalink RS-Series Outdoor Aggregation Switch
Aggregate Everything, Everywhere WISI's
innovative Novalink Outdoor Aggregation Switch
is meticulously crafted to



Everything You Need to Know About Aggregation Switch

What is an Aggregation Switch and How Does it Work? An aggregation switch consolidates data traffic from multiple network access

What is Switch Aggregation, Its Role and Selection Advice

This article wraps up "what is switch aggregation" and suggestions for choosing an aggregation switch. By considering these factors, network administrators can make informed



Contact Us

For datasheets, pricing, or custom high-speed optical interconnect solutions, please visit:
<https://syropy.com.pl>