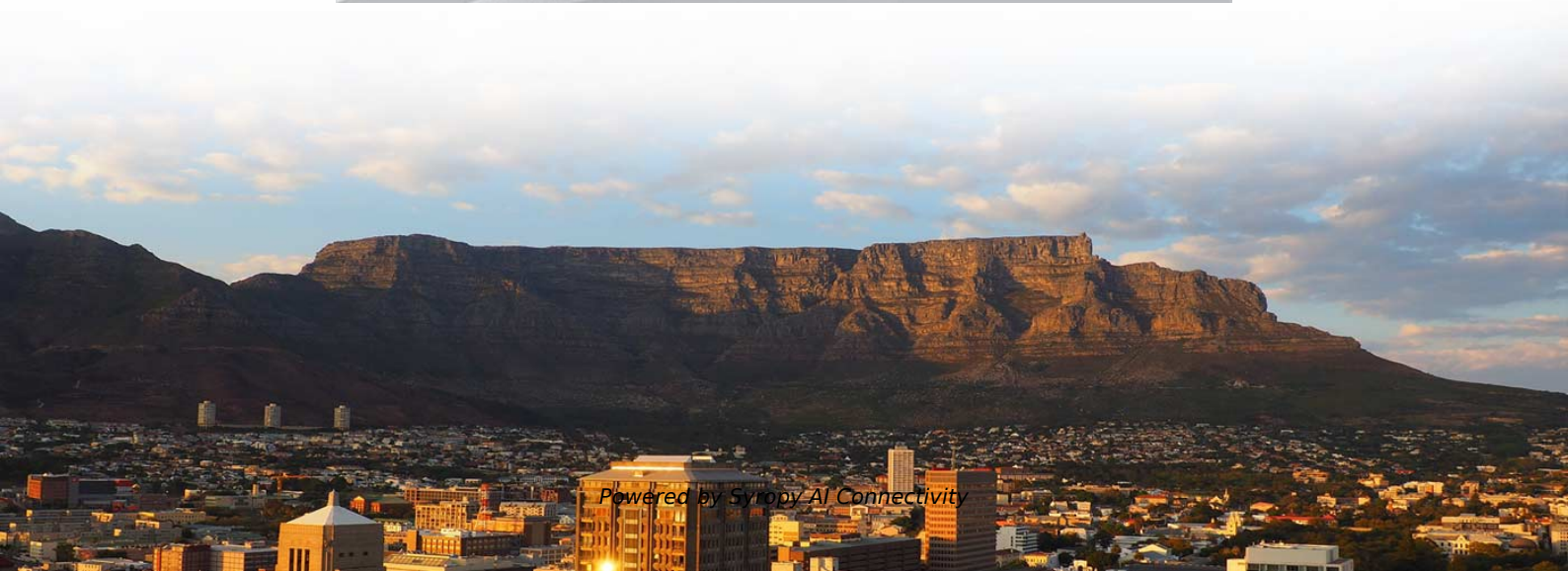


Norwegian ABS box-type PLC optical splitter





Norwegian ABS box-type PLC optical splitter



ABS Box PLC Splitter

ABS Box PLC Splitter Planar Lightwave Circuit (PLC) Splitter is a type of passive optical component using silica optical waveguide technology to distribute optical signals from Central Office (CO) to

PLC-A-164 1x64 ABS box module type fiber optic PLC

The 1x64 ABS box module type PLC Splitters have high performance, a wide wavelength range from 1260nm to 1650nm, and work in temperatures from -40°C



5-INCH COLOR TOUCHSCREEN

Intuitive operation, easily accessible with just one touch



ABS Box Type PLC Fiber Splitter -JPT Laser

ABS Box Type PLC Fiber Splitter Planar lightwave circuit (PLC) splitter is an integrated waveguide optical power distribution device based on quartz substrate. Like coaxial cable transmission system,

PLC Splitter

Overview Planar lightwave circuit (PLC) splitter is a type of optical power management device that is fabricated using silica optical waveguide technology. It features small size, high reliability, wide



PLC splitter ABS Box type - manufacturer of fiber optical

PLC splitter ABS Box type is most commonly used in the PON networks. It provides the complete protection for inner optical components and cable, as well as



ABS Box Type PLC Fiber Splitter -JPT Laser

Features low insertion loss with dependable optical performance, enhancing link quality and ensuring stable network operation. Provides good uniformity across split channels and low PDL, ensuring



ABS PLC Splitter Boxes , Fibertronics, Inc.

The Fibertronics PLC splitter family features the whole series of 1 x N and 2 x N splitter boxes and modules that are tailored for specific applications. All splitters provide excellent optical performance





ABS Box Type PLC Splitter , HYC Co., Ltd

The PLC optical splitter ABS box type not only available in a variety of split modes and package types, but also can be customized according to customer requirements.



ABS PLC Splitter

ABS PLC Splitter, or ABS PLC Fiber Splitter, in 1×2, 1×4, 1×32 type, Splice/Pigtailed ABS Module Box Type, 2.0mm, SC/APC, SC/UPC (1×128), Singlemode, Passive

1×8 PLC Fiber Splitter, ABS Box Module, 2.0mm, SC/APC, Singlemode

1×8 PLC Splitter ABS Box Type (Singlemode, 2.0mm, SC/APC, 1.5m In/Out Length) Planar lightwave circuit (PLC) splitter is a form of optical power management device that distributes or combines



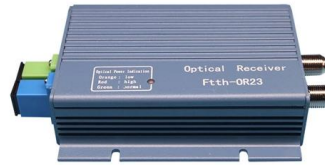
ABS Box PLC Splitters Types Prices & Technical

ABS Box PLC Splitters is most commonly used in the PON networks. It provides the complete protection for inner optical components and cable, as well as designed



Fiber 1×32 SC ABS Module Box optical PLC Splitter

Product Description We can product 1×32& 2×32 ABS box type PLC Splitter with connector and without connector. Springoptic offers a variety of ABS box and



ABS Box Type PLC Splitter

It is based on the planar waveguide technology, where a lightwave circuit is created on a small chip that splits the incoming optical signal into two or more output

ABS Box PLC Splitters Types Prices & Technical

What Is ABS Box PLC Splitters? ABS Box PLC Splitters is most commonly used in the PON networks. It provides the complete protection for inner optical



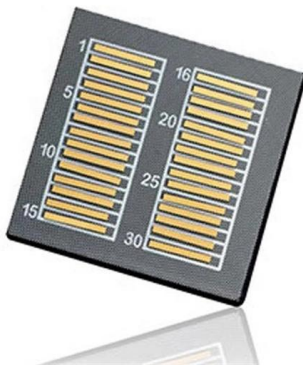
ABS Module PLC Fiber Splitter Datasheet , FS

PLC Fiber Splitter, ABS Box Type, Singlemode Overview Planar lightwave circuit (PLC) splitter is a type of optical power management device that is fabricated using silica optical waveguide technology to



Custom ABS Box Fiber Optic PLC Splitter Supplier, OEM Company

ABS Box Fiber Optic PLC Splitter is a passive optical device used to evenly split the input optical signal into multiple output signals or merge multiple signals into one. ABS Box is small in size,



ABS Box PLC Splitter

An ABS Box PLC Splitter is a passive optical device that divides an optical signal into multiple identical signals. It is based on planar lightwave circuit (PLC) technology

2x32 Single Mode ABS Box Fiber Optic PLC Splitter

The 2x32 ABS Box Type PLC Splitter, with its compact design and small footprint, is ideal for deployment in various locations, including 19-inch racks and cross



1x32 Fiber Optic PLC Splitter ABS Module SC/APC

Abalone offers a variety of box and cassette type splitter modules and products. This PLC Splitter Module is a plastic module called an ABS box with ruggedized fiber



ABS Box PLC Fiber Optic Splitter, Single-mode

Except ABS box PLC fiber optic splitter, FOCONEC has Steel tube PLC splitter, LGX cassette type PLC splitter module, rack mount patch panel type PLC splitter



ABS Module PLC Fiber Splitter Datasheet , FS

Planar lightwave circuit (PLC) splitter is a type of optical power management device that is fabricated using silica optical waveguide technology to distribute optical signals from Central Office (CO) to

ABS PLC Splitter 1x32 Optic Splitters SC APC Price

ABS PLC Splitter 1x32 Optic Splitters SC APC
Planar lightwave circuit (PLC) splitter is a type of optical power management device that is fabricated



PLC-A-108 1x8 ABS box module type fiber optic PLC

The 1x8 ABS box module type PLC Splitter devices have high performance, a wide wavelength range from 1260nm to 1650nm, working temperatures from -40°C to



ABS PLC Splitter 1x2-1x64 SC/APC for FTTH GPON Optical Network

ABS PLC Splitter with 1x2 to 1x64 split ratios for FTTH, GPON, XGS-PON, CATV, and passive optical networks. Low insertion loss, high reliability, SC/APC and SC/UPC connector options, OEM



Contact Us

For datasheets, pricing, or custom high-speed optical interconnect solutions, please visit:
<https://syropy.com.pl>