

# Optical module SMF





## Optical module SMF

---

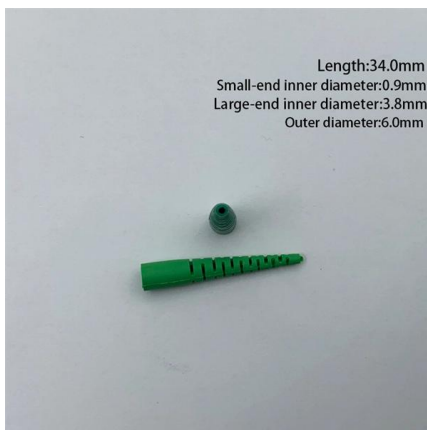


### Overview of 400G QSFP-DD Mid-Range Optical

These signals are multiplexed and coupled into a single-mode fiber (SMF) for transmission, with a maximum transmission distance of up to 10km via

### QSFP28 Optical Transceiver Modules for Sale (100G) , Cables on

Our QSFP28-SR Multi-Mode-Fiber (MMF) Optical Modules integrate a 12-lane MTP/MPO fiber receptacle (port) for 100G Ethernet links using industry-standard MTP/MPO fiber patch cords up to



### QSFP-DD Product Family » Acacia

Bright 400ZR+ QSFP-DD Pluggable Coherent Optical Module Metro/regional , Service provider ROADM networks Key Features High optical transmitter output

### 10 Gigabit Optical Transceivers , SFP+ and XFP

Perle 10 Gigabit Optical Transceivers are interchangeable, compact media connectors and enable a single network device to connect to a wide variety of



### Single-mode optical fiber

In fiber-optic communication, a single-mode optical fiber, also known as fundamental- or mono-mode, is an optical fiber designed to carry only a single mode of light



### Accessories 2.5G-SFP-LX03-SM1310-BIDI-I 2.5G BiDi SFP 1310nm

2.5G-SFP-LX03-SM1310-BIDI-I 2.5G BiDi SFP 1310nm-TX/1550nm-RX 3-km DOM Simplex LC SMF Transceiver Module Applicable to data center and campus networks, enabling cost-effective,



### What is Single-mode SFP Optical Module?

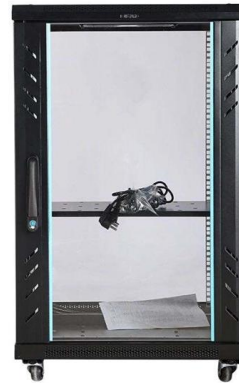
Discover the differences between Single-mode and Multimode SFP modules, including fiber types, transmission distances, and applications. Learn how to





## 100G QSFP28 DR Single Lambda Optical Transceiver Module

Product description 100G QSFP28 PAM4 Single Lambda DR Optical Transceiver (1310nm SMF 500m LC with FEC DDM) 100G QSFP28 DR Single Lambda is a transceiver module designed for 500m



## XG-SFP-LR-SM1310 10GBASE-LR SFP+ 1310-nm 10-km DOM

The XG-SFP-LR-SM1310 is aligned to IEEE 10GBASE-LR optical specifications and supports a link length of up to 10 kilometers over a single-mode fiber (SMF) with an LC connector.

## Optical Module-SMF and MMF

SMF is typically used for technologies which operate in the 1210nm and 1550 nm wavelengths, and has a core size of 9 microns. The following is a list of the



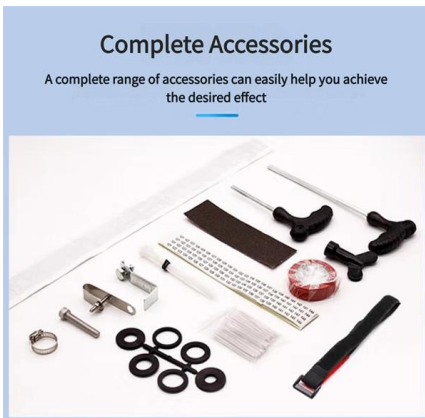
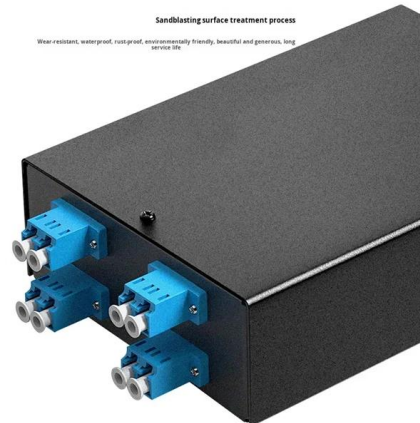
## 400G vs 800G Optical Module: Which is Right for Your Network?

A deep technical comparison of 400G vs 800G optical module technology. Understand the key differences, benefits, and applications to optimize your next-generation data center network.



### Cisco SFP Modules for Gigabit Ethernet Applications

This data sheet describes the benefits, specifications, and ordering information for the Cisco SFP Modules for Gigabit Ethernet Applications.



### Ciena CWDM-SFP10G-1490-40 Compatible 10GBASE-CWDM SFP+ 1490nm 40km SMF

Ciena CWDM-SFP10G-1490-40 compatible optical transceiver is a dual fiber 10.3Gbps Small Form-factor Pluggable SFP+ CWDM module for use in 10GBASE Ethernet. SFP+ CWDM1490-ER

### Optical Module-SMF and MMF

Simply put Single-mode fibre (SMF) can carry a single beam of light, while Multi-mode Fibre (MMF) can carry multiple beams of light (modes). This is because



### Choosing Between SMF and MMF Optical Transceivers

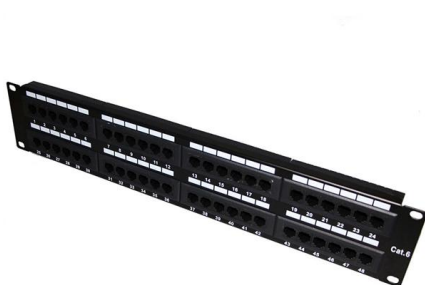
SMF Optical transceiver offers long-distance, high-speed links, while MMF suits short, cost-effective runs. Choose based on your network's needs.

### 100G Optical Transceiver, Optical



## Transceiver Module

The 100G LR1 SFP56-DD optical transceiver, 100G SFP56-DD LR1 is designed for using in 100-Gigabit Ethernet links up to 10km over Single-Mode Fiber (SMF). It is



## 10G SFP+ Transceivers - High-Performance Compatible Fiber Modules

10G SFP+ LINK-PP - Lan Transformer - Modular Jack Link-PP 10GbE SFP+ module solutions provide a wide variety of 10 Gigabit Ethernet connectivity options for data centers, enterprise wiring closets,

## 1G SFP Transceiver , Difference SMF vs. MMF

SMF SFPs use singlemode optical fiber with a 9-micron core and a 125-micron cladding. It typically transmits signals at 1310 nm and 1550 nm wavelengths. As a result, it works well for long



## F5 Networks F5-UPG-SFPLX-R Compatible 1000BASE-LX SFP 1310nm 10km SMF

F5 Networks F5-UPG-SFPLX-R compatible optical transceiver is a dual fiber 1000Mbps Small Form-factor Pluggable SFP module for use in 1000BASE Ethernet. SFP LX provides 1Gb/s throughput up



### 1000BASE-LX SFP 20km SMF Optical Transceiver Module

This transceiver module uses SMF to transmit data up to 2000 meters. This range is ideal for data center and enterprise campus applications with long connections.

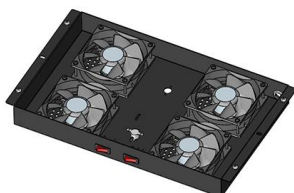


### The Ultimate Guide to SFP Modules (2026): Types,

Confused by SFP vs SFP+? Read the definitive 2026 guide on SFP modules. We explain Single Mode vs Multimode, DDM diagnostics, and how to choose the right

### 40Gb/s QSFP+ SMF Optical Transceiver

This module incorporates CWDM DFB lasers and high sensitivity PIN receivers providing superior performance for 40GbE Ethernet applications up to 10km links and is compliant to optical interface



### Choosing Between SMF and MMF Optical Transceivers

Single-Mode Fiber (SMF): Uses a tiny glass core (8-10 microns). It allows light to travel in a single, straight path with minimal reflection or modal



## Understanding the OSFP Standard: The Open 400G/800G Optical

What Is the OSFP Standard? OSFP (Octal Small Form Factor Pluggable) is a pluggable optical transceiver interface standard that supports eight electrical lanes (Tx/Rx) per module. Each

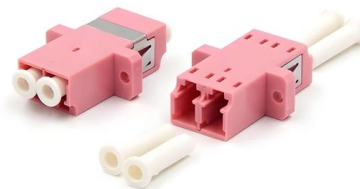


### 1.25G SFP BIDI Module Tx1490/Rx1550nm 80KM SMF DDM LC

1.25G SFP BIDI Tx1490/Rx1550nm 80KM SMF DDM LC CISCO JUNIPER HUAWEI COMPATIBLE SFP OPTICAL TRANSCEIVER MODULE The SFP-BIDI transceivers are high performance, cost

### 3G-SDI 1550nm 80km Digital Video SFP Optical

Optcore's OHP3G-5580DCR is a high-performance, cost-effective 3G-SDI optical transceiver module for long-reach broadcast video transmission applications over



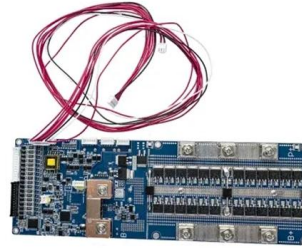
### Optical Modules Market Size, Growth Trends & Forecast

Access detailed insights on the Optical Modules Market, forecasted to rise from USD 3.5 billion in 2024 to USD 8.2 billion by 2033, at a CAGR of 10.3%.



## Single-Mode vs Multimode SFP Identification: 2026 Protocol

Identifying Single-Mode (SMF) vs. Multimode (MMF) SFP modules involves a cross-referencing protocol of physical bail colors, EEPROM telemetry, and wavelength specifications.



## 1.6T/800G/400G Transceivers|NADDOD

NADDOD transceiver solutions for 400G/800G/1.6T enable enterprise and data center operators to increase bandwidth and speed at a low cost.

## Contact Us

---

For datasheets, pricing, or custom high-speed optical interconnect solutions, please visit:  
<https://syropy.com.pl>