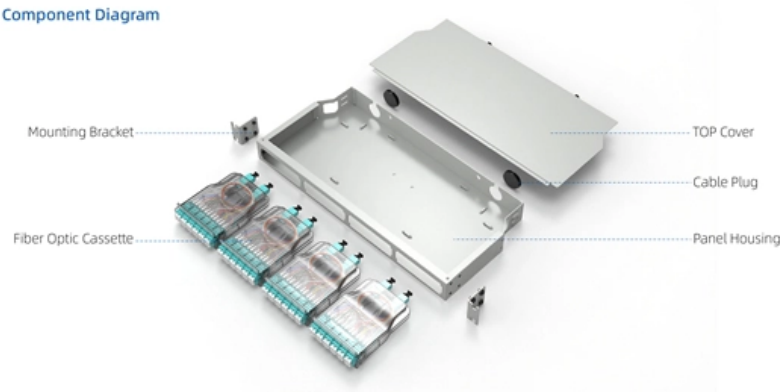
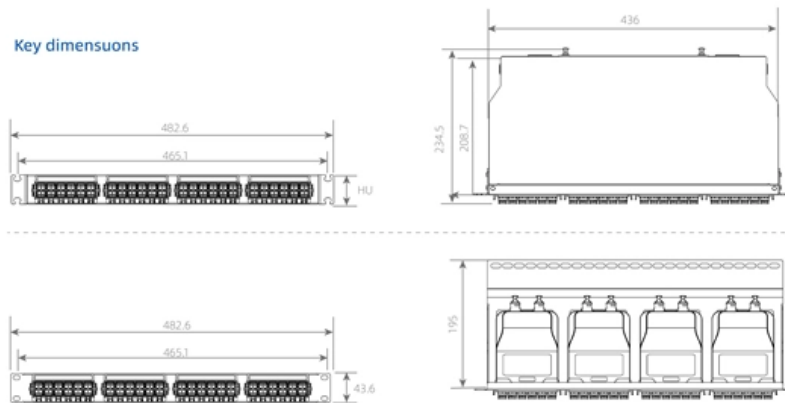


Optocoupler module pin functions

Component Diagram



Key dimensions





Overview

- Pin-2: The Cathode (-) pin is connected to the common ground with the circuit and power supply Phototransistor Output
- Pin-3: The Emitter pin is similar to the Cathode pin. These PC817 optocoupler isolation modules provide a convenient, pre-built breakout board that handles the supporting circuitry for you. In this pinout diagram of PC817, pin1 and pin2 are parts of the input side and pin3 – pin4 are output pins. INPUT_PULLUP means, the pin's signal is HIGH, if there is no connection to the GND pin (circuit).



Optocoupler module pin functions



How to Use Relay with optocoupler: Examples, Pinouts,

A relay with an optocoupler combines the functions of a relay and an optical isolator, allowing for the control of high voltage or high current circuits while providing

Application Examples

Figure 1 shows the internal pin connection of a 4 pin AC-input SFH620A-x optocoupler TCET1600, K814P series; and figure 2, of a 4 pin DC-input optocoupler TCET1100, SFH61xA-x, and K817P



PC817 Optocoupler Datasheet, Pinout, Circuits, Arduino

- o Pin-1: The Anode (+) pin inputs the logic signal to the internal IR.
- o Pin-2: The Cathode (-) pin is connected to the common ground with the circuit



PC817 Optocoupler: Pinout, Features, and Applications

Explore the PC817 optocoupler's pinout, working principle, and applications. Learn how it provides electrical isolation and signal transfer.



PC817 Optocoupler: Pinout, Features, Equivalent, and

Complete guide on the PC817 optocoupler including 180-word introduction, pinout, features, working, equivalents, and detailed applications for

PC817: Optocoupler (Optoisolator) Explained - Tricky

The PC817 is a phototransistor-based optocoupler (also called an optoisolator) used to provide electrical isolation between two circuits. It is widely used in signal



Transistor Output Optocouplers Frequently Asked Questions (FAQs)

It is a sensitive pin of the transistor which affects the CTR as well as the timing behavior of the optocoupler. The advantage of connecting the base pin is to speed up the turn-off time by creating an



Optocoupler Tutorial and Optocoupler Application

Optocoupler Tutorial Optocouplers, also known as opto-isolators, uses infrared light to transfer electrical signals between two electrically isolated



Interfacing PC817 4-Channel Optocoupler Module with

Each PC817 channel has 4 pins: Input pins: Output pins: You can see pinout of this module in the image below. There is a jumper for each channel. If

How Optocouplers Work

FREE COURSE!! Learn about optocouplers. We'll look at how they are used to control circuits, how they work and also how to design some simple



Understanding Phototransistor Optocouplers

Understanding Phototransistor Optocouplers Content you may also like An optocoupler, also known as photo-coupler or opto-isolator, is a component



PC817 Optocoupler : Pin Configuration, Circuit, Working

PC817 Optocoupler Pin Configuration The pin configuration of PC817 Optocoupler is shown below, This IC includes 4 pins like 2 input pins and 2 output pins where



PC817 Datasheet, Pinout, Circuits and Equivalent

PC817 pinout explained: pin 1 and 2 for LED input, pin 3 and 4 for phototransistor output. See datasheet, functions, circuits, and equivalents.

ANO007 , Understanding Phototransistor Optocouplers

A phototransistor optocoupler is formed by an infrared light emitter device (IR-LED) (Gallium Arsenide (GaAs)) and a light detector device (phototransistor), both optically coupled and typically



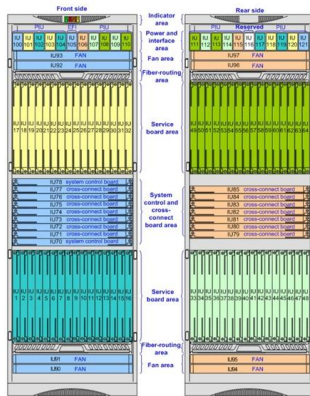
What is an Optocoupler, and how does it work

An optocoupler is an electronic device that interconnects two isolated electrical circuits using a light-sensitive optical interface.



Optocoupler: Its Types and Various Application in

Applications of Optocoupler As discussed before few Optocoupler used in DC circuit and few Optocoupler used in AC related operations. As the



Interfacing PC817 4-Channel Optocoupler Module with

PC817 Optocoupler Module Pinout Each PC817 channel has 4 pins: Input pins: IN: Input - 5 to 30 V GND: Ground Output pins: OUT: Phototransistor

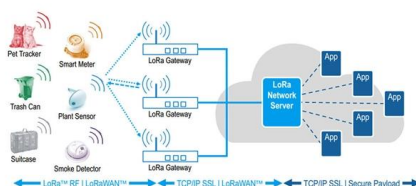
PC817 Optocoupler pinout, working and Example with Arduino

An optocoupler (or opto-isolator) is a component that transfer signals between circuits using light. In this guide, you'll learn how they work and how you



PC817 Optocoupler Module User Guide , Wiring & Setup

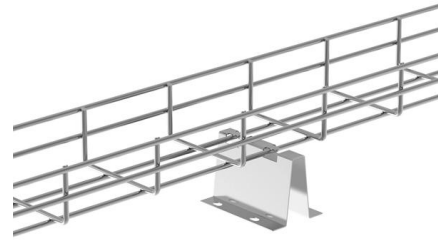
Complete PC817 optocoupler isolation module guide. Covers 3.6V-30V wiring, jumper settings, resistor selection, Arduino/ESP32/PLC hookup





The Ultimate Optocouplers Guide: Isolation, Types, and

Our complete optocouplers guide covers what they are, how they work, the different types, and key applications. Learn to select the right optoisolator.



PC817 Optocoupler: Working, Pinout, Circuit,

This article explains the working, pin configuration, circuit design, types, real-world applications, and a practical example of PC817 in detail. What is

ANO007 , Understanding Phototransistor Optocouplers

In order to design a functionally robust and reliable application with optocouplers, it is essential to understand not only the device's main parameters and parasitic elements, but also their tolerances



Arduino Tutorial: HY-M154 / 817 / PC817 Optocoupler Module

This tutorial gives an introduction to the HY-M154 / 817 optocoupler module. Moreover, a simple application is programmed



What Is Optocoupler and Its Application with Examples

Video: How an Optocoupler Works and Example Circuit II Photocouplers, Opto-couplers & Opto-isolators These devices are known by a



PC817 Optocoupler : Pin Configuration, Circuit Diagram

PC817 Optocoupler Pin Configuration The pin configuration of PC817 Optocoupler is shown below, This IC includes 4 pins 2 input pins, and 2 output

PC817 Optocoupler: Pinout, Specifications, Circuits and

The PC817 optocoupler is a fundamental component in electronic circuits, seamlessly integrating an infrared emitting diode (IR LED) and a



Introduction of Optocouplers

Opto-couplers, with light emitting and light sensitive devices- MOC3020, MOC3021, MCT2E, MOC363 explained with pin descriptions, features and applications.



PC817: Optocoupler (Optoisolator) Explained - Tricky

How it works: Pins 1 & 2 -> Control the LED inside the optocoupler. Pins 3 & 4 -> The phototransistor switches ON/OFF based on the LED state.



Contact Us

For datasheets, pricing, or custom high-speed optical interconnect solutions, please visit:
<https://syropy.com.pl>