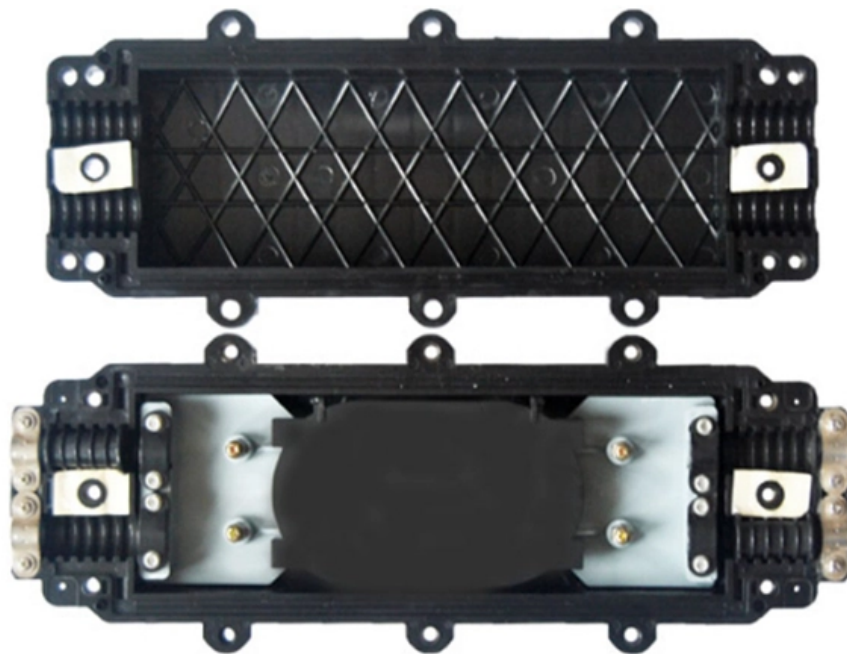


# **Performance Comparison of Waterproof Junction Box with 850nm and Latency**





## Performance Comparison of Waterproof Junction Box with 850nm ar

---

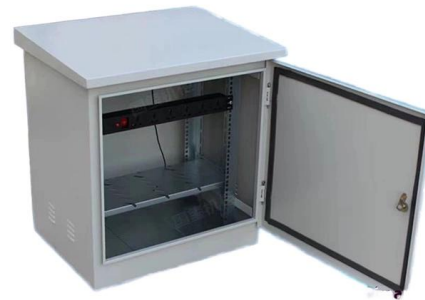


### Reliability Report V25-850 VCSEL \_short version\_

This report summarizes the results of more than three years of reliability studies of 850nm VCSELs produced by VI Systems GmbH to meet performance requirements for direct modulation speeds of

### Waterproof Junction Box Guide: Types, Specifications & How to Choose

There are many types of waterproof junction boxes on the market, but they can be roughly understood from four perspectives: what materials they are made of, their IP protection



### DIY Parametric Waterproof Junction Box : r/functionalprint

I was working on a project yesterday and needed a junction box to house some electrical components. I went to my local hardware store, but they didn't have anything that quite fit my needs. So, I came

### Creating Connections for Life , Molex

Hier sollte eine Beschreibung angezeigt werden, diese Seite lässt dies jedoch nicht zu.



### Performance and Latency Efficiency Evaluation of

In high-performance computing, distributed workloads require extensive data processing, and simulations require higher bandwidth and minimal



### A Complete Guide to Purchasing Waterproof Junction

Degree of Waterproofing: Different waterproof junction boxes offer varying levels of protection against water ingress. Look for boxes with a high IP (Ingress



PRODUCT CATEGORY				
Open rack Series	2-post server rack	12U 4-post open rack	18" Open Wall rack	Adjustable Depth Open rack
Wall mount rack Series	Glass door Wall mount rack	Mesh door Wall mount rack	Double section Wall mount rack	Economic type Wall mount rack
Floor standing server rack	Glass door with casters	Mesh door with casters	42U Standard Server rack	Double open door Server rack
Outdoor cabinet	air conditioner Outdoor cabinet	Outdoor cabinet with plinth	Outdoor cabinet with fan cooling	Double Wall Outdoor cabinet
Splitter series	Bare Fiber Splitters	Blackless Fiber Splitters	ABS Splitter	Plastic Splitters
Splitter series	LOK Splitters	Rack Mount Splitters	Mini Plug-in Type Splitter	Tray Splitters
Patch cord series	LC	SC	FC	LC
FTTH product series				

### water proof junction box

A water proof junction box keeps wiring safe from rain, splashes, and humidity. It's a must for any space where moisture could damage connections. Core Waterproof Features IP66/IP67



## A Comprehensive Guide to Waterproof Junction Boxes:

Waterproof junction boxes are essential components in any electrical system exposed to harsh environmental conditions. These enclosures protect



### how-to-choose-the-best-waterproof-junction-box-for-your-needs

A waterproof junction box protects electrical connections from moisture, dust, and other elements. In this guide, we'll help you make an informed decision on choosing the best waterproof

### Benchmarking latency across common wireless links for

Benchmarking latency across common wireless links for microcontrollers Scott I was recently trying to quantify the tradeoffs in user-experience for a wireless product



### Waterproof junction box, Watertight junction box

Find your waterproof junction box easily amongst the 293 products from the leading brands (Fongkit, TAKACHI, SENSY, ) on DirectIndustry, the industry specialist



## Junction Box Waterproof Aluminum Enclosure Why

Discover how a junction box waterproof aluminum enclosure protects electronics from water, dust, and impact in outdoor and industrial use.

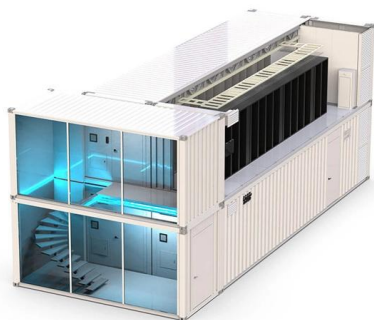
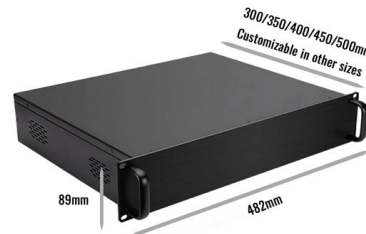


## Guide to Choosing the Perfect Waterproof Junction Box

Evaluate the durability of materials used in waterproof junction boxes, such as plastic, fiberglass, or metal alloys, ensuring they can withstand exposure to water

## (PDF) Recent Advances in 850 nm VCSELs for High

Finally, we elucidate the latest developments and vital features of modern 850 nm VCSELs for high-speed interconnects. Schematic top view of an



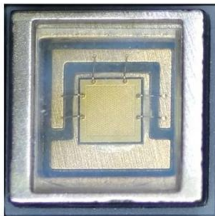
## Amazon : Outdoor Waterproof Junction Box

Explore electrical junction boxes with multiple cable entry options. Durable construction for long-lasting performance.



### Low-Latency Boolean Functions and Bijective S-boxes

Then, we present another algorithm to build bijective S-boxes with low-latency complexity which with respect to the computation cost, this algorithm



### A Comprehensive Guide to Waterproof Junction Boxes: Types,

Waterproof junction boxes are essential components in any electrical system exposed to harsh environmental conditions. These enclosures protect electrical connections from moisture, dust, and

### Key Considerations For Waterproof Junction Box Selection: A

There is no one-size-fits-all formula for choosing outdoor weatherproof box, but by comparing it one by one from four dimensions--IP rating verification, material compatibility, sealing



### weather proof junction box

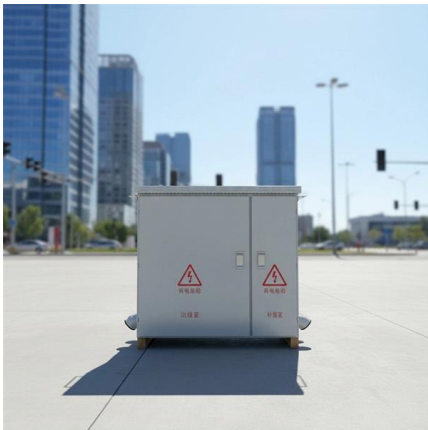
A weather proof junction box stands up to rain, snow, UV rays, and temperature swings. It's built to protect wiring in any outdoor or exposed indoor space. What Makes It Weatherproof





## how-to-choose-the-best-waterproof-junction-box-for-your-needs

Choosing the right waterproof junction box ensures your electrical installations are protected from the elements, enhancing safety and performance. Whether for outdoor, industrial, or



### Waterproof junction boxes

Waterproof junction boxes find applications in various industries and environments, including outdoor lighting, irrigation systems, industrial machinery, marine and boating equipment, renewable energy

### Waterproof Junction Box: Ultimate Protection Systems

Waterproof Junction Box guide: Learn about IP ratings, material durability, and EPCOM's advanced sealing solutions for maximum outdoor



### Waterproof Junction Enclosures vs. Standard Boxes: Why Durability

Waterproof junction enclosures and standard boxes both serve to protect internal components, but their durability, environmental resistance, and applications set them apart. Here's



### waterproof electrical junction box

A waterproof electrical junction box guards wire connections in damp areas. It blocks rain, splashes, and humidity. Lemotech builds these boxes to

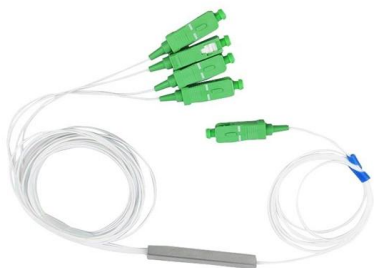


### Aluminum Junction Box Waterproof vs Plastic: Which

Compare aluminum junction box waterproof with plastic enclosures to decide which is best for durability, heat dissipation, and outdoor use.

### Sentry CCTV IP65 Waterproof Junction Box 85x85x50

Description Sentry CCTV IP65 Waterproof Junction Box 85x85x50 mm - ABS Square Electrical Enclosure Terminal Box with Cable Glands Indoor & Outdoor



### IP68 Electrical Enclosures and Junction Boxes: What They Are and

Learn what IP68 means for electrical enclosures and junction boxes, including waterproof performance, applications, and when IP68 protection is required.



### A further study on bridge structures and constructing bijective S-boxes

Our results not only provide enough 8-bit structural S-boxes with the optimal cryptographic properties and the lightest cost but also lead to a better understanding of the bridge, Feistel and



### High-speed Optical Interconnects in harsh environments

In contrast, the unequal QW VCSEL maintains its performance, achieving error-free transmission at 23 Gbps and 21 Gbps with sensitivities of -5.9 dBm and -7.2 dBm, respectively.

### Waterproof Enclosures and Weatherproof Junction Boxes

Waterproof enclosures ensure internal electrical and electronic components are protected in any environment. Durability guaranteed, waterproof boxes and



### Watertight Junction Box, IP67 Waterproof Project Box

Durable junction box can offer well protection for your projects in outdoor. Easy to Use: The electrical junction box is easy to operate and repair, no cable cutting,





## Contact Us

---

For datasheets, pricing, or custom high-speed optical interconnect solutions, please visit:

<https://syropy.com.pl>