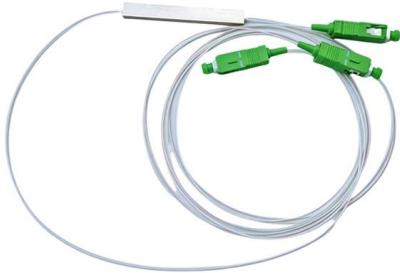


Price of light-sensing delay module





Price of light-sensing delay module



ITPro Today, Network Computing, IoT World Today combine

ITPro Today, Network Computing and IoT World Today have combined with TechTarget . The page you are looking for may no longer exist.

Time Delay Relay Controller

Max. output load: able to control device within DC 30V 5A or AC 220V 5A. 1. PARAMETER --- operating voltage range DC 6-30V, support



DFRobot Mmwave

Features adjustable sensing distance and sensitivity Supports UART and GPIO output for versatile use Ideal for projects like smart light control and home security

PIR Motion Detector , Sensitivity+Daylight+Delay

This passive infra red (PIR) motion detector circuit uses a PIR sensing element,



CP Electronics Compact PIR Presence Detector Lux

Compact PIR detectors provide automatic control for lighting, heating and ventilation loads. The PIR sensor can be mounted either flush into a ceiling tile or using a



Choosing The Right Time Delay Modules

Get to know different kinds of time delay modules. Know the differences between 555 and custom IC based time delay modules and driving



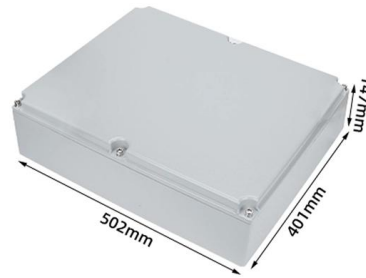
Light Sensing Module

Sunrom Electronic components distributor with huge selection in stock and ready to ship same day with no minimum orders. New electronic parts added frequently.



Light Sensors , Wall Mounted Light Control Sensors & Detectors , RS

Phototransistors: Highly sensitive and versatile, often used in systems that require light amplification. Photoresistors (LDRs): Simple, cost-effective light sensors that vary resistance in response to light



Amazon : Solu DC 12V Light Sensor Switch

Buy Solu DC 12V Light Sensor Switch Photosensitive Resistance Relay Module with Cable DC 12V Stable Car LED Headlight Automatic Light Control Circuit

AshwinD24's gists · GitHub

GitHub Gist: star and fork AshwinD24's gists by creating an account on GitHub.



KKmoon 12V 0-10A DC Current Detection Module Current Sensing

UPC 602105489621 KKmoon 12V 0-10A DC Current Detection Module Current Sensing Detecting Delay Relay Control (2 variations) info, barcode, images, GTIN registration & where to buy online.



BuyWeek Photoresistor Relay Module, Light Sensing Sensor Light Sensing

Setting the delay potentiometer clockwise will extend the delay time. When adjusting the sensitivity, you need to set the delay time to the shortest delay time of about 1 second (counterclockwise adjustment)



Light Sensing Module

Light Sensing Module - LDR Sunrom Product Code for Ordering: 4589 Specifications Operating Voltage: 3.3V to 5V DC Operating Current: 15ma Output Digital - 0V to

DC 36V to 12V Microwave Radar Sensor Module

Experience advanced sensing with the DC 36V to 12V Microwave Radar Sensor Module. This versatile module features adjustable parameters, including delay



Lighting Sensors & Timers: Motion, Light & Humidity

Automate lighting to manage electrical costs effectively. Our sensors and timers offer diverse mounting and programmable options for efficient control.



SENSKY BS010WL DC 12v to 24v Mini Pir



About this item ?Motion Activated? : Sensor function triggered by motion, you can use this small motion sensor switch to control lighting like Led strip lighting.

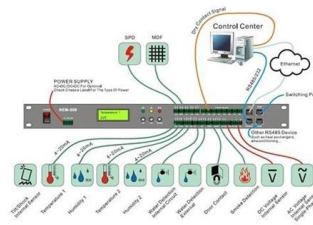


LDR Module With Relay

Description Instructions: 1. photoresistors module is most sensitive to ambient light, generally used to detect the brightness of the ambient light. 2. when the ambient

IDUINO DC 12V LED Digital Time Delay Relay Module Programmable

The digital interface enables easy programming and adjustment of delay times, ensuring flexibility in your projects. Whether you need to control appliances, machinery, or lighting systems, this time



LDR Light Sensor Module for Arduino

LDR Light Sensor Module for Arduino - Analog & Digital Output The LDR Light Sensor Module is an essential component for detecting ambient light. It

Light Sensitive LDR Relay Module 5V



The Light Sensitive LDR Relay Module 5V can automatically control a load such as a night security light based on the ambient light level.



Light Sensors , Wall Mounted Light Control Sensors & Detectors , RS

We supply OEMs, integrators, and engineers who expect precision. Whether you need a standard light sensor or a custom optical module, our team can help you get exactly what your system requires.

Light Sensitive Relay Module 5V

The Light Sensitive Relay Module 5V can automatically control a load such as a night security light based on the ambient light level.



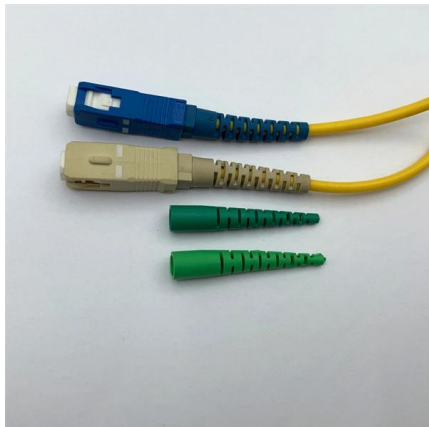
XH-M131 DC Light Control Switch Photoresistor Relay

XH-M131 DC Light Control Switch Photoresistor Relay Module (12V) offers a simple yet effective solution for creating automatic lighting systems and darkness



5.8G radar sensing module human movement sensor

Product Introduction HLK-LD021 is a motion sensing module designed based on an X-band radar chip, with a center frequency of 5.8GHz. This module design



Lighting Sensors & Controls for Home & Business

Adjustable PIR Infrared Ray Motion Sensor with 16-360 seconds delay time. Ideal for home light control, sensing range up to 8m. Shop now for energy efficiency!, Alibaba .

XH-M131 Light Control Switch DC 5V Photoresistor

XH-M131 DC 5V Light Control Switch Photoresistor Relay Module Detection Sensor 10A brightness Automatic Control Module Input: DC 5V Load



3-Pack Motion Sensor Light Switch, PIR Infrared

3-Pack Motion Sensor Light Switch, PIR Infrared Sensor, 30S Time Delay, Smart Detection for LED, Bulb and Other Existing Light, Ceiling & Wall Mount,



Infrared Motion - Module Pir Detector for 8m Strip Lights

Infrared Motion - Module Pir Detector for 8m Strip Lights Sensor 3v-24v Dc Input 120° Sensing Ir Led Range 30s Delay Technology Pyroelectric off Angle (Probe bend)



Contact Us

For datasheets, pricing, or custom high-speed optical interconnect solutions, please visit:
<https://syropy.com.pl>