

Relay Protection Priority Principle





Overview

Relay coordination refers to setting protective devices so that the relay closest to the fault operates first, while upstream relays act as backups.

IEEE/IAS/I&CPSD Protection & Coordination WG Chair Jacobs Canada, Calgary, AB rasheek.com IEEE Southern Alberta Section PES/IAS Joint Chapter

Technical Seminar - November 2016 Protective Relays - Technical Seminar

Nov 2016 - Copyright: IEEE 2 Abstract: Protective relays and devices. Relay

coordination is one of the most critical aspects of electrical power system

protection. : 4 The first protective relays were electromagnetic devices,

relying on coils operating on moving parts to provide detection of abnormal operating conditions such as.



Relay Protection Priority Principle



Fundamentals of Power System Protection

This chapter aims to provide the reader why power system protection is so important. It examines open & short circuit faults, shows different protection zones, explains the

Relays , Power System Protection 1: Principles and components

A protective relay is a relay which responds to abnormal conditions in an electrical power system, to control a circuit-breaker so as to isolate the faulty section of the system, with the minimum



Distribution Automation Handbook

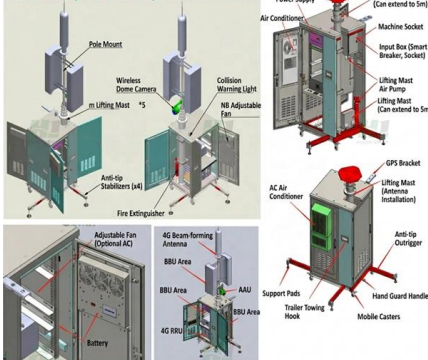
A straightforward way of obtaining selective protection is to use time grading. The principle is to grade the operating times of the relays in such a way that the relay closest to the fault spot operates first.

Protective Relaying Philosophy and Design Guidelines

Protection systems are only one of several factors governing power system performance under specified operating and fault conditions. Accordingly, the design of such protection systems must be clearly



Product Composition Description



Basic Theories of Power System Relay Protection

Relay protection with good performance should meet the requirements of reliability, selectivity, speed and sensitivity. In order to meet the requirements of a complex network, relay

What is a Protective Relay? Principle, Advantages,

A protective relay is an electrical component that is designed to trip a circuit breaker when a fault is encountered or identified.



doi: 10.1007/978-3-319-20919-7_3

Perform power system simulations of selected faults and observe how a given protection principle (overcurrent, impedance, and differential) works. Set the relays for a given power system. Verify by

Relay Coordination and Settings for Power Systems Protection



Discover robust relay coordination strategies for Power Systems Protection Engineers using advanced BI insights and DataCalculus.

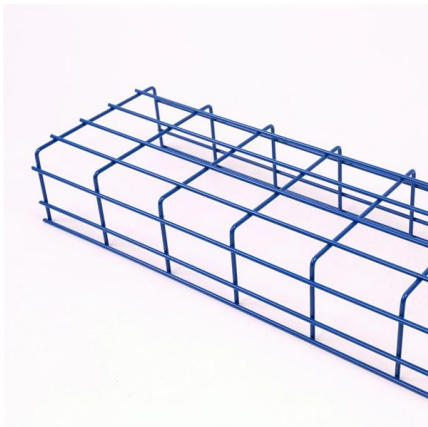
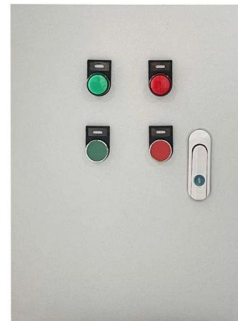


7 Core Concepts on Relay Coordination Basics: A

The 'Whats' and 'Whys' of power system protection. An overview of power system protection with focus on relay coordination basics - principles and objectives.

The Principles of Power System Protection

Principles of Power System Protection There are different principles used in accomplishing power system protection, we have discussed them in the



Principles and Characteristics of Distance Protection

Principles of Distance Relays Since the impedance of a transmission line is proportional to its length, for distance measurement it is appropriate to use



Societal and technology trend report

The crisis of traditional relay protection: A disruption of the technological paradigm Using the high short-circuit currents and system inertia provided by synchronous generators, traditional relay protection



Types of Electrical Protection Relays or Protective Relays

Primary relay or primary protection relay is the first line of power system protection whereas backup relay is operated only when primary

Protective Relay Basics

The objective of this presentation is to convey a basic understanding of protective relays to an audience of engineers already familiar with low voltage protective device coordination.



Basic Principles of Relay Protection

Basic Principles of Relay Protection Relay protection is a vital aspect of electrical power systems that ensures the safety and integrity of the network,



Fundamentals of Relay Protection Design

Relay protection is a crucial aspect of electrical power network transmission and distribution systems, ensuring the safety and reliability of the overall network. Designing an effective

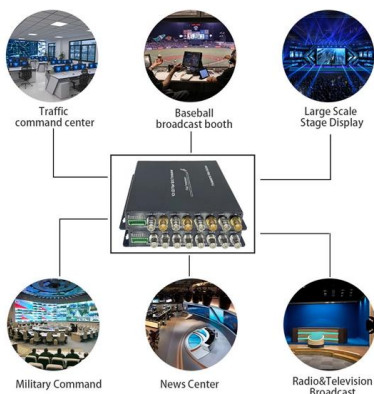


Protective relay

Distance relays, also known as impedance relay, differ in principle from other forms of protection in that their performance is not governed by the magnitude of the

The Role of Protection Relays in Power Systems and an

This paper introduces the concept of relay protection of hidden faults, its characteristics, and then analyzes the detection, risk and the calculation method of the relay protection of



Protective Relay: Working, Types, and Applications

Learn about protective relays, their working principle, types, and applications in power systems. Discover how relays protect transformers,



Principles of Protective Relaying , PDF , Electric Power

This document discusses protective relaying principles and philosophies. It begins by defining protective relaying as the branch of electric power engineering

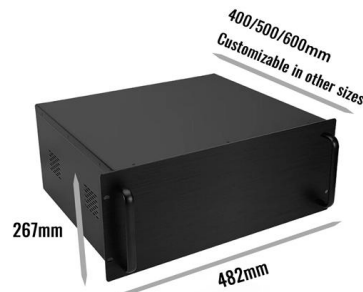


Relay Coordination Principles , Delgado Relay Protection Reference

Relay Coordination Principles: Ensuring Reliable Protection in Power Networks Relay coordination is a critical aspect of power system protection that aims to ensure the reliable operation

Basics of Protective Relaying and Design Principles

Perform power system simulations of selected faults and observe how a given protection principle (overcurrent, impedance, and differential) works. Set the relays for a given power system. Verify by



Power System Protective Relays: Principles & Practices

Abstract: Protective relays and devices have been developed over 100 years ago to provide "last line" of defense for the electrical systems. They are intended to quickly identify a fault and isolate it so the



Protective Relay Basics

Traditionally, protective relays were electromechanical devices utilizing induction disk, coils, contacts, and solenoid elements to determine protective characteristics.



What are Protective Relays?

Protective relays work as a sensing device, they sense the fault, then determine its position and finally, they give the tripping command to the circuit breaker. The circuit

UNIT 1 PROTECTIVE RELAYS

PROTECTIVE RELAYS PROTECTIVE RELAYING
Requirement of Protective Relaying Zones of protection, primary and backup protection
Essential qualities of Protective Relaying
Classification of



Basic protection relay knowledge

A fast and selective arc fault mitigation for air-insulated LV & MV switchgear and Relion protection and control relays and sensor technology protect staff and plant facilities for many years.



IEC Standard for Relay Coordination - Complete Guide

Relay coordination refers to setting protective devices so that the relay closest to the fault operates first, while upstream relays act as backups. The goal



Contact Us

For datasheets, pricing, or custom high-speed optical interconnect solutions,
please visit:
<https://syropy.com.pl>