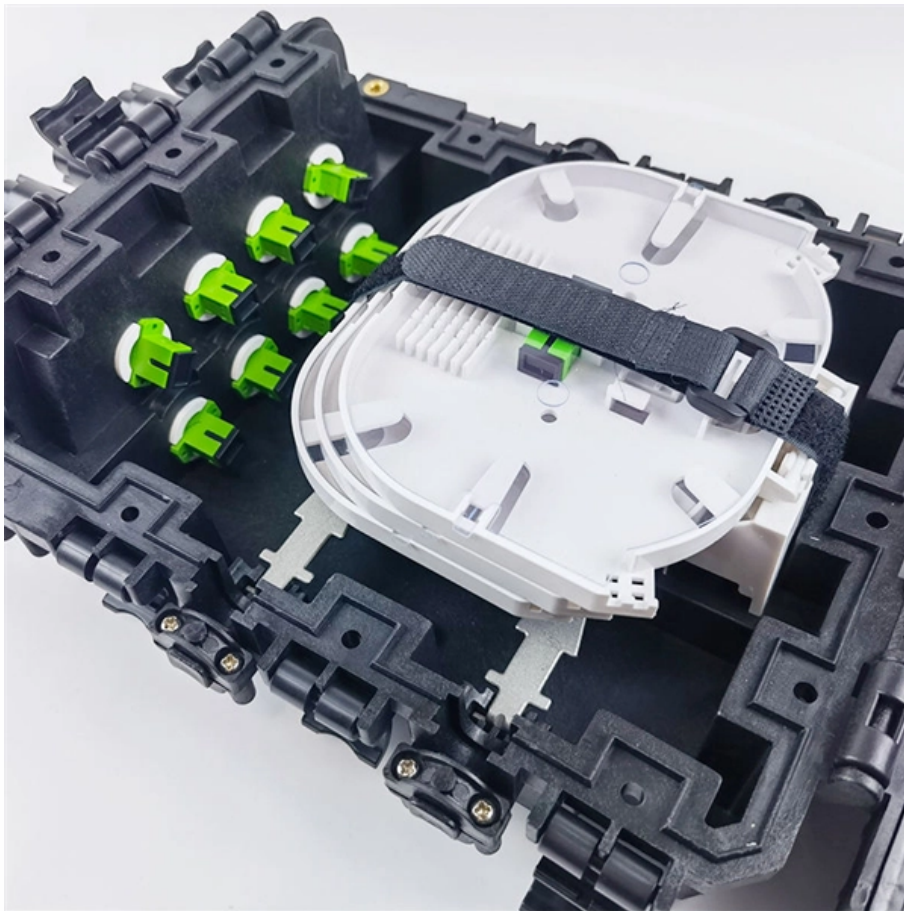


Relay protection complies with



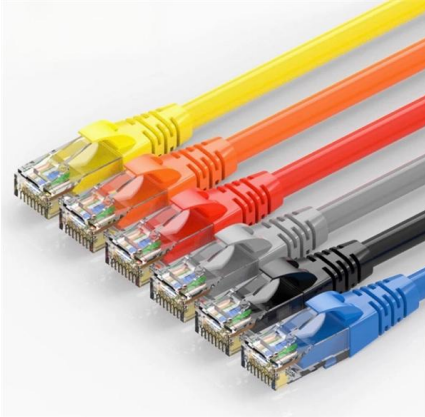


Overview

The first protective relays were electromagnetic devices, relying on coils operating on moving parts to provide detection of abnormal operating conditions such as over-current,, reverse flow, over-frequency, and under-frequency. The scope of TC 95 is the standardisation of measuring relays, protection equipment, and protection functions embedded in any equipment or systems used in various fields of electrical engineering covered by the IEC, including combinations of devices and functions that form schemes. Selectivity is a mandatory requirement for all protection, but the importance of it depends on the application. For example, unselective protection operation during a medium voltage network fault will cause an outage for an unnecessarily large number of consumers.



Relay protection complies with



IEC 60255 1xx: Protection relay functional standards for all

The aim is to help users in evaluating protection functions on a standardised basis with respect to relay selection, setting, commissioning, application, and operation. Relay standards

Basic protection relay knowledge

On the other hand, unselective protection operation in the extra high voltage network - i.e. at the national grid level- may endanger the stability of the whole power system, possibly leading to a



Protective Relaying Principles and Applications

The article provides an overview of protective relaying principles and their applications for high-voltage power system components.



Operation, maintenance, and field test procedures for

Operation, maintenance, and field test procedures for protective relays and associated circuits (photo credit: Omicron) The protection circuits



(PDF) IEC 60255 1xx: Protection relay functional

The new protection relay functional standards are designated as the IEC 60255-1xx series. The standardisation of various test methodologies and



Protection Relay : Circuit, Working, Types, Codes & Its

The protection relay ANSI codes within the design of the power system indicate what features a protecting device supports like a circuit breaker or relay.



Protective relay

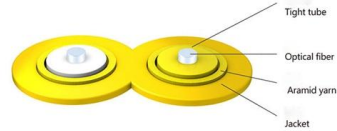
Overview
Operation principles
Types according to construction
Relays by functions
Power source

In electrical engineering, a protective relay is a relay device designed to trip a circuit breaker when a fault is detected. The first protective relays were electromagnetic devices, relying on coils operating on moving parts to provide detection of abnormal operating conditions such as over-current, overvoltage, reverse power flow, over-frequency, and under-frequency.



What is Protection Relay?

A protection relay is a crucial component of electrical systems that safeguard infrastructure, employees, and equipment from electric problems and



Cable structure

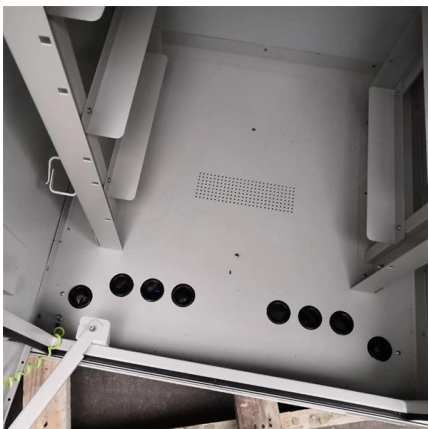


Installing and Maintaining Protective Relay Systems

Introduction Relay systems protect high-voltage equipment and transmission lines to ensure safe, stable systems. Although failure of a protective relay system may have severe local or regional impacts,

Standards for Motor Protection , Delgado Relay Protection Reference

The backup relay's time delay should be longer than the operating time of the motor relay to allow it to operate first in the event of a fault beyond the motor. In conclusion, standards for



The basics of power system protection that every

Introduction to relay protection Protection is the branch of electric power engineering concerned with the principles of design and operation of

Types of Electrical Protection Relays or



Protective Relays

? Key learnings: Protective Relay Definition: A protective relay is an automatic device that senses abnormal conditions in electrical circuits and



Section G2: Protection and Control Requirements for Transmission

Purpose This section specifies the requirements for protective relays and control devices for Generation Entities interconnecting to the PG& E Power System.

Protective Relay: Working, Types, and Applications

Learn about protective relays, their working principle, types, and applications in power systems. Discover how relays protect transformers,



Types of Electrical Protection Relays or Protective Relays

Protective relays can be categorized based on their operating mechanisms into electromagnetic relay, static, and mechanical types.



BS EN IEC 60255-27:2025 Measuring relays and

BS EN IEC 60255-27:2025 This standard BS EN IEC 60255-27:2025 Measuring relays and protection equipment is classified in these ICS categories: 29.120.70



Types of Protection Relays and Testing procedures

Regular testing and maintenance of protection relays are essential to verify their proper operation, detect faults, and mitigate risks. By conducting

UNIT 1 PROTECTIVE RELAYS

PROTECTIVE RELAYS PROTECTIVE RELAYING Requirement of Protective Relaying Zones of protection, primary and backup protection Essential qualities of Protective Relaying Classification of



Safety Standards , OMRON Device & Module Solutions

International electrical relay safety standards & information Basics Technology Applications Standards Glossary Relay Glossary Search by alphabetical index



Relay control and protection guides

Protection Relays The relay is a well known and widely used component. Applications range from classic panel built control systems to modern



Power System Protective Relays: Principles & Practices

Protective relays and devices have been developed over 100 years ago to provide "lastline" of defense for the electrical systems. They are intended to quickly identify a fault and isolate it so the balance of

What's a protective relay and what does it protect?

This FAQ contrasts and compares traditional electrotechnical and solid state protective relays, looks at how layers of protective relays are used to



IEEE Power Systems Relays Standards Collection: VuSpec™

This VuSpec includes 47 active IEEE standards, guides, recommended practices in the Power Systems Relays family. Power System Relays Standards concentrate on the application, design, construction



Protective Relay Basics

Traditionally, protective relays were electromechanical devices utilizing induction disk, coils, contacts, and solenoid elements to determine protective characteristics.

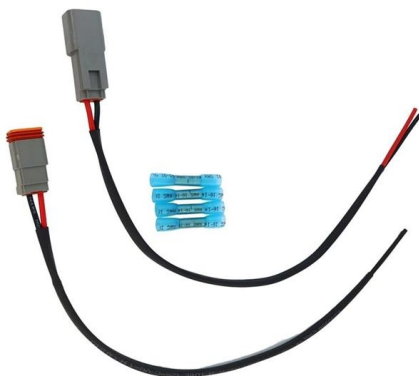


IEC 60255 1xx: Protection relay functional standards for all

The International Electrotechnical Commission (IEC) is currently working on a new series of standards that covers the functional requirements of measuring relays

Basic protection relay knowledge

A fast and selective arc fault mitigation for air-insulated LV & MV switchgear and Relion protection and control relays and sensor technology protect staff and plant facilities for many years.



doi: 10.1007/978-3-319-20919-7_3

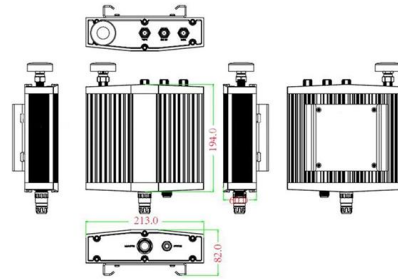
Impedance relays are used whenever overcurrent relays do not provide adequate protection. This section provides exercises about how to use impedance (distance) relays to protect a power network.



Practical handbook for relay protection engineers , EEP

Also principles of various protective relays and schemes including special protection schemes like differential, restricted, directional and distance

Mechanical drawing



IEEE Guide for Protective Relay Applications to Transmission Lines

IEEE-SA Standards Board Abstract: Information on the concepts of protection of ac transmission lines is presented in this guide. Applications of the concepts to accepted transmission line-protection

Protection Relay Testing and Commissioning

The testing and verification of protection devices and arrangements introduces a number of issues. This happens because the main function of protection devices is related to operation under fault



Contact Us

For datasheets, pricing, or custom high-speed optical interconnect solutions, please visit:
<https://syropy.com.pl>