

# Requirements for Low-Voltage Primary Distribution Boxes in Romania





## Requirements for Low-Voltage Primary Distribution Boxes in Romania

---



### ptb\_AFSEC\_low\_voltage\_en\_lay4

Acknowledgements This AFSEC Technical guidelines for Low Voltage Electrical Installations was developed by the AFSEC Technical Committee 64 with the support of AFSEC Secretariat; PTB

### Wiley Online Library , Scientific research articles, journals, books

Hier sollte eine Beschreibung angezeigt werden, diese Seite lässt dies jedoch nicht zu.



### Connection to the LV utility distribution network

Low-voltage consumers In Europe, the transition period on the voltage tolerance to "230V/400V + 10% / - 10%" has been extended for another 5 years up to the year 2008. Low-voltage consumers are, by



### ROMÂNIA

In Romania, the Competent Authority responsible for the preparation and implementation of the Risk Preparedness Plan (RPP) is the Ministry of Energy (ME) through the Directorate for Prevention and



### **Installation requirements for distribution boxes**

Distribution boxes shall be made of non-combustible materials; open distribution boards may be installed in production places and offices with low electric shock risk; enclosed cabinets shall



### **Extract from LV 10 · 10/2018**

For low-voltage switchboards and distribution boards: selection of the required protection devices and switching devices per system. The most suitable distribution system is determined automatically



### **Power Distribution Systems Romania , Production Power Equipment**

Power distribution systems safely route electrical current from generators or mains sources to lighting, camera, and production equipment across a set. Professional distro boxes, cable runs, and breaker





## IEC 61439 Standard Explained: Low Voltage Distribution Box

Low voltage distribution boxes are the silent guardians of modern infrastructure - hidden behind walls and in utility rooms, orchestrating power flow with Swiss-watch precision.

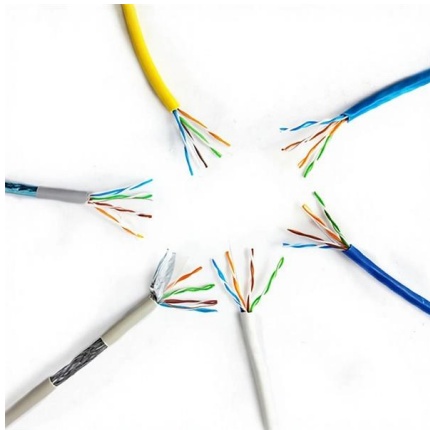


## Romanian Energy System Analysis (Production,

Furthermore, this paper explores the possibility for the energy producer to adapt to consumer demand to reduce electricity imports, strategic

## Voltage Standards And Material Requirements for Distribution Boxes

The American standard (UL) is compatible with low-voltage systems, emphasizing fire resistance and impact resistance. The plastic casing has strict flame retardant grades, and the grounding and



## GUIDELINES ON THE APPLICATION OF DIRECTIVE 2006/95/EC

In order to best ensure the objectives of both directives, existing harmonised standards (as published under the "Low Voltage" Directive) are being examined in order to ensure that they are also



## TECHNICAL GUIDELINES FOR LOW VOLTAGE ELECTRICAL

8 Technical Guidelines For Low Voltage Electrical Installation 1 Scope This Technical Guidelines for Low Voltage Electrical Installations is to provide electrical technicians, engineers and many others with

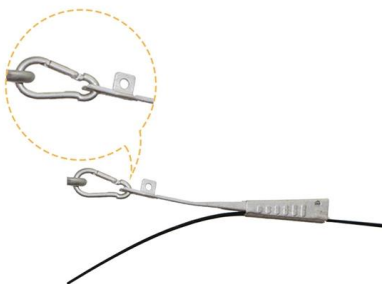


### Technical Application Papers No.11 Guidelines to the construction

The basic Standard establishes the requirements for the construction, safety and maintenance of the assemblies by identifying ratings, service conditions, mechanical and electrical requirements and

### The Meaning and Function of Primary, Secondary, and Tertiary

Follows the principle of "one machine, one switch, one RCD, one box, one lock," ensuring no single switch controls multiple devices. This explanation aims to clarify the roles and functions of



### Primary Electric Distribution for Industrial Plants

Introduction My other Course E208, "Electric Power Distribution for Industrial Plants", is a low voltage system (under 600 volts) suitable for small and medium sized industrial plants with relatively light



**ORDER no. 45 from September 7th, 2016**

a) electrical low voltage installations: electrical installations that use low voltage, connections, overhead or underground low voltage electrical lines, transformers and stations (low voltage side), as well as



**Selected Requirements for the Design and Development of**

For low-voltage switchgear and control gear that are already available, the SIST EN 61439 standard contains key information. It defines the division of responsibilities and requirements for the

**Wolf Theiss**

Hier sollte eine Beschreibung angezeigt werden, diese Seite lässt dies jedoch nicht zu.



**Microsoft Word**

1.50 m for cable trays holding major cables from general low-voltage panels. 2 m for cable trays holding secondary distribution cables (lighting, power sockets, low-power devices).



## Low Voltage Directive (LVD)

The low voltage directive (LVD) (2014/35/EU) ensures that electrical equipment within certain voltage limits provides a high level of protection for European

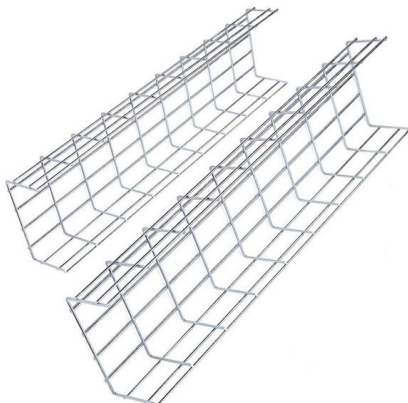


## Electrical equipment designed for use within certain voltage limits

The national law in Member States shall indicate the languages required. Manufacturers should implement the legal requirements of the Member States regarding languages.

## Modernising Electricity Distribution Network in Romania

The Ministry of Energy has signed a further 21 financing contracts under the Modernisation Fund, Key Programme 3 - Support for the extension



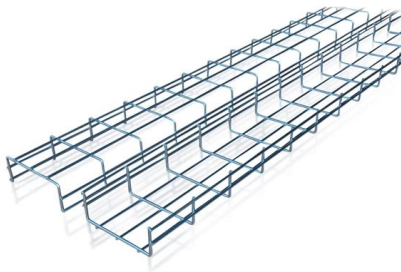
## Industrial Automation Wiring and Grounding Guidelines

Purpose This publication gives you general guidelines for installing an Allen-Bradley industrial automation system that may include programmable controllers, industrial computers, operator



## International-electrical-standards-regulations

All the low voltage electrical installation shall comply with the French standard NF C 15100. This standard provides detailed rules concerning all the aspects of the wiring and designing of the



## Design requirements and standards for low voltage

Design requirements for low voltage distribution boxes cover NEC, IEC, and safety standards to ensure reliable, compliant electrical installations.



## Types and features of LV switchboards

CEI EN 61439-2 "Assembled protection and switching equipment for low voltage (LV switchboards) - Part 2: Power switchboards" It defines the

### SUPPORTS

### DIN RAIL INSTALLATION



## Best Material for LV Distribution Box , Axis Electricals

What are the key material performance requirements of an Electrical Distribution Box? Due to their application in electrical systems, the material



## Overview on Electricity Regulations in Romania

International 26. Are there any special requirements or limitations on acquisitions of interests in the electricity sector by foreign companies? The regulations issued in the electricity sector do not provide



### Boxes in Distribution Cabinet and Network Blocks

CAHORS has solid expertise in developing and manufacturing low voltage products for underground networks. CAHORS has a wide range of enclosures suited to your various network and connection

## Contact Us

---

For datasheets, pricing, or custom high-speed optical interconnect solutions, please visit:  
<https://syropy.com.pl>