

Reservation of Main Wiring for Indoor Distribution Box





Overview

What Is a Distribution Box?

A distribution box, also known as a power distribution unit, is a critical component in any electrical system.



Reservation of Main Wiring for Indoor Distribution Box



Single Phase Distribution Box Wiring Diagram for

Wiring Accessories for Single Phase Distribution Board Main Distribution Board or Fuse Boards (Consumer Unit) usually contains on the following three main units

LV/MV power substation equipment and wiring

Figure 1 is an example layout. This layout is suitable for a main 11 kV substation, also supplying local low-voltage distribution, and it will be seen that it



Single Phase Distribution Box (DB) Wiring Diagram and

Hey, in this article we are going to see the Single Phase Distribution Box Wiring Diagram and Connection Procedure. A distribution board or

Home Distribution DB Box Wiring Connection Diagram , DB box wiring ,

Welcome to our channel ?@Electricalgenius? In this video, we'll take you through a detailed step-by-step guide on wiring a home distribution DB (Distribution Board) box.



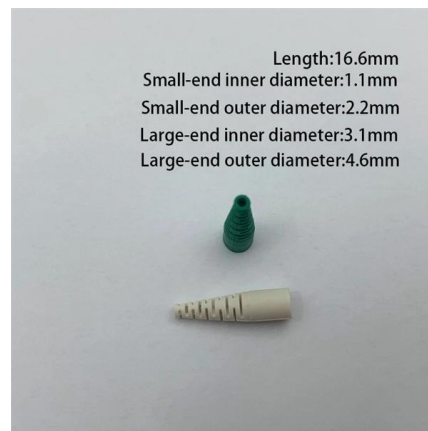
A Step-by-Step Guide to Wiring an Electrical Panel Box

Find out how to properly wire an electrical panel box with a comprehensive diagram and step-by-step instructions.



on video How to Wire a Home Distribution Box

How to Wire a Home Distribution Box - Step-by-Step , Distribution DB box wiring diagram
Welcome to our channel! In this video, we'll walk you through the



Understanding Circuit Breaker Wiring Configurations in

Correct wiring methods for circuit breakers within distribution boxes are fundamental to ensuring electrical safety and compliance with established codes.





Booking : Search results. Book your hotel now!

Search and book accommodations, flights, and vacation packages worldwide on Booking . Compare prices, ratings, and availability for your next trip.



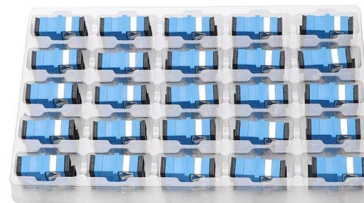
Distribution Box and Selection Guide

Distribution Box Selection Guide This guide provides information on how to select the appropriate Distribution Box for Electric project. If you have any



How to Wire a Home Distribution Box

In this video, we'll walk you through the process of wiring a home distribution box with a detailed connection diagram. Whether you're an electrician or a DIY



The Complete Guide to Distribution Box: Installation, Types & More

What's the difference between a distribution box and a sub-panel? A distribution box typically refers to the main electrical panel that receives power from the utility service. A sub-panel is



GENERAL SPECIFICATIONS FOR ELECTRICAL WORKS

All panels' schematics & wiring diagram including control wiring. Bar chart indicating general programme for supply, installation, testing and commissioning and handing over. Any other drawing or data that

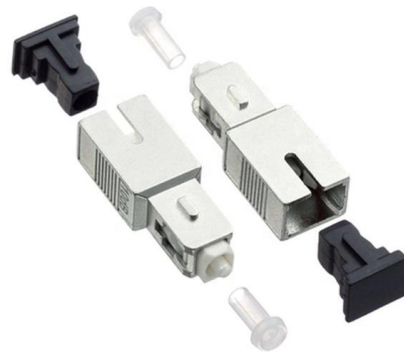


Home Distribution Box (DB) Wiring Diagram , DB box connection

In this video, I'll show you the complete wiring diagram of a home distribution board (DB). You'll learn how to connect the main circuit breaker (MCB), resid

Wiring Best Practices: A Guide to Distribution Boards

As the heartbeat of any electrical system, distribution boards play a crucial role in ensuring a safe and efficient power supply. Whether you're a homeowner,



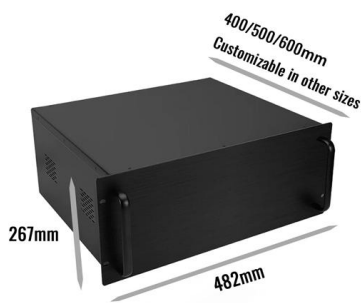
5 Room Distribution box wiring with all Protection Device

single phase distribution board wiring In this video, I try to explain the concept of single phase house wiring system with all electrical protection device.



How to Install a Distribution Box--A Comprehensive

Before starting the installation, finding a proper place for putting the distribution box is crucial, because it largely decides the safety and convenience



Transformer and Distribution Cabinet Equipment

During insertion, the grounding contact should connect before the main contact; during withdrawal, the grounding contact should disconnect after

Step-by-Step Guide to Install MCB Distribution Box

Learn how to safely install an MCB distribution box with this comprehensive guide. Step-by-step instructions to ensure correct installation.



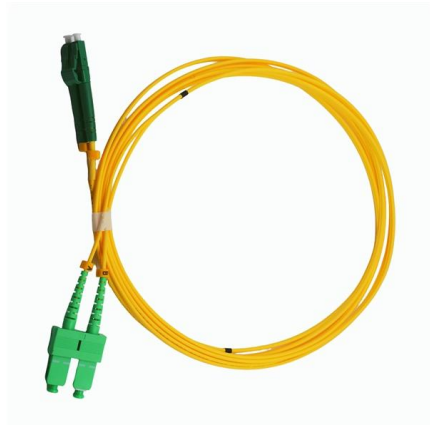
What is the Internal Structure of The Distribution Box

What is a Distribution Box? Definition A distribution box is an essential electrical component used to manage and control the flow of electricity



Wiring requirements of distribution box

The opening position of incoming and outgoing cables of the distribution cabinet shall be reserved by the supplier according to the size. Close after cable laying.



How to Install a Cable Distribution Box Safely and

Wiring arrangement: Arrange the wires neatly in the box, fix them with zip ties, avoid wires from tangling or coming into contact with sharp edges, and

Distribution db box wiring diagram

A distribution board DB is where the electrical supply is distributed from within the building home. The main supply cable comes into the board and is then distributed to the breakers and from



What is a Distribution Box? - A Comprehensive Guide

A distribution box organizes and controls power flow, ensuring safety and efficiency in electrical systems.



Distribution Box Wiring Steps

?Wiring Direction?: Wiring between the main circuit breaker and each branch circuit breaker in the box generally goes on the left, and the wiring out of



How to Install a Cable Distribution Box Safely and

In modern electrical systems, cable distribution boxes (also known as electrical distribution boxes or distribution boxes) play a crucial role as the key

Contact Us

For datasheets, pricing, or custom high-speed optical interconnect solutions, please visit:
<https://syropy.com.pl>