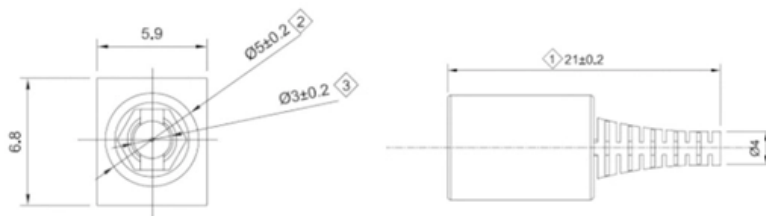


# Ring Main Unit Optical Cable Channel





## Ring Main Unit Optical Cable Channel

---



### Ring Main Unit in Electrical Distribution System

Ring Main Unit is one of a type of switch gear, mostly used in distribution network. Read this blog to find out more about RMU, its components,

### 260312 THB Catalogue SafeRing\_SafePlus 12\_24kV (1YVA000022)

SafeRing is a SF6-insulated ring main unit for the secondary distribution network. SafeRing can be supplied in 10 different configurations suitable for most switching applications in 12/24 kV distribution



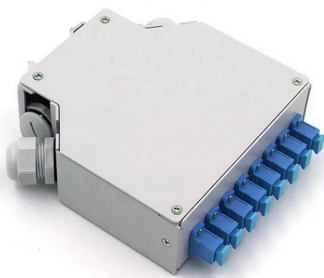
### Ring main unit

Ring main units can be characterized by their type of insulation: air, oil or gas. The switch used to isolate the transformer can be a fusible switch, or may be a circuit



### ELVAC RTU in Cable Network Ring Main Unit / Secondary Substation

Digital signals monitoring External power supply  
10-60 V DC with battery backup Optical  
communication ring Protection relays in cubicles



### What is Ring Main

When installing a ring main, it is important to use the correct cable size and type to ensure safe and efficient operation. The cables should be securely connected to the consumer unit and outlets,

### Ring main unit working principle

Home » Ring main unit working principle The ring main unit is a crucial component in electrical distribution systems, ensuring a reliable and efficient supply of power. At its core, the unit operates



### Components of Ring Main Unit (RMU) , Explained , TheElectricalGuy

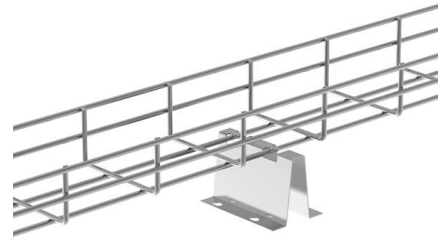
Audio tracks for some languages were automatically generated. Learn more This video explains the different components of ring main unit or RMU in a step by step and easy way.





## Ring Main Unit in Electrical Distribution System

Ring main units offer a safe way of cable testing from the easily accessible cable testing compartment on the front panel. Operators can simply



## Ring Main Unit as an important part of Secondary

Figure 4 - An example of distribution network with Ring Main Units (combinations of RMU units by Schneider Electric) In case a circuit breaker is the

## Circuit Diagrams

Ring Main and spurs Ring mains as they are called are a series of cables linked together, starting and terminating at the same point in a distribution board. The



## Ring main unit

The ring main unit was introduced in the United Kingdom and is now widely used in other countries. In North American distribution practice, often the equivalent of a



## Technical Specification of Ring Main Unit (RMU) , PDF

Technical Specification of Ring Main Unit (RMU) - Free download as PDF File (.pdf), Text File (.txt) or read online for free.



### Ring circuit

Ring circuits are subject to typical cable protection relating for all types of circuit topologies, in which the cable is at a higher amperage loading than the protective

### What Is a Ring Main Unit? Structure, Working Principle,

Ring Main Unit and Transformer Connection The ring main unit transformer connection concept is simple but important. The ring feeders pass



### Ring Main Unit - An In-Depth Guide to Electrical

A Ring Main Unit (RMU) is an essential piece of equipment in the electrical power distribution system. Commonly used in secondary distribution



## Circuit Diagrams

Where connection to a fixed appliance is required, a fused outlet unit may be fitted to the wall (rather than a plug socket) and connected into the ring main. These

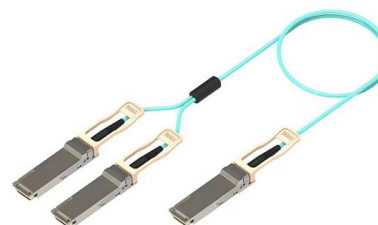


## Cable Distribution Box Ring Main Unit: Use Cases, Benefits, and

It provides switching functions (ring switches, transformer feeder, earthing) and cable termination compartments in a weather-protected form. Depending on the design, the unit can be

## Technical Specification of RMU

The RMU or Ring Main Unit is a factory assembled, metal-enclosed set of switchgear used at the load connection points of a ring-type distribution



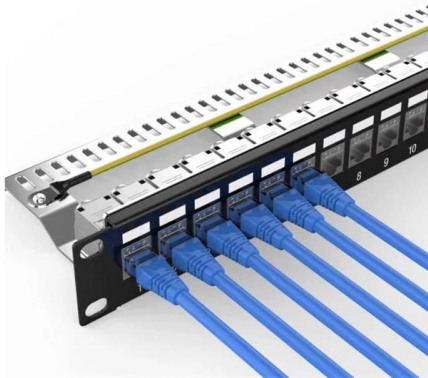
## Ring Main Unit (RMU) Switchgear: The Complete Guide for MV

Learn what an RMU is, how ring main unit switchgear works, common configurations, key ratings, and how to specify the right RMU for MV distribution.



## What Are the Components of Ring Main Unit (RMU)? A

This guide explains the components of Ring Main Unit (RMU), covering the single line diagram, switching devices, cable system, and enclosure



## How to Wire a Ring Main

How to Wire a Ring Main Known by many as a ring circuit, this project shows how to wire a ring main or final circuit as it is correctly termed. This project explains what

## What is a Ring Main Unit (RMU)? Working Principle

Complete guide to Ring Main Unit (RMU). Explore its working principle, internal components, SF6 vs. solid types, and key benefits in medium



## What is a Ring Main Unit? Definition Construction

A ring main unit (RMU) is a factory assembled, metal-enclosed set of switchgear used at the ring-type distribution network's load connection points.

## What is a Ring Main Unit (RMU) in Electrical



## Distribution

Structure of a Ring Main Unit The following components are typically housed inside an RMU cabinet: Input and Output Cable Compartments: These

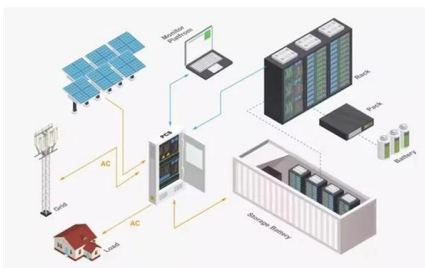


### What Is a Ring Main Unit and How Does It Work in

A Ring Main Unit (RMU) plays a critical role in modern medium-voltage power distribution systems, especially in urban networks, industrial

### The Role of Ring Main Unit (RMU) in the Power Grid

The Role of Ring Main Unit (RMU) in the Power Grid The Ring Main Unit (RMU) is a pivotal switching device in secondary distribution systems, situated between



### A Practical Guide to the Operation of Ring Main Units

Ring main switches are connected between the internal bus bar and the cable as shown in Figure 3 and incorporate either an internal earth function or facilities for external earthing. The earth



## A Step-by-Step Guide to Wiring a Ring Main Circuit in

They are wired in a ring configuration, connecting one socket outlet to the next and forming a continuous loop. Step-by-Step Guide to Wiring a Ring Main Circuit Turn



## Contact Us

---

For datasheets, pricing, or custom high-speed optical interconnect solutions, please visit:  
<https://syropy.com.pl>