

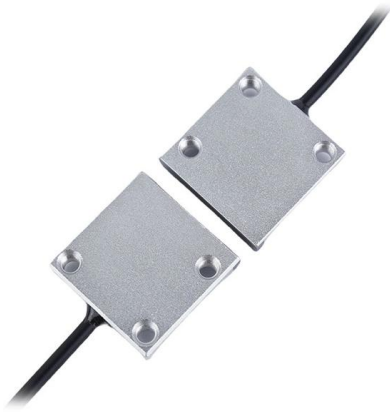
# Spatial Light Modulator Cable





## Spatial Light Modulator Cable

---



### Spatial light modulator

Spatial light modulator Schematic of a liquid crystal-based Spatial Light Modulator. Liquid crystals are birefringent, so applying a voltage to the cell changes the effective refractive index seen by the

### Spatial Light Modulator

Spatial Light Modulators (SLM) - High-precision technology for modern optics Discover high-quality solutions for the precise control and modulation of light

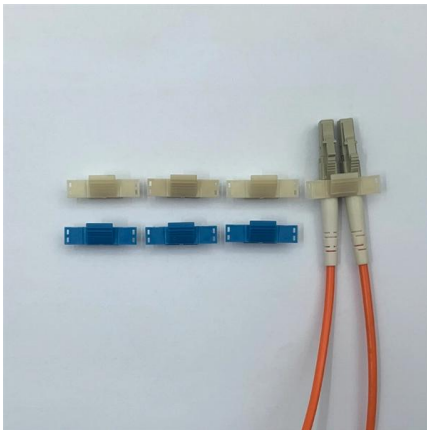


### SLM-200 Standard spatial light modulator ideal for a wide

It is a standard model ideal for a wide range of applications that require precise light control. It boasts high-resolution WUXGA (1920 × 1200) and high reproducibility of phase stability of less than 0.001 ?

### Spatial Light Modulator SLM-30

About this product Embedded Module of high power spatial light modulator Datasheets PDF Designed for integration in industrial equipment. Inherits the functions of the SLM-300, while achieving a



## CHAPTER 5: SPATIAL LIGHT MODULATOR SYSTEM

CHAPTER 5: SPATIAL LIGHT MODULATOR SYSTEM  
5.1 SPATIAL LIGHT MODULATOR Spatial Light Modulator (SLM) is a device that modulates the coherent light based on its control input. It is used in

### Spatial Light Modulator (SLM) Basics and Vendors

Learn about Spatial Light Modulators (SLMs), including optically addressed and electrically addressed types, their drawbacks, and a list of vendors.



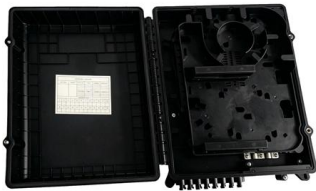
### Spatial Light Modulator

The Spatial Light Modulator (SLM) offers high-resolution phase modulation, first-class stability and versatile applications in optical systems.



## Top Spatial Light Modulator Market Companies

Independent ranking of top Spatial Light Modulator market companies, their revenues, strengths, and regional plays, plus data-driven outlook to 2031.



## Spatial Light Modulators

Spatial light modulator (SLM) is a general term describing devices that are used to modulate amplitude, phase, or polarization of light waves in space and time.

## Spatial Light Modulator

Der Spatial Light Modulator (SLM) bietet hochauflösende Phasenmodulation, erstklassige Stabilität und vielseitige Anwendungen in optischen Systemen.



## LBTEK-Spatial Light Modulator

The external type separates the modulator target surface from the main body, allowing the target surface to be fixed independently, effectively avoiding optical



### LUNA Phase Only Spatial Light Modulator

LUNA Spatial Light Modulator Kit - Contents:  
Phase only display incl. flex cable Driver unit  
Display mount Display mounting adaptor Screw  
adaptor M4 to 1/2" USB

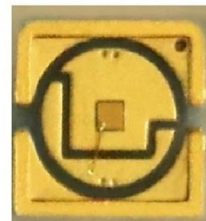


### Swave Photonics Honored with CES 2026 Innovation Award for

"Our HXR Spatial Light Modulator is continuing to advance in development and testing thanks to the work of the incredible Swave team and our partners."

### Optical Modulators - acousto-optic, electro-optic

Optical modulators are devices allowing one to manipulate properties of light beams, such as the optical power or phase, according to some input signal.



### SPATIAL LIGHT

Translucent Spatial Light Modulator The LC 2012 is our most basic Spatial Light Modulator system based on a translucent liquid crystal microdisplay with a resolution of 1024 x 768 pixel (XGA).

### Liquid crystal spatial light modulators



The SLMs are available as single mask configuration for phase or amplitude/polarization modulation and as dual mask SLMs for simultaneous modulation of phase and amplitude in a 4f-arrangement or in a



### Spatial light modulators

Research on novel materials and designs that improve the performance and efficiency of SLMs is prevalent, showcasing innovations that address challenges like speed, resolution, and wavelength



### Broadband Terahertz Liquid Crystal Spatial Light Modulators for

Efficient and fast optoelectronic modulators and spatial light modulators are required for mid-infrared imaging, sensing, security screening, communication and navigation, to name a few.



### Spatial light modulator

As its name implies, the image on an electrically addressed spatial light modulator is created and changed electronically, as in most electronic displays. EASLMs usually receive input via a





### **GAEA-2.1 Phase Only LCOS-SLM**

HOLOEYE offers different versions of the GAEA phase only spatial light modulator. The different panel versions are optimized for the use at different wavelength



### **Transmission amplitude spatial light modulator**

SIMTRUM's spatial light modulator can change the amplitude, phase and polarization state of the light distribution in space under the control of the driving

### **Mastering Spatial Light Modulators**

Discover the principles, types, and applications of Spatial Light Modulators in optics, including their role in beam shaping and holography.



### **FinancialContent**

Holographic Spatial Light Modulator platform recognized for excellence in design and engineering Swave Photonics, the true holographic display company, today announced that its



## Spatial light modulators for industry and research

Due to the increasing miniaturization and complexity in the semiconductor industry, but also in many other technical sectors and industries, high-precision and

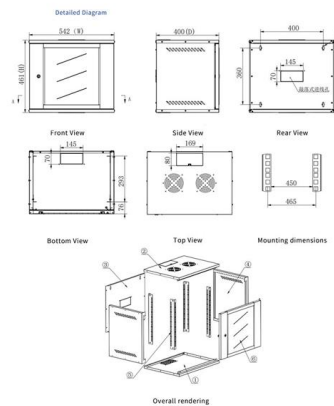


### Spatial Light Modulator

Ein Spatial Light Modulator (SLM) ist ein optisches Bauteil, das die räumliche Verteilung von Licht in Echtzeit verändert. Über Flüssigkristalle oder Mikrospiegel kann das einfallende Licht pixelweise

### Phase Modulators - optical modulator

Clearer terms for such devices are spatial light modulator and wavefront modulator. Bulk vs. Waveguide Modulators In the context of electro-optic modulators, there



## Contact Us

For datasheets, pricing, or custom high-speed optical interconnect solutions, please visit:  
<https://syropy.com.pl>