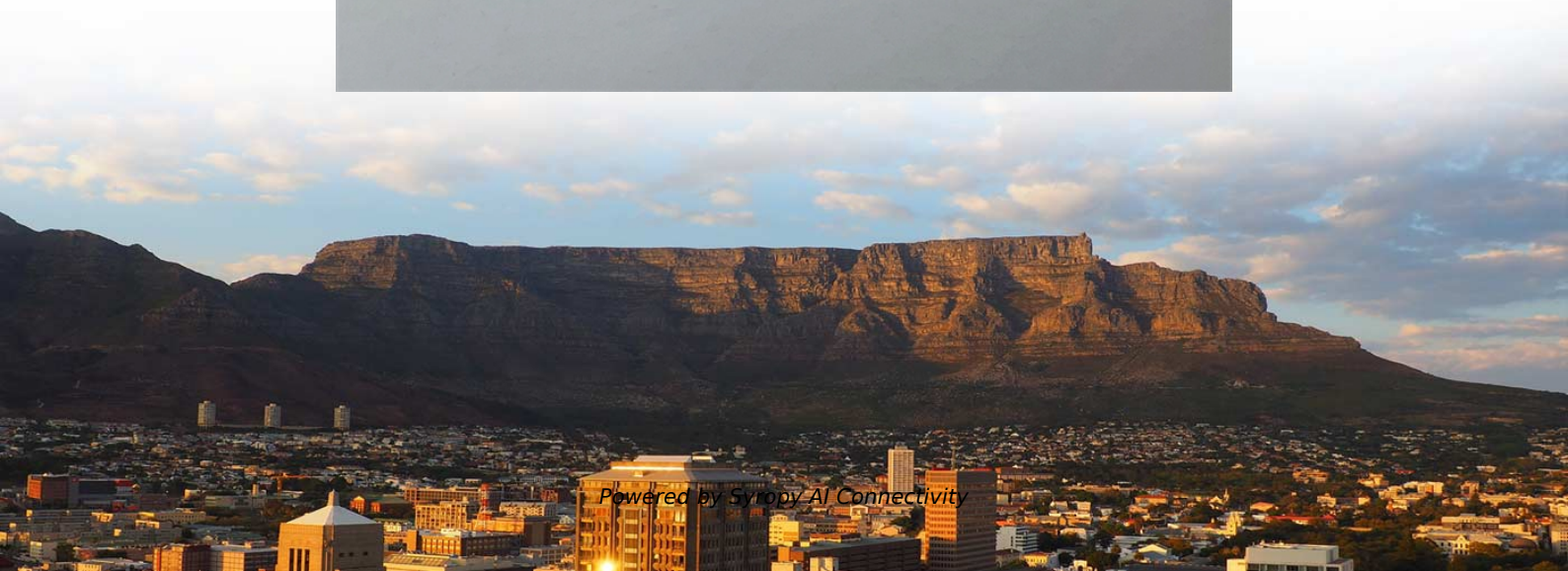
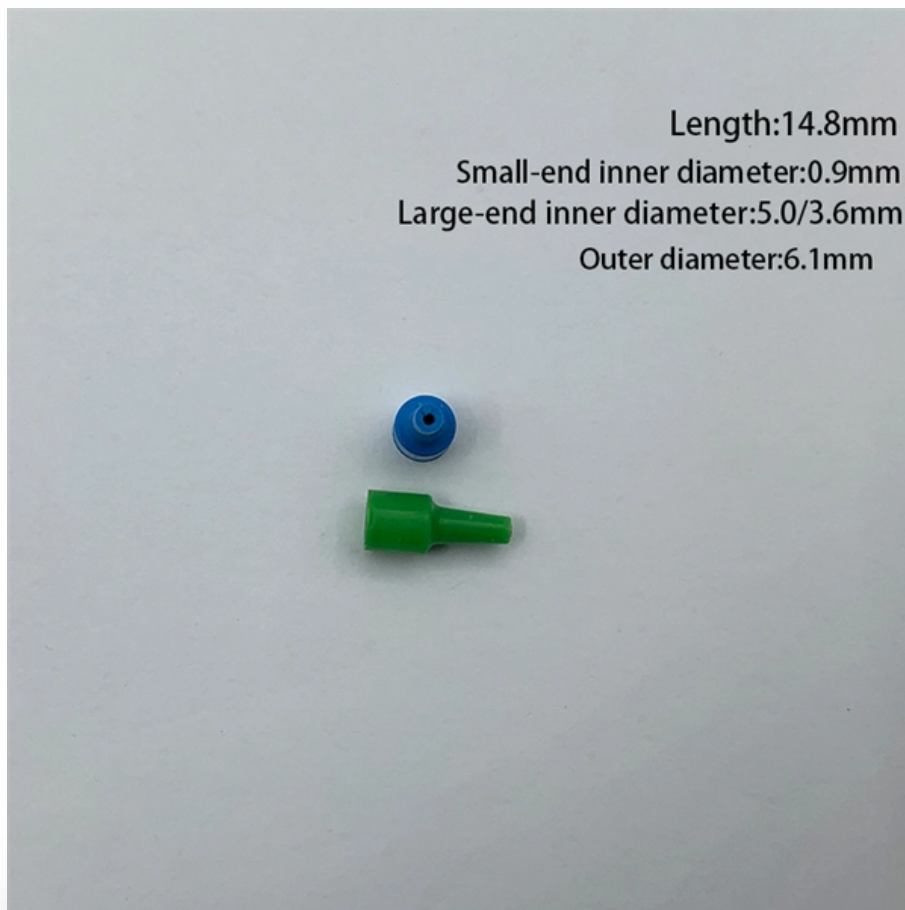


# **Specifications for irregular funnel-shaped cable tray connectors**





## Specifications for irregular funnel-shaped cable tray connectors

---



### FOR EMAIL LOW RESOLUTION

Outside Return Flange Cable Trays are produced with flanges returning towards outside of the tray. These tray systems are produced for Medium, Heavy, Extra Heavy and Double Extra Heavy Duty

### Elcon Trays Catalogue

COMPANY ELCON CABLE TRAYS PVT. LTD. is an ISO 9001:2015 Company that offers a wide portfolio of Erection Hardware under one roof was incorporated in the year 1987.

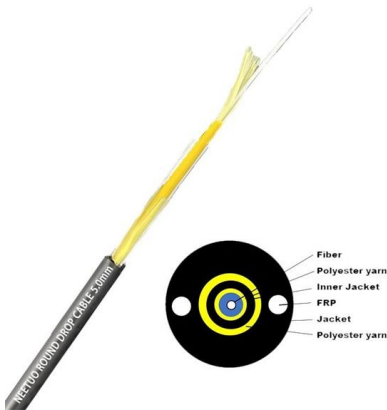


### Product Catalogue Cable Management Solutions

Cable ladder is a more reliable, less expensive solution for supporting cable, which is easier to maintain, proves more adaptable to changing needs, and is more suitable for harsh and corrosive environments.

### Microsoft Word

Cable Tray Types & Specification Perforated Cable Trays Features Moderate ventilation with added cable support advantage Thickness available 1.2mm, 1.6mm, 2.0mm, 2.5mm, 3.0mm.



### Cable Tray Technical Guide A practical guide to product selection and

In designing supports for a cable tray system, consideration should be given to the loads associated with future cable additions and any additional loading that may be applied to the cable tray system (e.g.,

### TRAY CABLE CATALOGUE

Tray Cable Introduction Tray cable is a multi-conductor or multi-pair or triad control, signal or power cable specifically approved under the Canadian Electrical Code for installation in trays.



**MPO-MPO** Low Smoke Halogen Free Sheath  
**Multimode 10 Gigabit 24 pole OM3**  
Insertion loss <0.35dB    Return loss >50dB



### Cable Tray Systems Catalog

Please click the appropriate link below to view the catalog section as a PDF.



## 7 Types of Cable Trays: How to Choose the Right One

Cable tray systems are engineered support structures designed to route, support, and protect insulated electrical cables used for power distribution,

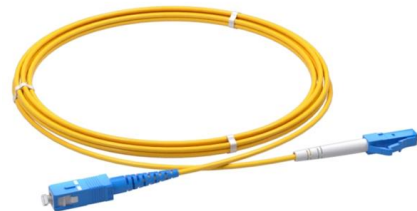


### Elcon Trays Catalogue

The wire mesh cable tray system is designed for efficient cable arrangement in all kinds of set-up. It can be assembled fast, and can be mounted on ceilings as well as walls.

### CABLE TRAY

SFSP wire Basket Trays have a fast connection profile for installations requiring long runs of straight Cable Trays lengths. Applications : Network cabling, wiring closets, fiber-to-desktop applications and



### Teck and Tray Cable Fittings , PDF Catalogues , ABB Electrification

Browse Star Teck® fittings & connectors for teck and tray cables, offering easy installation, reliable terminations, and high-quality engineering.



## Full cable tray systems specification document

The drawings which constitute a part of these specifications indicate the general route of the cable tray systems. Data presented on these drawings is as accurate as preliminary surveys and planning can



## Product Catalogue Cable Management Solutions

Delivering engineered solutions in cable management ABB manufacturers a comprehensive range of cable tray systems and solutions including cable ladder, perforated tray, channel tray and metal



## SUPPORTS DIN RAIL INSTALLATION



## FRP Perforated Cable Tray Specifications

FRP Cable Tray - Catalogue - Free download as PDF File (.pdf), Text File (.txt) or read online for free. This document provides technical specifications for fiber



## Perforated GI Cable Tray Specifications

The document provides technical specifications for perforated galvanized iron (GI) cable trays with tray covers. It outlines 5 key sections: a description of



## An Introduction to Circular Connectors and Cables

Circular connectors are cylindrical electrical devices of varying size that are designed to withstand a range of harsh environments.

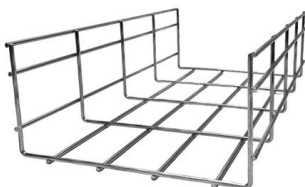


## PW Cable Tray understanding our Products

expansion ConnectorS and SupportS: It is important to consider thermal expansion and contraction in the cable tray system, especially for outdoor applications. NEMA Standards Pub. VE2 addresses the

## CATALOG Cable Tray Cable tray systems

Cable tray systems, including trays, supports, fittings and other materials, are generally less expensive than conduit wiring systems. In addition, major cost savings are generated by the relative ease of



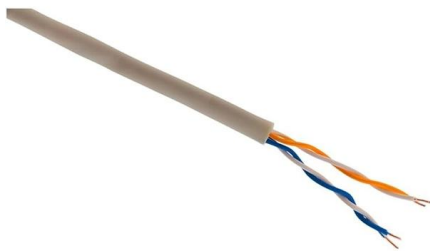
## Channel cable tray specification document

2.05 General: Except as otherwise indicated, provide ventilated metal channel cable trays, of types, classes and sizes indicated with splice connectors, fittings and all other necessary accessories for a



## Cable Tray Specifications and Sizes , PDF

The document describes specifications for different types of cable trays, including outside returned flanged cable trays in various standard sizes, light duty and



## 23 CABLE MANAGEMENT CATALOGUE.pdf

Strong and simple to install, metal cable tray is available in light, medium and heavy-duty profiles and features a pre-galvanised finish. The sections of metal tray simply interconnect and bolt together for

## Cable Tray Connectors , McMaster-Carr

Choose from our selection of cable tray connectors, including cable and hose trays, steel formable cable and hose trays, and more. Same and Next Day Delivery.



## Specifications

Teck cables with outer jacket may be used for exposed or concealed wiring in wet or dry locations, indoors/outdoors and in corrosive environments. Teck cables are suitable for use in ventilated, non



## LADDER CABLE TRAY SYSTEM 90° Vertical Elbow Outside

MATERIAL & FINISH SPECIFICATIONS (Ladder Cable Tray) - Siderails: Mill-Galvanized Steel ASTM A-653-G90 CS (18 & 16 Gage); ASTM A-653-G90 CS (14 & 12 Gage) Hot-Dip Galvanized



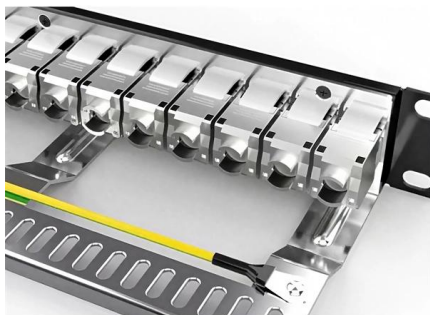
### A Star Teck®

Suggested specifications for metal-clad cable or Teck cable fittings in hazardous locations: All metal-clad cable fittings for jacketed and non-jacketed interlocked armour cable, continuous corrugated cable or



### 12-SDMS-06

Cable tray sections, fittings and connected raceways shall be bonded properly using bonding jumper at both ends. The bonding jumper shall be bare copper conductor of 50 mm<sup>2</sup> size and 400 mm long.



### Cablofil Wire Cable Tray Product Specifications

Cablofil® Wire Cable Tray Connectors & Mounting Hardware Cablofil has designed a wide range of easy-to-use connectors and supports including our Fast Assembly System (FAS) that simplify



## RECOMMENDED SPECIFICATIONS OF JUNCTION BOX AND CABLE TRAY

Basic requirements for some aspects of the E& I components (e.g., cable tray and junction box) can be found in the ABS Rules for Building and Classing Mobile Offshore Drilling Units (MODU Rules), as



## Contact Us

---

For datasheets, pricing, or custom high-speed optical interconnect solutions, please visit:  
<https://syropy.com.pl>