

Specifications of Telecom Multimedia Chassis





Specifications of Telecom Multimedia Chassis

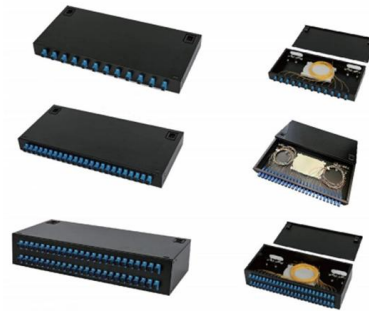


Telecom Hardware

Reliable telephony hardware Feature rich media processing resources for IP and TDM networks in a ready to deploy 1U chassis available with AC or DC dual-redundant power supplies.

Understanding IMS in Telecoms: A Simple Guide for Everyone

Understanding IMS in Telecoms: A Simple Guide for Everyone March 10 2025, by Stephanie Burrell 6 min reading time In the ever-evolving world of telecommunications,



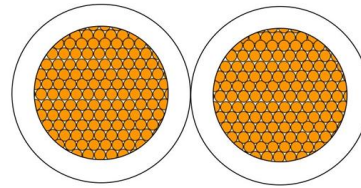
High Density Multimedia Chassis

The chassis utilizes industry-standard LGX® dimensioning for the module/adapter panel slots. Available modules support many common fiber optic connections such as SC simplex, LC duplex, MPO/MTP,



NG4-CHASSIS

CommScope's NG4access universal chassis supports configurations up to 576 terminations with LC adapter packs or 288 terminations with SC adapter packs. Each chassis includes 24 access trays



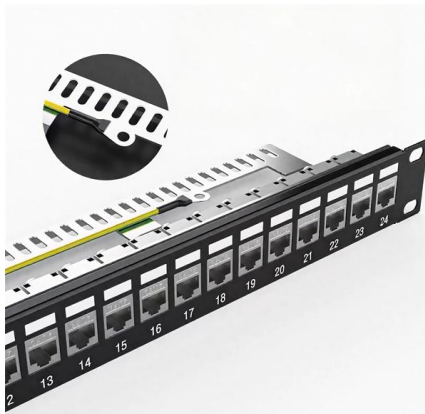
Amphenol Broadband Solutions

Amphenol Broadband Solutions



13-SDMS-08 REV. 00 MATERIAL SPECIFICATION FOR

This Distribution Material Specification describes the minimum technical requirements for design, engineering, construction, manufacture, inspection, testing and performance of racks and cabinets



Chassis for "iMcV" Series Modular Media

Technical Code - MTSFB

This Technical Code specifies the minimum requirements for the technical specifications, security, and compliance of TV boxes to ensure secure and



Converters

The MediaChassis/2 and IE-MediaChassis/2, flexible, table-top chassis support a variety of B+B SmartWorx media and mode converter modules for Fast Ethernet, Gigabit, T1/E1, DS3/E3/STS-1

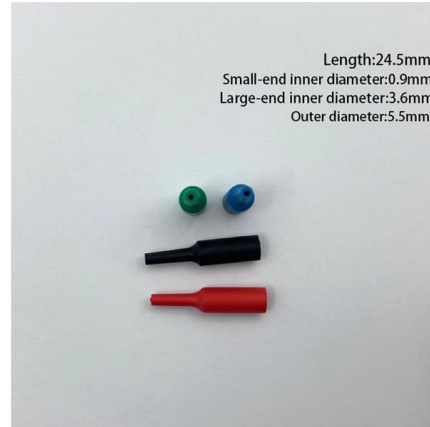


Base specification of Open Edge sleds for Telecom Infrastructure

This document defines the base technical specifications for the Sleds used in Open Compute Project (OCP) Open Edge, which are applied in Telecom infrastructures. The sleds may include servers,

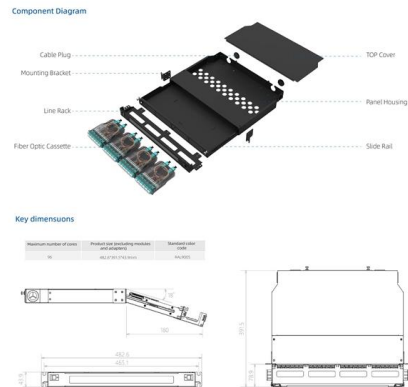


03.SMI.163.ATCA_WP.qxd



Telecoms

Cubis is Europe's leading manufacturer of network access chamber and ducting systems, used in the construction of infrastructure networks for rail, telecoms, water, construction and power markets.



Communications Chassis

Serving as the silent guardian of critical communication equipment, this chassis is the unsung hero ensuring seamless, uninterrupted connectivity in our digital age.

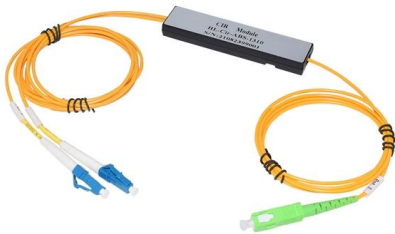


Designed specifically to address growth issues within the telecom industry, ATCA includes specifications for power and performance density. ATCA supports up to 200 watts per blade and a maximum of 16



Architecture , AdvancedTCA , Elma Electronic

AdvancedTCA is an open, modular embedded computing standard originally developed for telecom and networking systems. It specifies chassis, backplanes, power architectures, and robust cooling to



TS 121 202

The present document identifies the 3GPP Technical Specifications and Technical Reports specifically relating to the Common IP Multimedia Subsystem (IMS) maintained by 3GPP. Standards



FRM220-CH08: 8-Slot Fiber Chassis Dual Power Network

Explore the FRM220-CH08 an 8-slot chassis for FRM220 converters with redundant power and in-band management. High-density telecom solution - buy now for reliable networking!

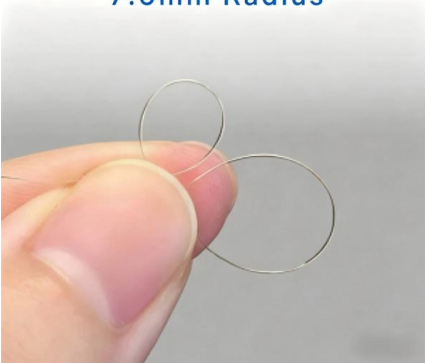


PICMG , AdvancedTCA

The Advanced Telecom Computing Architecture (AdvancedTCA®) specifications, denoted PICMG 3.X, are a series of PICMG specifications, designed to provide an open, multi



7.5mm Radius

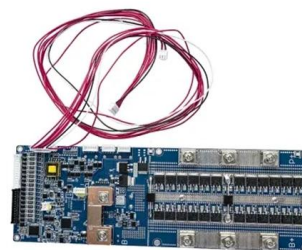


Advanced Telecommunications Computing Architecture

Advanced Telecommunications Computing Architecture (ATCA or AdvancedTCA) is the largest specification effort in the history of the PCI Industrial Computer Manufacturers Group (PICMG), with

Mediant 1000B Gateway & E-SBC Hardware Installation Manual

The chassis front panel is displayed in the figure below and described in the subsequent table. Figure 3-15: Rear Panel of Mediant 1000B SBC and Gateway Warning: When using only

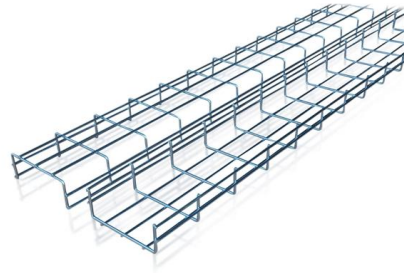


Media Converter Chassis , Media Converter Rack , Perle

For a low to mid density solution, please check out the MCR200 Media Converter Chassis. For those environments requiring a medium to large-scale deployment



Hier sollte eine Beschreibung angezeigt werden, diese Seite lässt dies jedoch nicht zu.



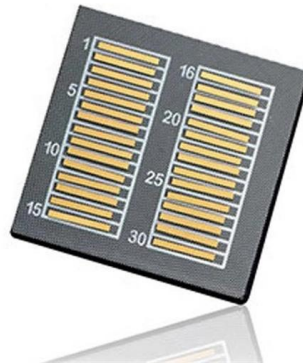
TS 123 246

The present document may refer to technical specifications or reports using their 3GPP identities. These shall be interpreted as being references to the corresponding ETSI deliverables.



Data Sheet for MediaChassis Series

MediaChassis Series Standalone Chassis for Customer Premises and Remote Access Points
The MediaChassis series is an ideal solution for the fiber optic connectivity of remote locations or in



PICMG_3.2_ATCA_WP_130.fm

The ATCA 3.0 base specification defines the frame (rack) and shelf (chassis) form factors, ATCA Terminology core backplane fabric connectivity, power, cooling, management interfaces, and the The





telecommunications_technical_wiring_standards

Product specifications, general design considerations, and installation guidelines are provided in this written document. Quantities of telecommunications outlets, typical installation details, cable routing



Contact Us

For datasheets, pricing, or custom high-speed optical interconnect solutions, please visit:
<https://syropy.com.pl>