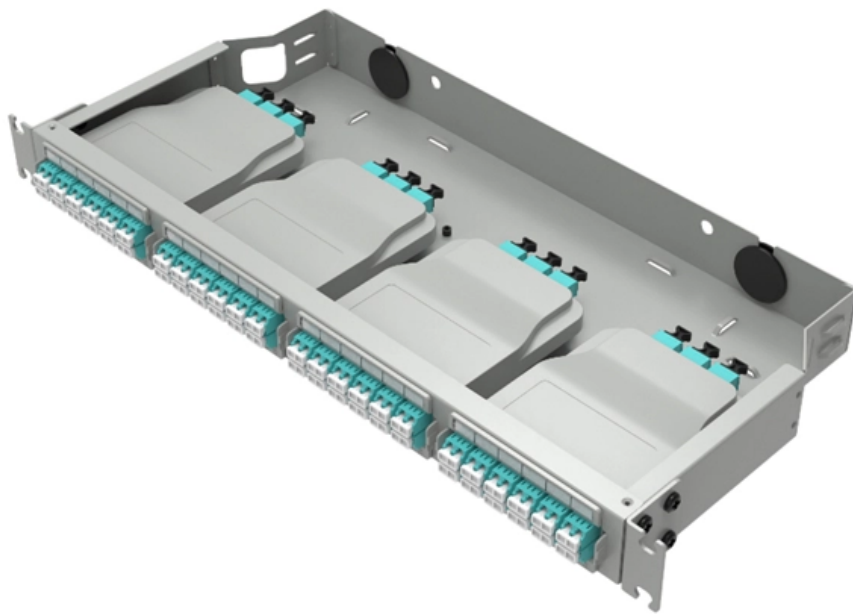


# **Standard Installation Method for Cable Management Stands**





## Standard Installation Method for Cable Management Stands

---

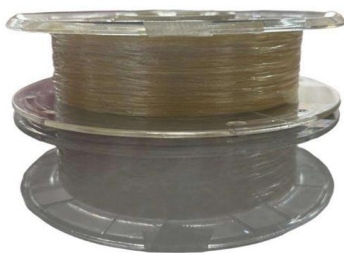
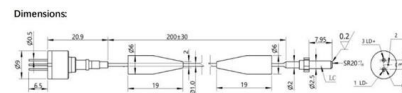


### Cable Tray and Ladder Installation Method

This document provides a method statement for installing cable trays and cable ladders. It outlines responsibilities for the project construction manager,

### MEKA PRO THE CABLE MANAGEMENT HANDBOOK

INTRODUCTION Meka Pro manufactures high-quality cable management systems in accordance with many standards, regulations, and instructions. The aim of this book is to present essential parts of



### Pocket guide to cable management

Atlas Copco has developed this pocket guide to help you find effective solutions to your facilities unique cable needs. It includes information developed from Atlas Copco's many years of industrial

### PREVENTION OF PREMATURE COLLAPSE A GUIDE TO THE

4.1 Cable Management System (CMS): Assembly including different system components intended for the accommodation of insulated conductors, cables and possibly other electrical equipment in



### Positioning Devices: Cable Ties for Cable Management of Electrical

What is Cable Management? Positioning devices cover a wide variety of products, such as cable ties, fixing devices, bundling wraps, cable wraps, wiring ducts and similar types of related hardware.



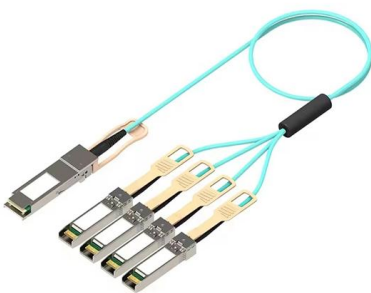
### Method Statement for Cable Laying and Termination for

The purpose of this method statement is to provide general guidelines for cable laying and cable termination for control and signal cables. Scope of this



### Cable Management Systems Explained for Your Needs

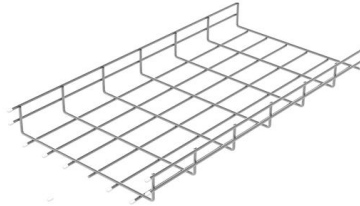
Explore the best cable management systems for safe, scalable cable routing -- including trays, ladders, trunking, and more.





## How to Install Horizontal and Vertical Cable Managers

Organizing cable management within a rack simplifies network device access and makes it easier to track cables during installation. This article



## Method Statement installation of Cable Trays and Ladders

This method statement covers the site installation of the cable tray & ladders and the requirements of checks to be carried out.

## Efficient Cable Tray Installation Methods for Organized

Discover efficient methods for installing cable trays to organize power, data, and security cables. Explore wall, ceiling, and floor mounting options

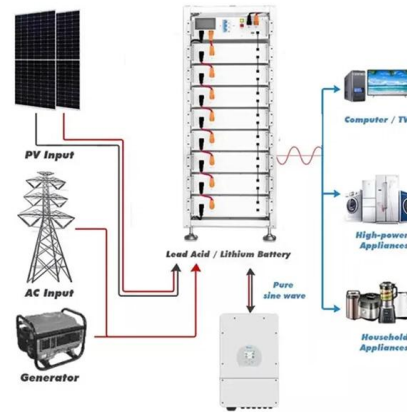


## Guide to cable support systems

The systems are suspended from the ceiling with threaded rods, stand-off brackets allow raised floor mounting of cable trays, ladders and mesh cable trays. The universal systems comprise ceiling



Hier sollte eine Beschreibung angezeigt werden, diese Seite lässt dies jedoch nicht zu.



### Cable Management System Installation

The cables are secured to the cable management brackets on the MIO/UMIOs via cable ties or hook-and-loop straps, and within the cable management tray via

### Cable Tray Installation Method Statement

Below is the detailed cable tray installation method statement not only for cable tray but also applicable for GI ladder and trunking for indoor and outdoor applications



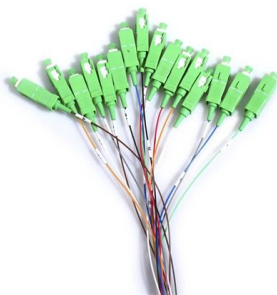
### Beama Best Practice Guide , Installation Of The System , Cable

2.2 Structural characteristics When considering the installation of the cable supports system it is imperative to avoid the cutting or drilling of structural building members without the approval of the



## Best Practice Guide to Cable Ladder and Cable Tray Systems

Introduction This publication is intended as a practical guide for the proper and safe\* installation of cable ladder systems, cable tray systems, channel support systems and associated supports.



## Electrical installation handbook

Electrical installation handbook users The electrical installation handbook is a tool which is suitable for all those who are interested in electrical plants: useful for installers and maintenance technicians

## Cable Tray Installation Method Statement

This document provides a method statement for installing cable trays and ladder trays on the Sheikh Jaber Causeway project. It outlines procedures for storage



## PREVENTION OF PREMATURE COLLAPSE A GUIDE TO THE DESIGN, INSTALLATION

A GUIDE TO THE DESIGN, INSTALLATION AND INSPECTION OF CABLE MANAGEMENT SYSTEMS  
Rotherwick House Version 1.1 3 Thomas More Street London E1W 1YZ



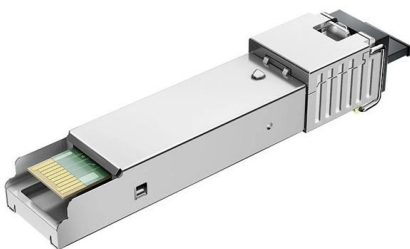
## Cable Tray and Trunking Installation Guide

This document provides a method statement for installing cable tray or trunking systems. It outlines the key steps, which include evaluating materials, properly



## Beama Best Practice Guide , Installation Of The System , Cable

The following recommendations are intended to be a practical guide to ensure the safe and proper installation of cable ladder and cable tray systems and channel support and other support systems.

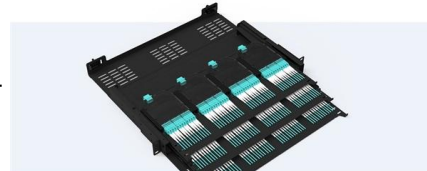


## MEKA PRO THE CABLE MANAGEMENT HANDBOOK

\_36 INTRODUCTION Meka Pro manufactures high-quality cable management systems in accordance with many standards, regulations, and instructions. The aim of this book is to present essential parts

### Pre-Terminated Patch Panel

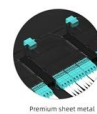
- Standard 19" width
- Max 144 fibers in 1U
- Ultra-High Density Ready



Dual-nail, easy install & maintain



Lightweight ABS IP65 enclosure



Premium three metal with matte coating

## Cable Tray Trunking & Ladder Installation Method for

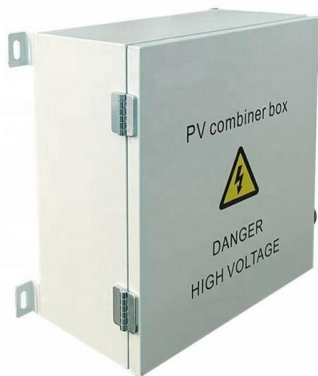
Resources For Electrical & Electronic Engineers Cable Tray Trunking & Ladder Installation Method for Projects The purpose of this article is to define the





### Cable Containment Installation Guide

The document outlines the scope, procedures, and methods for installing a cable ladder/tray/trunking system. It includes site mobilization, examination of



### Best practice guide to cable ladder and cable tray

The following recommendations are intended to be a practical guide to ensure the safe and proper installation of cable ladder and cable tray systems

### Network Cable Management: Complete Guide

Effective network cable management transforms chaotic server rooms into streamlined, professional installations that enhance performance, reduce



### Cable Containment Installation Guide

1. The document outlines the scope, procedures, and methods for installing a cable ladder/tray/trunking system. It includes site mobilization, examination of



## Contact Us

---

For datasheets, pricing, or custom high-speed optical interconnect solutions,  
please visit:

<https://syropy.com.pl>