

Standard Requirements for Indoor Optical Cable Reel Installation





Overview

The plan should include equipment and supplies, fiber cable specification, location of equipment, testing requirements, data forms for testing, personnel experience level and assignment, installation methods, identification of potential problem areas, safety issues . Recommendations for Fiber Optic Cable Installation Where reels are supplied with protective material fitted over the cable, the protection should remain in place until the cable will be installed. WARNING: To minimize hazards to yourself and others in or near the work area, follow all company rules for setting up barricades, ladders, scaffolding, and warning signs. Any material used above the floor should be arranged so that it cannot fall and hit individuals underneath. They define a minimum baseline of quality and workmanshi for installing electrical products and systems. 103 describes characteristics, construction and test methods for optical fibre cables for indoor applications.



Standard Requirements for Indoor Optical Cable Reel Installation

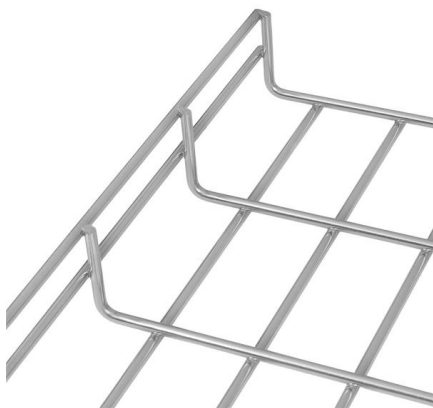


General Optical Fiber Cable Installation Considerations

General Optical Fiber Cable Installation Considerations Some key considerations for installing optical fiber cable are highlighted below. Failure to follow these guidelines may result in damage or

FOA Standard For Installing Fiber Optic Cable Plants

This standard covers fiber optic cabling installed for communications networks, both indoor (premises installation) and outdoor (outside plant - OSP installation) applications.



General Optical Fiber Cable Installation Considerations

Some key considerations for installing optical fiber cable are highlighted below. Failure to follow these guidelines may result in damage or attenuation increases of the optical fiber or cable.

Standards-based factory testing of fiber-optic cable

Standards-based factory testing of fiber-optic cable Users of fiber-optic cable should know what tests are performed, and why. Andrew K. Straw
The final installed



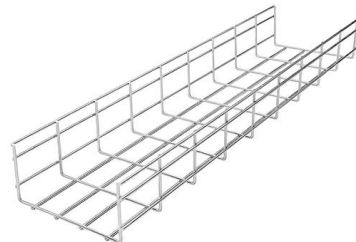
Installation requirements for optical fiber cables - Pacific NW Trade

The installation requirements for optical fiber cables include proper cable routing, constant pulling tension, specialized termination techniques, testing, and marking.



FOA Standard For Installing Fiber Optic Cable Plants

Fiber optic cable may be installed indoors or outdoors using several different installation processes and as appropriate for the cable type being installed. Outdoor cable may be direct buried, installed



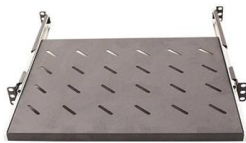
GENERAL INFORMATION

Temperatures - Installation & Operation
Installation and operating temperatures for indoor and indoor/outdoor fiber optic cables are defined in standards ICEA S-83-596 "Standard for Optical Fiber"



GENERAL INFORMATION

The installation tensile strength rating is the maximum value that a specific cable can withstand during an actual installation. Short term stresses during an installation can be caused by pulling the cable



Webit Cabling

Fiber Optic Installation Requirements: Complete Guide

Learn the different fiber optic cable installation requirements with our expert guide to ensure optimal performance and durability in your network.

Indoor Installation of Corning Optical Communications Fiber Optic Cable

Before the installation begins, carefully inspect the cable reel for protrusions such as nails and broken flanges which might cause damage to the cable as it is unreeled.



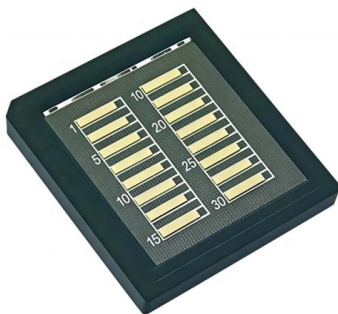
Recommendation ITU-T L.103 (08/2024)

In order for an optical fibre to perform appropriately, characteristics that a cable should have been described. Also, the method of determining whether the cable has the required characteristics is



Optical fibre cables -- Guidelines to the installation of optical fibre cabling

INTRODUCTION Optical fibre cabling provides a high performance communications pathway whose characteristics can be degraded by inadequate installation. This Technical Report provides guidance



GENERAL INFORMATION

Short term stresses during an installation can be caused by pulling the cable through ducts, around bends, back tension on the payoff reel, etc. Installation tensile strengths in excess of 2,700 Newton's



Fiber Optic Cable Installation Guidelines

This document provides guidelines for the proper installation of fiber optic cable to avoid damage and ensure optimal performance.

REINFORCED VIRGIN PVC TRUNKING
Superior Crush Resistance

ISO 9001
ROHS
DNV-GL

37.6MPA Tensile Strength	2856MPA Elastic Modulus
9.8KJ/M² Impact Strength	1.54G/CM Density

Indoor Installation of Corning Cable Systems Fiber Optic Cable

2.1. Leave the protective covering on the reel intact until it arrives at the installation site. If the covering has been previously removed, secure the cable end(s) during transit to prevent damage. Cable reels



Handbook Optical fibres, cables and systems

The ITU-T has published a complete set of Recommendations dealing with the above subjects: Recommendations of the ITU-T G-series on optical fibres and systems and Recommendations of



Fiber Optic Cable Installation Guidelines

This document provides guidelines for the proper installation of fiber optic cable to avoid damage and ensure optimal performance. Key guidelines include: only

101 Guidelines for Fiber Optic Cable Installation

A fiber optic cable should be tested three separate times during an installation: on the reel, the splicing test, and the final acceptance test. Extreme caution should



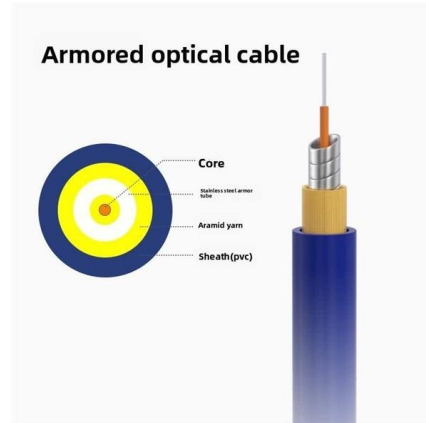
OPTICAL FIBRE CABLES INSTALLATION GUIDE

General. In any cable deployment, whether it is optical fibre or any other type of cable, it should be considered the considerable number of tasks related to the manipulation and laying of the cable.



Optical Fiber Cables for Indoor/Outdoor Applications

The cable must be sufficiently rugged to endure the rigors of installation. These cables are designed to comply with ICEA-640, "Standard for Fiber Optic Outside Plant Communications"



OPTICAL FIBRE CABLES INSTALLATION GUIDE

The objective of this document is to be an optical fibre cable installation and laying guide, addressed to new installers, also being useful as a reminder to experienced installers.

The FOA Reference For Fiber Optics

The Installation After the process of designing fiber optic networks is completed, the next step is to install it. What do we mean by the "installation process?" Assuming



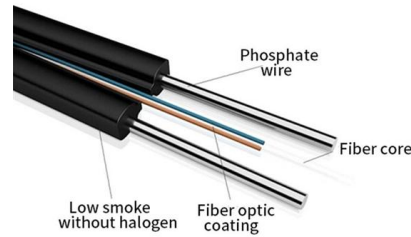
Lashed Aerial Installation of Fiber Optic Cable

CAUTION: Fiber optic cable is sensitive to excessive pulling, bending, and crushing forces. Consult the cable specification sheet for the cable you are installing. Do not bend the cable more sharply than the



Standard for Installing and Testing Fiber Optics

Unless directed by the owner or other agency that unused cables are reserved for future use, remove abandoned optical fiber cable (cable that is not terminated at equipment other than a connector and



Indoor and Outdoor Fiber Optic Cable Installation: Key

Selecting the right fiber optic cable ensures efficient data transmission, longevity, and durability in various environments. This guide

Technical requirements for cable installation and wiring

After the optical cable enters the house, strip its outer sheath, water blocking material and reinforcements, and directly use the middle FTTH cable for indoor wiring, which inherits all the



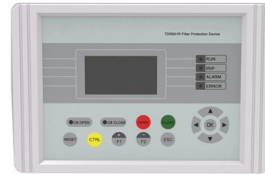
Direct-Buried Installation of Fiber Optic Cable

Cable Precautions / Specifications CAUTION: Take care to avoid cable damage during handling and installation. Fiber optic cable is sensitive to excessive pulling, bending, and crushing forces. Any



Underground Cable Installation

These losses may not be revealed until long after installation is complete. For these reasons extra care must be taken during the entire installation procedure. 1.03 Fiber optic cable is usually (but not



Optical Fiber Cable Installation Guideline

Recommendations for Fiber Optic Cable Installation. Where reels are supplied with protective material fitted over the cable, the protection should remain in place until the cable will be installed. During

Contact Us

For datasheets, pricing, or custom high-speed optical interconnect solutions, please visit:
<https://syropy.com.pl>