

Standard for Outdoor Secondary Distribution Boxes





Standard for Outdoor Secondary Distribution Boxes



HPL's AC DISTRIBUTION BOX (ACDB) for Solar

All of HPL-AC Distribution boxes are tested/certified as per IEC/IS standard. The enclosure is available only via the use of designated tools in order.

1 HDFHJFDHDFJKFDJKFDSJKFSD

This specification details requirements for 12kV outdoor cable connected distribution secondary type switchgear. In addition to conventional ring main units and free-standing switchgear, it includes 12kV



Cable Distribution Box for Outdoor Distribution

Designed for underground or outdoor distribution systems, the Cable Distribution Box offers a tamper-resistant and weatherproof solution for medium voltage control.



Non-Hazardous Outdoor Enclosures, Installation and

This article is about Non-Hazardous Outdoor Enclosures, Installation and Commissioning and Materials Selection & Requirements of Electrical Power



- IP65/IP55 OUTDOOR CABINET
- OUTDOOR CABINET WITH AIR CONDITIONER
- OUTDOOR ENERGY STORAGE CABINET
- 19 INCH

Secondary Distribution Substations

Substations inside building complexes are covered in another section. It covers the design of enclosures for housing outdoor rated HV plant. It shall not be used for the design of substations

Outdoor Power Distribution Boxes: The Backbone of

Discover how J&H Group's outdoor power distribution boxes deliver safe, weatherproof, and customizable solutions for modern industrial and



Ordering information

| MO | 1 | 2 | 3 | 4 | 5 | 6 |
|--|-------------------|--------------------|--------------------|-------------------|--------------------|--------------------|
| Model | SP2M1 | SP2M2 | SP2M3 | SP2M4 | SP2M5 | SP2M6 |
| Product name | Patch Panel | Patch Panel | Patch Panel | Patch Panel | Patch Panel | Patch Panel |
| Illustration | | | | | | |
| MO | 1 | 2 | 4 | 1 | 2 | 4 |
| Maximum number of cores | 144 | 288 | 576 | 144 | 288 | 576 |
| Product size (including product and packaging) | 482.8*202*74 (mm) | 482.8*202*781 (mm) | 482.8*202*777 (mm) | 482.8*202*74 (mm) | 482.8*202*781 (mm) | 482.8*202*777 (mm) |
| Standard color code | RAL9005 | RAL9005 | RAL9005 | RAL9005 | RAL9005 | RAL9005 |
| Inventory | 2 | 2 | 2 | 2 | 2 | 2 |

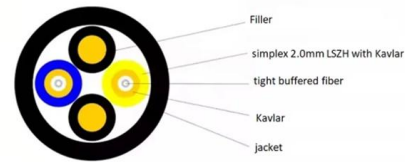
TECHNICAL SPECIFICATION FOR OUTDOOR TYPE DISTRIBUTION

manufacturer's works, packing, forwarding, supply and unloading at store/site and performance of Plot & Service junction box with all accessories for trouble free and efficient operation. This outdoor Plot &



SECONDARY ELECTRIC UNDERGROUND ENCLOSURES

Electric and Gas Service Requirements Manual (Greenbook) Purpose and Scope This document provides specifications, ordering information, illustrations, and application instructions for the various



The Meaning and Function of Primary, Secondary, and Tertiary

Designed for local control with strict safety standards, such as "one device, one circuit breaker, one residual current device, and one box." May include both fixed and portable boxes, ensuring individual

Distribution Standard

1 Introduction This Distribution Design Standard for Building Type Substations and Switching Stations contains the approved design requirements and process considerations for the design of building



Power Distribution Boxes Explained Simply

Discover the essentials of a Power Distribution Box--how it works, key types, benefits, and tips to ensure safe, efficient electrical power management.



Low voltage distribution box: weatherability standard and protection

Low voltage distribution box outdoor use requires IP65 or NEMA 4X ratings, corrosion-resistant materials, and proper sealing for lasting weather protection.



An Introduction to Exterior Electrical Power Distribution

1. INTRODUCTION This publication provides policy and guidance for design criteria and standards for electrical power and distribution systems. The information provided here must be utilized by electrical

SEC DISTRIBUTION CONSTRUCTION STANDARD

This standard is intended to assist the field engineers and technicians to achieve uniform standard in construction to ensure a satisfactory and economical level of service without operating restrictions so



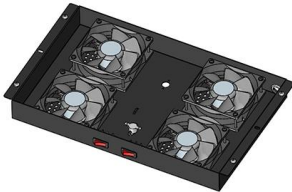
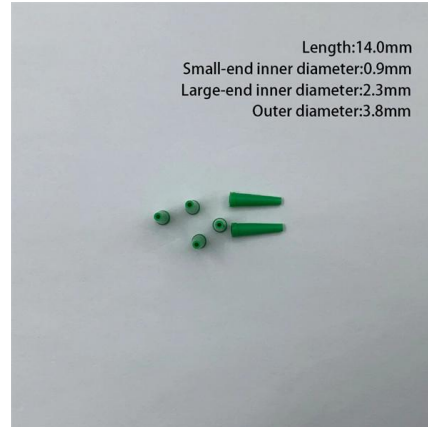
Secondary Distribution Substations; Common Clauses

1.2 This document covers the common clauses applicable to secondary distribution substations with high voltage operating voltages of 11kV and 6.6kV. It covers the design of enclosures for



56-SDMS-07C

SCOPE This SEC Distribution Material Specification requirements of design, engineering, manufacturing, inspection; testing and performance of outdoor unit substation intended to be used in



Outdoor Rated Fiber Distribution Boxes FDU's - Primus Cable

Outdoor Fiber Distribution Boxes With the changing seasons presenting new challenges for your fiber optic network to overcome, Primus Cable offers Outdoor Fiber Distribution Boxes that are designed

Outdoor Electrical Junction Box: Types & NEC Code Requirements 2025

Learn what an outdoor electrical junction box is, NEC 314 requirements, types like pull boxes and splice boxes, proper sizing



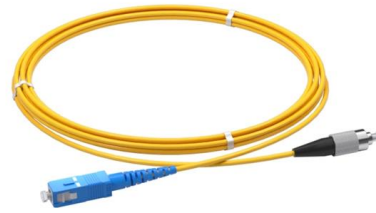
Above Grade Utility Pedestals , Snyder Industries

Snyder above grade electrical utility enclosure boxes are seamless, one-piece molded from tough, impact resistant HDPE polymer.



TECHNICAL SPECIFICATION FOR LT DISTRIBUTION BOX

KV 1. DESCRIPTION OF MATERIALS:- The L.T. Distribution Cabinets shall be installed on D.P. Structure for Plinth Mounted 33/.4 KV Substation of the ratings indicated above. These Distribution



TECHNICAL SPECIFICATION FOR OUTDOOR TYPE

The box shall be provided with an Aluminium Earth bus at the bottom, suitable for the rated short time current of the box. The earth bus shall provide Earthing to all the components inside the pillar and

Documentation and Reference Design Guide for Major Substations

ISSUE For issue to all Ausgrid and Accredited Service Providers' staff involved with the design of Ausgrid's major substations, and is for reference by field, technical and engineering staff.



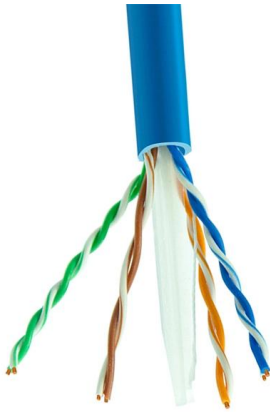
Distribution materials specification-construction standard for

Provides construction standards and specifications for materials used in underground distribution networks.



Understanding Outdoor Power Distribution Box: A

Explore the features and benefits of SX outdoor power distribution box, designed for durability, safety, and reliable power in any environment.



Substation Primary Design Standard

The primary systems are the high voltage, civil and structural and building elements. The secondary systems are the protection, communication and control, auxiliary supplies and the automation

Contact Us

For datasheets, pricing, or custom high-speed optical interconnect solutions, please visit:
<https://syropy.com.pl>