

Swiss Marker Input Output or Output



MPO-MPO Low Smoke Halogen Free Sheath

Multimode 10 Gigabit 24 pole OM3

Insertion loss <0.35dB Return loss >50dB





Swiss Marker Input Output or Output



man Bio::SeqIO::swiss (3): Swissprot sequence input/output stream

man Bio::SeqIO::swiss (3): This object can transform Bio::Seq objects to and from Swiss-Prot flat file databases. There is a lot of flexibility here about how to dump things which needs to be documented.

Comparison of the results of LLE, Hessian LLE and

Comparison of the results of LLE, Hessian LLE and ISOMAP for the Swiss roll input data.



Swiss Input-Output table 2017

The IOT2017 update (status: November 2023) concerns the following change: The balancing procedure was adapted and further developed to improve the entries of energy

DIO Tab

The Marker Out section allows assigning internal marker bits to the 4 or 8 Mark outputs on the front panel. Alternatively, the outputs can be set to static high or low values. The Digital I/O section



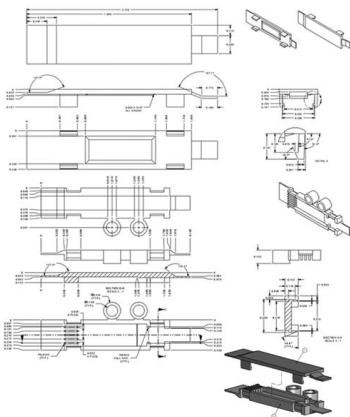
Capturing the Sectoral Performance in Swiss Economy: An Input-Output

Current study has examined the structural change phenomenon in Swiss economy by capturing the economy wide changes as a total and at sectoral level. Using the Swiss input-output two latest I-O



Examples , SWISS-MODEL

Alternative input formats can be selected using the apposite drop-down menu. A project title is automatically suggested from the information retrieved from SWISS-MODEL's own copy of the



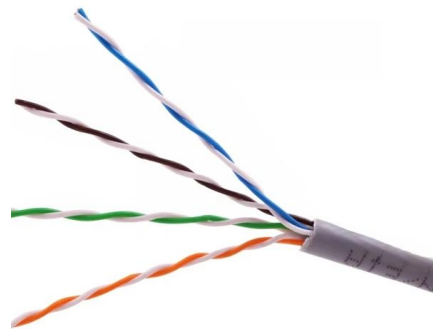
Selecting Digital Encoder Outputs

There are two important considerations when selecting the outputs of an encoder. The first is the number of output channels. The second is the electrical output characteristics of the encoder

SWISS MANAGER SHORTCUTS



Icon Meani Set up new tournament Load existing tournament 1st Save current tournament 2M All lists are output to a file Call up pairings dialogue Enter or delete new players to/from tournament



RISC OS Open: Introduction To SWIs in Library

For the OS SWIs documented on this wiki, it's generally the case that any register which isn't used as an input or an output will be preserved across the SWI call. However for some SWIs certain registers

User Guide , datalab-to/marker , DeepWiki

This guide provides comprehensive instructions for end users on how to use Marker to convert documents through its various interfaces. It covers the available user interfaces, basic



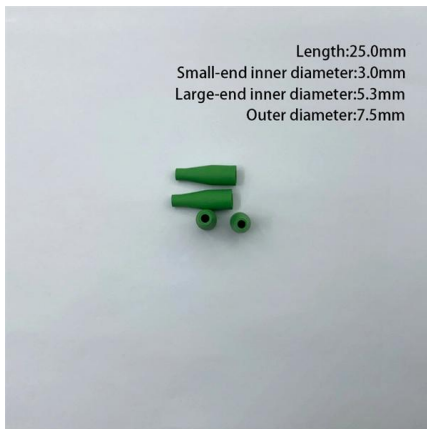
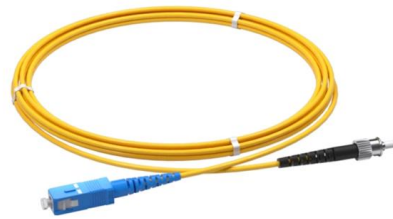
Tableau Input-Output , Office fédéral de la statistique

Les tableaux input-output (IOT) fournissent une description détaillée des flux de marchandises dans une économie et représentent donc un instrument important pour la recherche économique empirique



Estimation of a Swiss Input-Output Table for 2001

An input-output table is an accounting framework displaying the supply and use of goods and of primary inputs in an economy with a rather high level of sectoral detail.

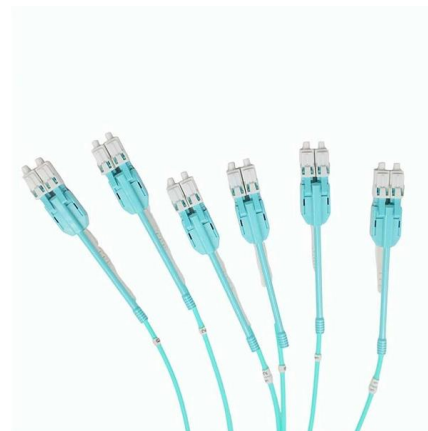


Help , SWISS-MODEL

The SWISS-MODEL Workspace The SWISS-MODEL Workspace (Waterhouse et al.) is a personal web-based working environment, where several modelling projects can be carried out in parallel. Protein

INFO: How do I receive a marker in E-Prime from an

For more information, please refer to DEVICE: How To: Synchronize E-Prime with an incoming marker/press via an Input Mask . The marker



Pandoc

The library includes separate modules for each input and output format, so adding a new input or output format just requires adding a new module. Pandoc is free software, released under the GPL.



Bio::SeqIO::swiss

A Uniprot/Swiss-Prot entry holds information on one protein sequence. If that sequence is identical across genes and species, they are all merged into one entry.

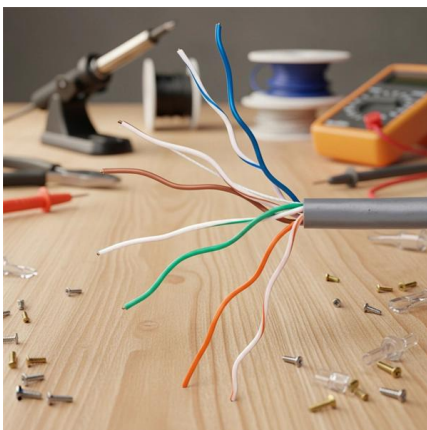


Input-Output Tables , Federal Statistical Office

Input-output tables (IOT) provide a detailed description of an economy's circular flow of goods and services and therefore constitute an important tool in empirical economic research and structural

Capturing the Sectoral Performance in Swiss Economy: An Input-Output

Current study has examined the structural change phenomenon in Swiss economy by capturing the economy wide changes as a total and at sectoral level. Using the Swiss input-output



Demand And Supply Factors In Explaining The Innovative Activity Of

Demand And Supply Factors In Explaining The Innovative Activity Of Swiss Manufacturing Firms.
* The research reported on in this paper was supported by the Swiss National Science



Estimation of a Swiss Input-Output Table for 2001

As a result of this project a new input-output table based on up-to-date data sources has been estimated, which - with few minor exceptions - is consistent with the Swiss national accounts as



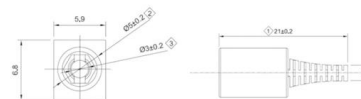
SWI-Prolog -

In particular, `Scurrent_output` accesses the current output stream and works well with `with_output_to/2`. Similarly, there are `Scurrent_input`, `Suser_output`, `Suser_error`, and `Suser_input`.



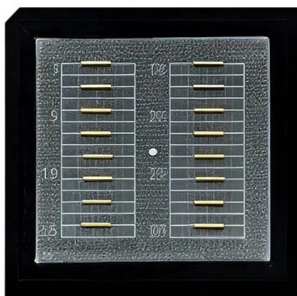
Novel Modulation Concept of the SWISS Rectifier Preventing Input

Abstract--This paper describes a new modulation concept for the uni- and bidirectional SWISS rectifier which mitigates input current distortions at the grid voltage sector boundaries. An analytical model is



% Invalid input detected at '^' marker.

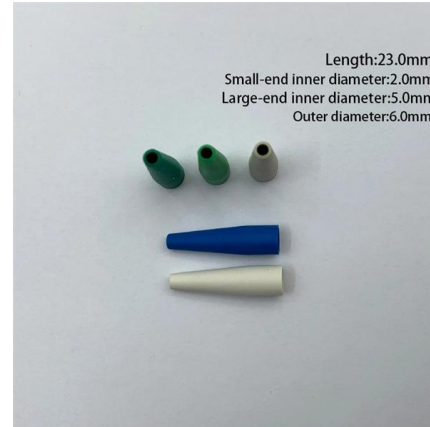
i get all the following reply: % Invalid input detected at '^' marker. when i try to enter the following comands: show sip service show sip-ua calls show sip-ua connections show sip-ua map





Swiss-Manager Manual

For normal Swiss system tournaments exists the possibility to output/print several different lists at the same time. The output can either be at the printer, or as Text-File(s) or HTML-File(s) occur.



Input-Output Tabellen , Bundesamt für Statistik

Input-Output-Tabellen (IOT) dienen einer detaillierten Beschreibung des Güterkreislaufes einer Volkswirtschaft und stellen damit ein wichtiges Instrument zur empirischen Wirtschaftsforschung

Contact Us

For datasheets, pricing, or custom high-speed optical interconnect solutions, please visit:
<https://syropy.com.pl>