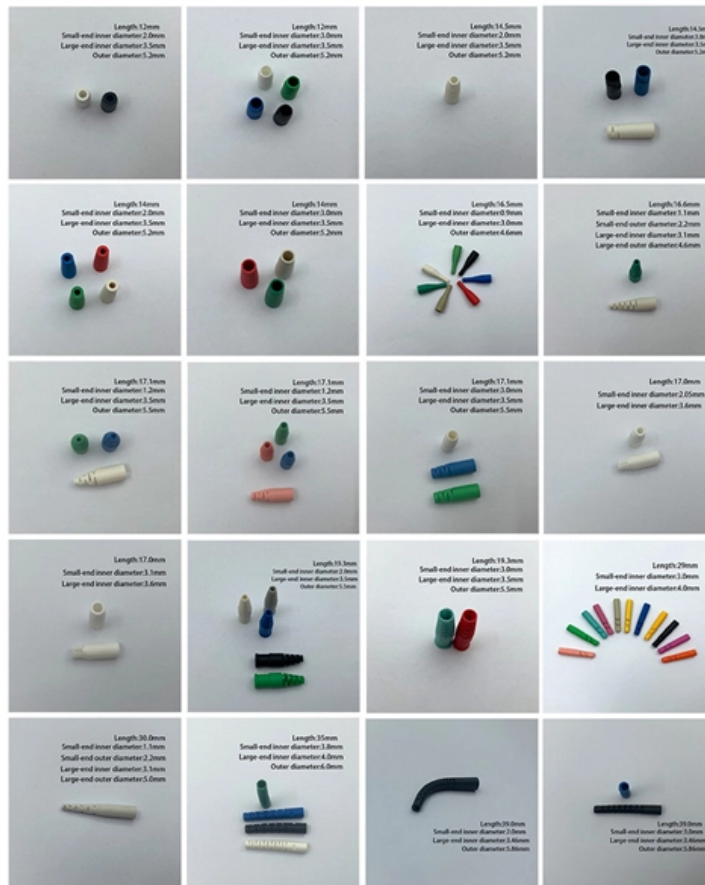


Switches are core devices in local area networks





Overview

The Switch is a network device that is used to segment the networks into different subnetworks called subnets or LAN segments. It is responsible for filtering and forwarding the packets between LAN segments based on MAC address. It operates at the data link layer of the OSI model and ensures seamless communication between devices by forwarding data packets.



Switches are core devices in local area networks



What is a Network Switch? How it Works and Types

A network switch connects devices in a network to each other, enabling them to talk by exchanging data packets. Switches can be hardware

How LAN Switches Work?

Network Switches and Hubs: A local area network, also called a LAN, has a central connection point for devices called a network hub. Hub-based

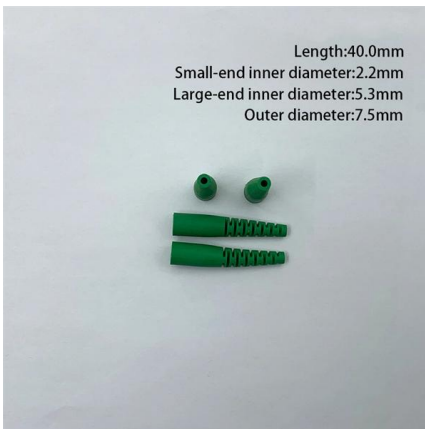


Different Types of Network Switches

A network switch is a vital component of a computer network that connects multiple devices, like computers, printers, and servers, within a local area network (LAN).

LAN Definition

A Local Area Network (LAN), is a network of interconnected switches and access points that support computers and IoT devices located within a limited geographic



LinkedIn

Hier sollte eine Beschreibung angezeigt werden, diese Seite lässt dies jedoch nicht zu.

LAN Network: how it works and key components

Learn how a LAN network functions, its key components, and best practices for setting up a local area network in homes or businesses.



Network Components Explained: Understanding

Learn the 3 core network components--switches, routers, and firewalls. Understand how they work together for exams, troubleshooting, and



Different Types of Network Switches

Network switches are essential for the smooth functioning of local area networks (LANs) in small businesses. They connect devices within the office network,



What Is a Network Switch? , How Do Network Switches Work? , Akamai

Simple switches connect devices on a single local area network (LAN), while more advanced switches may connect devices from multiple LANs and incorporate data security functions. Switches typically

What is a LAN? Local Area Network

A local area network or LAN is comprised of cables, access points, switches, routers and other components that when connected in an office building, school or home



What Is a Network Switch? , phoenixNAP IT Glossary

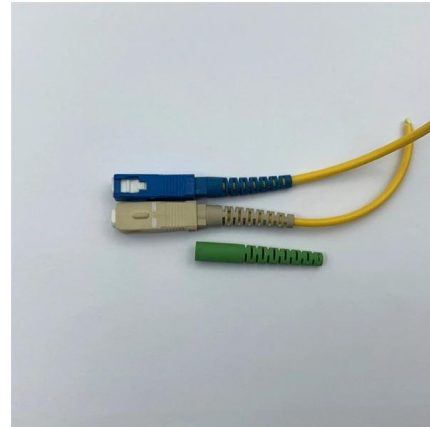
Glossary » N » What Is a Network Switch?
Network switches are essential computer networking devices connecting multiple devices within a local





HMS Networks

HMS creates products that enable industrial equipment to communicate and share information with software and systems. In short: Hardware Meets Software(TM).



What is a Network Switch and How Does it Work?

How Does a Network Switch Works? When the source wants to send the data packet to the destination, the packet first enters the switch and the

What is a Network Switch? , Explained Working, Types

Business Networks: Switches form the backbone of local area networks (LANs) in office environments. They connect computers, servers, printers, and other



Core Switch vs. Distribution Switch vs. Access Switch

What is a Core Switch? A core switch is the primary switch installed at the backbone of a layered or hierarchical network. These data switches are responsible for



Exploring LAN Components: Key Elements of Local Area Networks

Core Components of a Local Area Network
Switches Function: Switches are central networking devices that connect devices in a LAN. They receive incoming data packets and redirect them to their

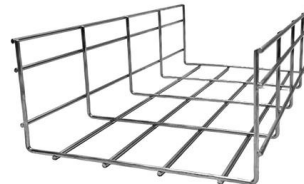


What is LAN (Local Area Network)? Understanding

In conclusion, a Local Area Network (LAN) is an essential technology that connects devices within a limited area, allowing for fast, efficient, and secure

What Is a Storage Area Network? SAN Explained

A storage area network (SAN) is a dedicated high-speed network or subnetwork that interconnects and presents shared pools of storage devices to



What is a network switch? , Switch vs. router

A network switch forwards data between devices, unlike routers, which forward data between networks. Learn about Ethernet switches, managed switches, and more.



Demystifying Ethernet Switches: Key Concepts

At their core, Ethernet switches keep data moving in a computer network by using packet switching to send information where it needs to go. They



Understanding Switches in Computer Networks: Functions, Types,

A switch in computer networks is a piece of networking hardware that connects devices in a local area network (LAN). Its primary job is to receive incoming data packets and forward them to the

What Is a Network Switch? , How Do Network Switches Work? , Akamai

A network switch is a technology that allows two or more IT devices such as computers to communicate with each other, forming a communications network. Switches enable devices on the network to



Network Switches: Connecting Devices in a Local Area Network (LAN)

A network switch is a device that connects multiple devices, such as computers, servers, printers, and other hardware, within a Local Area Network (LAN). Unlike a router, which connects different



What are the main components of a Local Area Network (LAN)?

The main components of a Local Area Network (LAN) are computers, network devices, cables, switches, routers, and a server. A Local Area Network (LAN) is a group of computers and other devices that



How LAN Switches Work?

A LAN switch is a switch that provides unique connectivity to each node in an organization's internal network. Essentially, a LAN switch sets up a

What is a Network Switch? How it Works and Types

What is a network switch? A network switch connects devices in a network to each other, enabling them to talk by exchanging data packets.



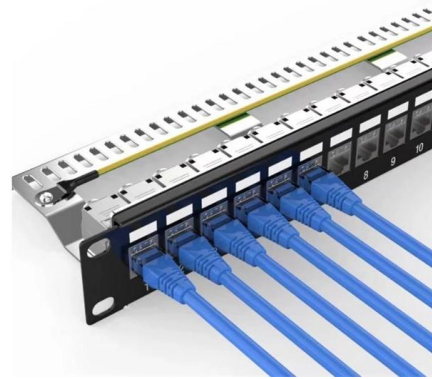
Common Types of Network Devices and Their Functions

Common types of network devices include repeater, hub, bridge, switch, routers, gateway, brouter & network interface card. Learn more about



What is a network switch? , Switch vs. router

A network switch connects devices within a network (often a local area network, or LAN *) and forwards data packets to and from those devices. Unlike a router, a



Network Switch Components and Technical Analysis

A Network Switch is one of the essential devices for building modern networks, capable of enhancing network performance and reliability, providing stable and efficient data transmission services for

Contact Us

For datasheets, pricing, or custom high-speed optical interconnect solutions, please visit:
<https://syropy.com.pl>