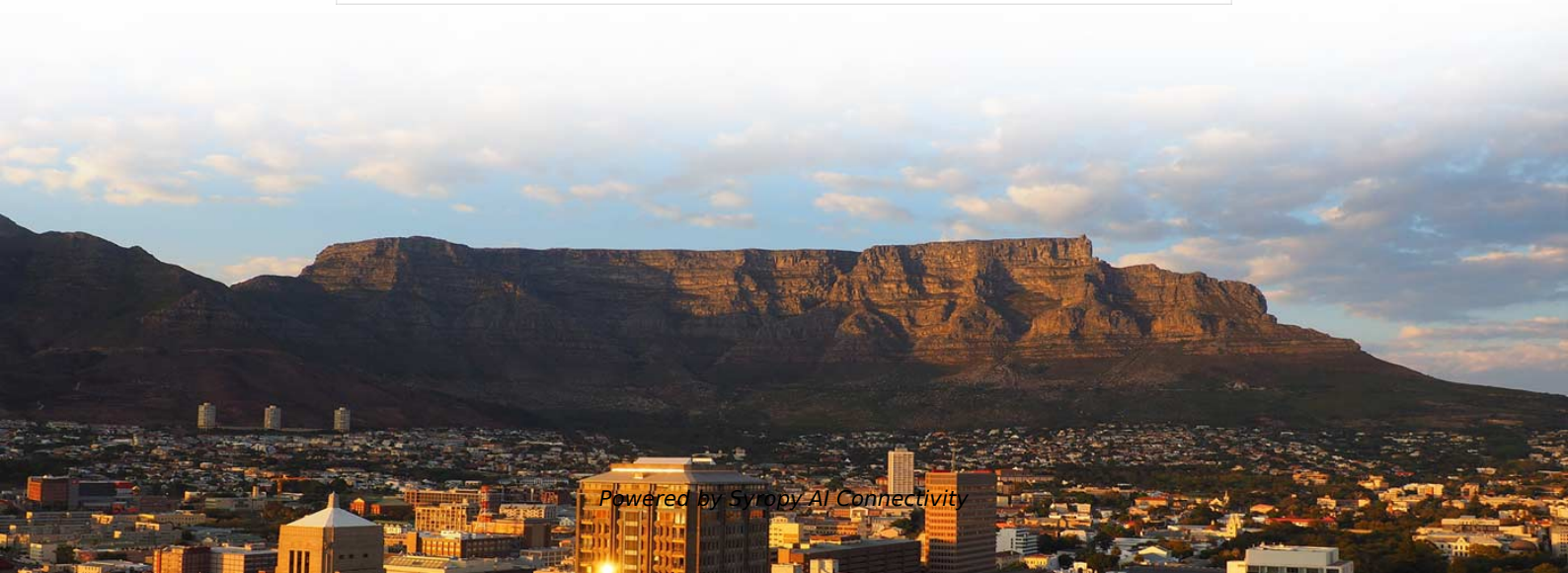


The Role of Small Busbar Resistance



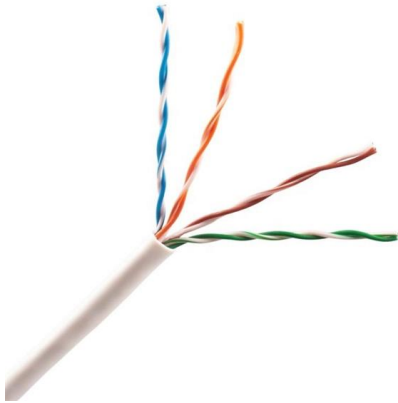


Overview

In battery packs for electric mobility, a busbar is used to connect battery cells or modules. The IEC standard for busbar contact resistance plays a vital role in ensuring electrical safety, performance, and longevity of electrical systems. Voltage drop is well known to electrical engineers and is defined by Ohm's Law and the simplest of equations: $V = I \times R$. This "simple" assembly of copper sheets is intended to link several points of the structure, and to stay as equipotential as possible.



The Role of Small Busbar Resistance

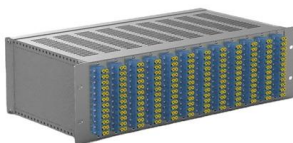


Busbar design application note

The user must control the busbar resistance and makes sure that in the worst case current condition, the drop is not higher than 0.3 V. If it is not possible, this option cannot be used.

IEC Standard for Busbar Contact Resistance

The IEC standard for busbar contact resistance plays a vital role in ensuring electrical safety, performance, and longevity of electrical systems. In power distribution networks, busbars are



What is a PCB Busbar? A Guide for Power Electronics

Learn about PCB busbars: types, functions, design tips, and why MV Flex Circuit is your trusted manufacturer for high-power projects.

Understanding Busbars: The Backbone Of Electrical Power

Additionally, busbars improve the reliability and safety of electrical systems by ensuring even distribution of power and reducing the risk of overheating or electrical faults. Their role in modern electrical



What Is a Bus Bar in Electrical Engineering? Full Guide

What Is a Bus Bar in Electrical Systems? A bus bar (also spelled busbar) is a metallic strip or bar used in electrical power distribution to conduct electricity



Busbars are simple in principle, complicated in practice:

Physically small bus bars are often used between PC boards and even within boards to carry power to various subassemblies and subsections.



Bus Bar Theory of Operation

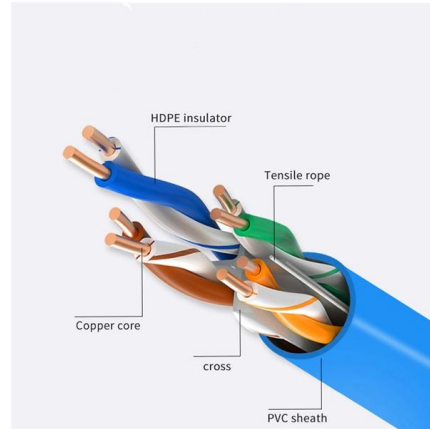
Figure 1 shows the alternate approach using two DRV425 devices. When a cutout (hole or slot) is placed in the center of the bus bar, the current is split in two equal parts. Each side of the cutout will



Effective resistance of busbars



While many busbars are custom-shaped and sized to fit the unique needs of the application, there are also smaller busbars that are used directly



Busbar Design: How to Spare Nanohenries

The role of a busbar is to link several points of a power electronics converter: capacitors, semiconductors, and often to achieve series or parallel association of these devices. The very

Factors affecting Busbar performance: Detailed

Busbar plays an important role in the electrical system, directly affecting the performance and reliability of the system. Choosing the right



Multi-busbar solar cells: High performance with low

Multi busbar can aid in decreasing the total series resistance of the interconnected solar cells. Perpendicular to busbars is the metallic and thin grid



Bus bars are simple in principle, complicated in practice:

Not every design needs large bus bars; some only need smaller, localized ones or PC board-mounted bus bars. This part looks at these situations,



Bus Bar Theory of Operation

When a cutout (hole or slot) is placed in the center of the bus bar, the current is split in two equal parts. Each side of the cutout will generate magnetic field gradients that oppose one another inside the cutout.

Google

Checking your browser before accessing undefined Click here if you are not automatically redirected after 5 seconds. Checking your browser - reCAPTCHA



Electrical Busbar

Tubular-shaped busbars provide good ventilation and mechanical resistance. High cost is the most significant disadvantage. Its installation is



What Are Electrical Busbars? A Complete Guide to

Electrical busbars offer a low-resistance path for current flow, significantly reducing energy loss compared to traditional cabling. This enhanced



Busbar design application note

1.1 Definition of a busbar In battery packs for electric mobility, a busbar is used to connect battery cells or modules. In automotive battery packs, busbars are used to connect battery modules together.

Effective Resistance Of Busbars

Effective Resistance Of Busbars By Edvard Csanyi Last updated on June 15th, 2013 ? PDF (Premium) Home / Technical Articles / Effective Resistance



What Is a Busbar: Types, Applications, & Simulation

A thicker busbar has lower resistance, which reduces ohmic losses. Simulating ohmic losses in busbars can help optimize their design and



The Ultimate Guide to Electrical Busbars [May 2026]

Discover everything about electrical busbars--types, materials, advantages, and applications. Simplify power distribution with efficient, safe, and

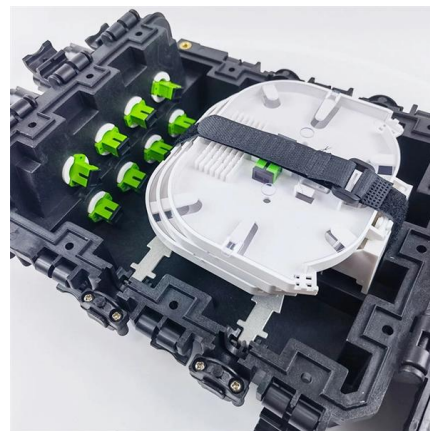


Factors affecting Busbar performance: Detailed

1. Factors affecting the performance of Busbar
Busbar plays a key role in the power system, especially in solar power systems, responsible for

Busbar Basics: Understanding the Fundamentals of Electrical

Busbar Basics: Understanding the Fundamentals of Electrical Power Distribution Introduction: In electrical power distribution systems, busbars play a fundamental role as essential components for



LoRawan outdoor base station



What Is Bus Bar in Electrical Power System?

Role and Importance of Busbars in Power Systems 1. Power Distribution When considering the design of a power grid, it's essential to ask,



Busbar Design: How to Spare Nanohenries

The aim of this paper is to start from the most basic busbar, a simple sheet, and to show the various impacts of a change in the geometry, on both current repartition in the plate, and impedance of the



Busbars: Essential Components in Electrical Systems

Explore the essential role of busbars in electrical systems. Learn about traditional and laminated busbars and their benefits.



Contact Us

For datasheets, pricing, or custom high-speed optical interconnect solutions, please visit:
<https://syropy.com.pl>