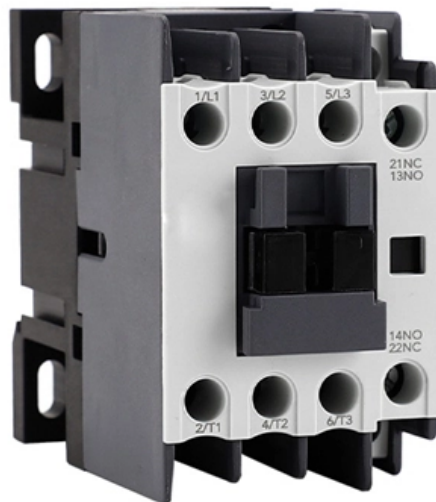


# **The door to the construction site s electrical distribution box was open**





## Overview

---

If you see an open or damaged transformer or cubicle utility box, call or report it immediately using the form below. Underground or stand-alone distribution box (may also have a streetlight attached). This guidance is aimed at those responsible for planning and subsequent management, and those who control the installation and use of electrical systems and equipment on construction sites. Order this product from HSE Books It explains what to do to reduce the risk of accidents involving. Using the types of distributor described in the equipment standards, it is possible to set up a power supply. We're talking about a fundamental duty to prevent serious injuries and even death.



## The door to the construction site s electrical distribution box was o

---

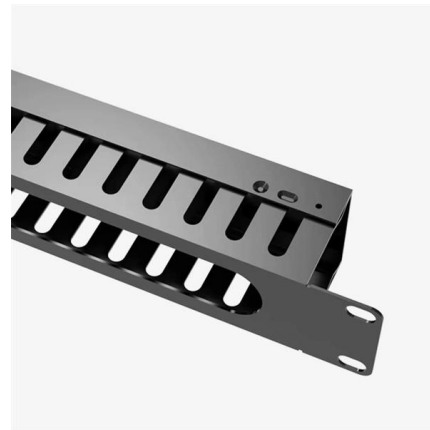


### What is the Internal Structure of The Distribution Box

Learn about the internal structure of a distribution box, its components, functions, and key types. Understand its role in electrical systems

### Temporary Electrical Supply HSE Procedure For

Below procedure will help you to establish a safe standard for the installation of temporary and permanent electrical fixtures/appliances on project sites.



### Electrical safety on construction sites

56 Temporary electrical distribution systems may be needed on construction sites. Their temporary status does not mean that lower standards are acceptable as these systems are likely to be

### DB BOX (Electrical Distribution Box): Everything You

Conclusion Selecting the right Electrical Distribution Box is vital for ensuring the safety and efficiency of any electrical system. Whether your project



### **Safety in electrical panels and switchboards**

Introduction Safety in electrical panels and switchboards is a critical concern in the Health, Safety, and Environment (HSE) domain. These components are the heart

### **Temporary electrical wiring for construction sites**

Temporary for construction Construction work requires electrical power for many purposes. However, exposure to weather, frequent relocation, rough use and other conditions not normally encountered



### **Key Points Of Installation And Collocation Of Distribution Box In**

7. The wire inlets and outlets in the distribution box and switch box shall be set at the lower bottom of the box. It is strictly prohibited to set them at the top, side, back or door of the box. The inlets and outlets



### info sheet on testing electrical distribution boards

Secondly it prevents unlicensed persons from opening the electrical distribution boards. LOAD LEVEL & THERMOGRAPHY TESTING Load Level & thermography testing is carried out on distribution



### How To Get Temporary Power for Your Construction

Working on a project in a remote location with no access to electricity? Here are 7 steps you can take to get temporary power for a construction site.

### Electrical Safety for Building and Construction Workers

- o Know the location of underground cables and overhead powerlines and their proximity to your work activities and worksite transit routes before commencing digging or any other activities.
- o Install



### Electrical Safety Guidelines for Construction

The document provides advice on planning electrical work, establishing a safe temporary distribution system, using equipment safely, inspection and



### Electrical sub-boards (distribution boards)

The power was not isolated and the door to the live sub-board was left open. A worker in the vicinity, in answering a mobile phone call, lost concentration and



### Construction site electrical enclosure

Find your construction site electrical enclosure easily amongst the 25 products from the leading brands (HLC, WALTHER WERKE, DIGITAL ELECTRIC, ) on

### Electrical Safety Toolbox Talk for the Construction Site

A toolbox talk to guide you in your discussions about electrical safety on the construction site. Download the PDF for free.



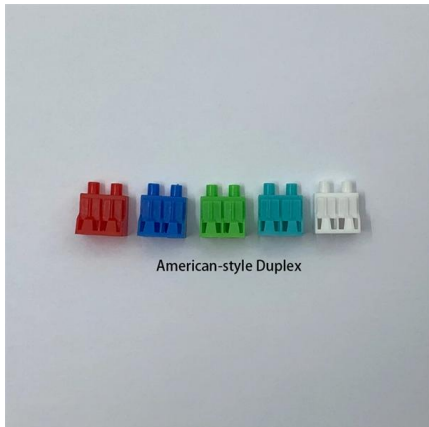
### Distribution Box Installation: A Complete Guide to Safe

Proper installation of a distribution box ensures electrical safety, efficiency, and reliability. In this comprehensive guide, we'll cover everything you need to know



## A Guide To Electrical Safety On Construction Sites

From making absolutely certain a circuit is dead before you touch it to managing the tools you use every day, these steps are the heart of practical electrical safety on construction sites.



### Safety requirements of distribution box

The distribution box has the characteristics of small size, simple installation, special technical performance, fixed location, unique configuration function, not limited by

### The installation requirements for the distribution box

A distribution box is the heart of any electrical system. It takes the incoming power and safely distributes it to different circuits throughout your



### Electrical

Electrical hazards are addressed in specific standards for the construction industry. For additional information on general industry regulations, see the general industry regulations section. Visit the



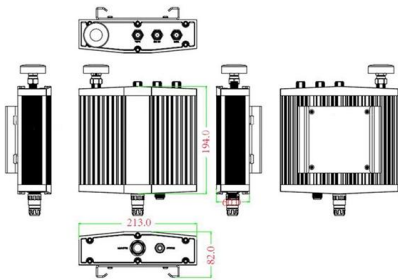


### 480V Electrical Enclosure Doors Open While Energized

A couple times now we've been told that we can leave the doors open on 480V supplied electrical enclosures because the AC units have failed and high temperatures will cause something



Mechanical drawing



### Electrical Safety On Construction Sites - Toolbox Talk 7

Electrical Safety On Construction Sites - Toolbox Talk 7 Electric shock, and too often fatalities, occur on construction jobsites when temporary power systems are in use. All construction workers who

### Safety Around Electrical Boxes and Infrastructure

Electrical boxes, power lines, and substations are important parts of our distribution infrastructure. Learn about them and how to report open or damaged electrical equipment.



### A Guide To Electrical Safety On Construction Sites

Master electrical safety on construction sites with this essential UK guide. Learn to identify hazards, comply with regulations, and protect your team.



**Electricity**

What You Need to Do  
 What You Need to Know  
 Managing Electrical Risk During Refurbishment Work  
 Controlling Risk to Electricians  
 About three workers are electrocuted each year during refurbishment work on commercial and domestic buildings. Further deaths occur in incidents involving overhead power lines and underground electric cables. Incidents within buildings involve both qualified electricians and other trades people. They happen when people are working on or close to eq  
 See more on [hse.gov.uk](http://hse.gov.uk)  
 Elektra Tailfingen



**CURRENT DISTRIBUTORS**

In the case of connection distributors connection fuses and main fuses are accessible via unlosable flip-up covers attached to the housing, which catch automatically in the open position. These covers do



**Construction Site Temporary Supply , 110V Guide UK , Elec-Mate**

Construction Site Temporary Supply: The Complete 110V Guide for UK Sites  
 Construction site temporary installations must use 110V CTE for portable tools, IP-rated distribution

**Understanding Distribution Boxes: A Comprehensive Guide**

A distribution box, also known as a power distribution box or electrical distribution box, is used to distribute electrical power safely to multiple



**Electrical Installations On Construction**



## Sites

Practical guidance Electrical hazards are a major cause of death and serious injury on construction sites. This industry standard provides practical



## Contact Us

---

For datasheets, pricing, or custom high-speed optical interconnect solutions, please visit:  
<https://syropy.com.pl>