

The inlet of the distribution box should be located in the box





Overview

Distribution boxes are typically made of reinforced concrete with plumbing "knock outs" into the box. The inlet must be higher than the outlets, with all outlets at the same level. It takes the incoming power and safely distributes it to different circuits throughout your building. The design of a distribution box is relatively straightforward, but its functionality is critical. If they need to be placed outdoors, especially in high humidity, you must ensure their waterproofness.



The inlet of the distribution box should be located in the box



Septic Tanks, Distribution Boxes, and Chamber Leaching Systems

Distribution boxes are typically made of reinforced concrete with plumbing "knock outs" into the box. The inlet must be higher than the outlets, with all outlets at the same level. The box must be large enough

What Is an Electrical Distribution Box? A Complete Guide

What Is an Electrical Distribution Box? An electrical distribution box serves as a centralized unit for distributing electrical power within



Comprehensive Guide to Installing a Septic Distribution Box

Learn how to install a septic distribution box with step-by-step instructions, tips, and essential maintenance advice.



Distribution Boxes: Types and Functions

Learn what an electrical distribution box (DB/distribution board) is, its main components (MCB/RCCB/RCBO, SPD, busbar) and common types.



Requirements And Specifications For Installation Of

The distribution box should be installed in an area close to the power supply to reduce power loss and ensure safety. Avoid installing in a humid and



Installation points of household distribution box

The distribution box of household distribution box should not be installed too high. Generally, the installation elevation is 1.8m to facilitate operation; the electric pipe



Comprehensive Guide to Septic System Distribution Box

Inlet and Outlet Configuration: The inlet pipe is usually centrally located, while the outlet pipes are evenly spaced on either side to facilitate equal





Distribution Box Installation: A Complete Guide to Safe

Proper installation of a distribution box ensures electrical safety, efficiency, and reliability. In this comprehensive guide, we'll cover everything you need to know



How to Install a Distribution Box--A Comprehensive

The ideal location to install electrical distribution boxes should keep a distance from water, flammable and explosive substances and corrosive

Requirements And Specifications For Installation Of

In flammable and explosive environments, explosion-proof distribution boxes should be selected and explosion-proof treatment should be carried out.



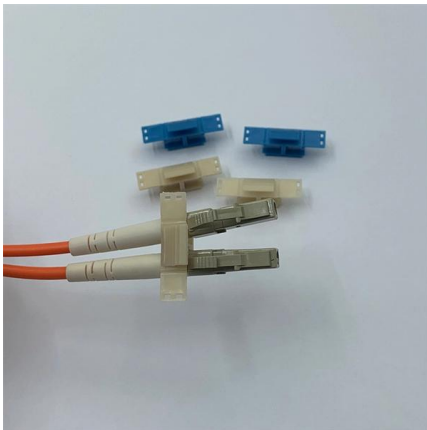
Understanding Distribution Boxes:A Comprehensive Guide

A distribution boxes is an essential device that manages the safe and efficient flow of electrical power throughout different areas of a building or facility.



Septic distribution line & D box design specifications

(1) Distribution Box Design Specifications - the D-Box Specs (i) For accessibility, it is necessary that the distribution box be located and have a removable cover not more than 12 inches below grade.

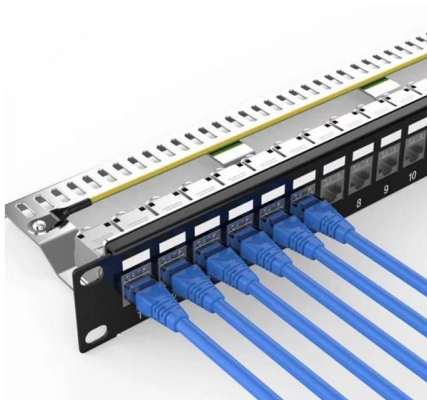


Generator Inlet Box Location per electrical code

I'm installing an inlet box for a generator on my property. My transfer switch and main circuit panel are indoors, in my basement utility room. There are numerous other utilities that all enter

How Does a Power Distribution Box Work

Learn how a power distribution box works step by step--from incoming power to circuit protection and smart monitoring--for safe, efficient electricity delivery.



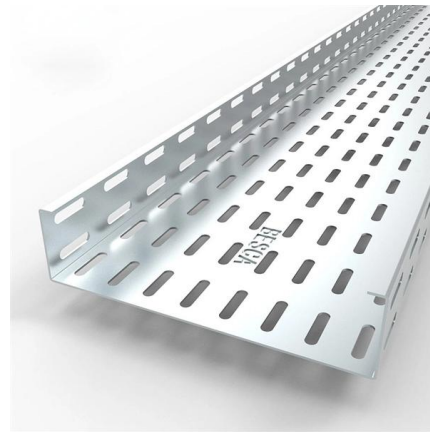
Power Distribution Boxes Explained Simply

Learn what a power distribution box is, how it works, key components, types, and why it's vital for safe and efficient electrical systems.

Installing D-Boxes - SOWMA



Distribution boxes are constructed with an inlet at the highest elevation and multiple outlets at a single lower elevation. In theory, the box will then distribute the effluent equally between trenches.



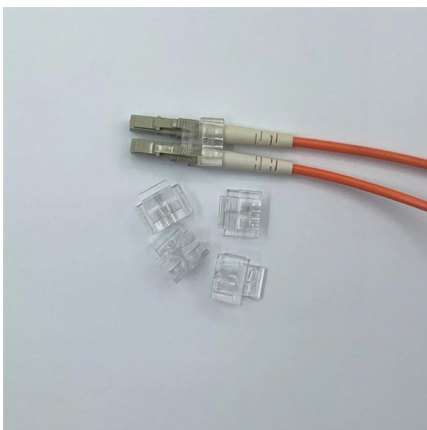
How to Install a Distribution Box--A Comprehensive

Before starting the installation, finding a proper place for putting the distribution box is crucial, because it largely decides the safety and convenience



What is a Distribution Box? - A Comprehensive Guide

A distribution box organizes and controls power flow, ensuring safety and efficiency in electrical systems.



What Is a Distribution Box?

If you're going to buy a distribution box, there are several things you should look for. You should choose a distribution box that's made of a durable



Distribution Boxes Explained: Types, Functions, and

Learn about distribution boxes, their types, functions, and safety features to ensure efficient and secure electrical power distribution in any building.



Power Distribution Boxes Explained Simply

Discover the essentials of a Power Distribution Box--how it works, key types, benefits, and tips to ensure safe, efficient electrical power management.

Key Points Of Installation And Collocation Of Distribution Box In

The wire inlets and outlets in the distribution box and switch box shall be set at the lower bottom of the box. It is strictly prohibited to set them at the top, side, back or door of the box.



What is a Septic Distribution Box: A Clear Explanation

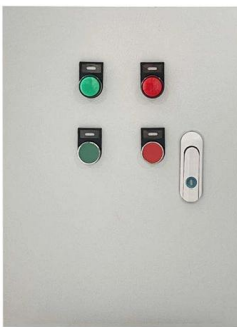
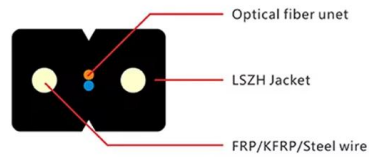
The distribution box, also known as the D-box, is a junction box positioned

The purpose, working principle, and usage



instructions

The power distribution box and lighting distribution box should be set separately. (4) All electrical equipment on the construction site must have their



What is the Internal Structure of The Distribution Box

Learn about the internal structure of a distribution box, its components, functions, and key types. Understand its role in electrical systems

The Complete Guide to Septic Tank Distribution Boxes ,

The distribution box serves to evenly divide and distribute the effluent exiting the septic tank to the entire drain field. When wastewater enters the box



Contact Us

For datasheets, pricing, or custom high-speed optical interconnect solutions, please visit:
<https://syropy.com.pl>