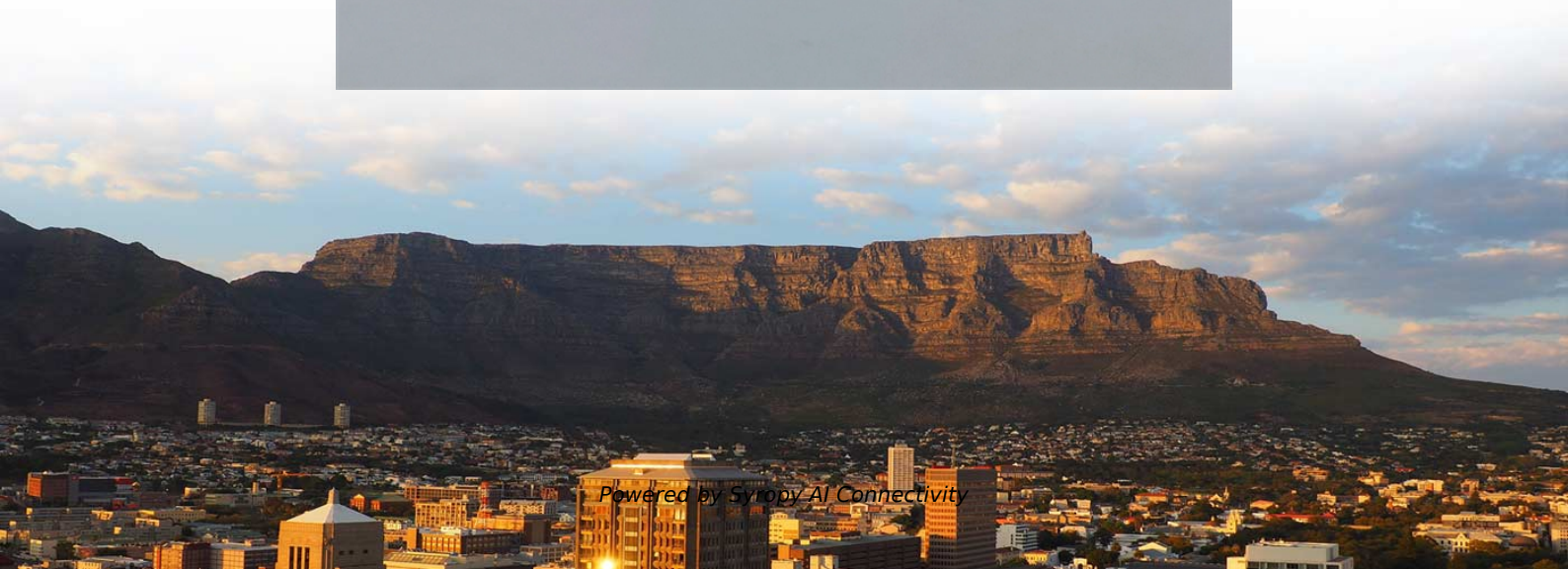
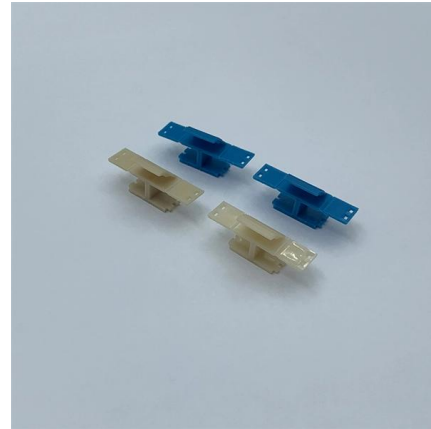


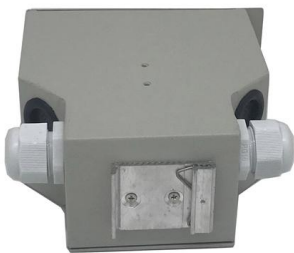
Two-optical-four-electric photoelectric conversion optical module





Fundamentals of an Optical Module

As an important part of fiber-optic communication, an optical module is a photoelectric converter which converts electrical signals into optical signals and vice versa. An optical module works at the physical



Precise measurement techniques for optical-to-electric conversion

Optical-to-electric (OE) conversion devices such as photo-detectors, photo-receivers, etc. play important roles in optical fiber systems. Recently, multi-level modulation formats are commonly



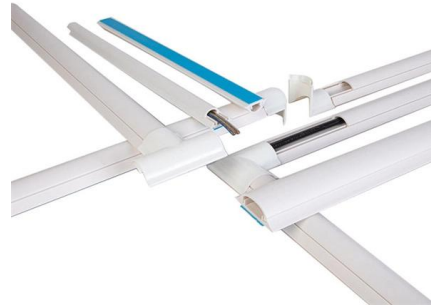
Metamaterials-Based Photoelectric Conversion: From

Abstract Photoelectric conversion (PC) is an essential process for the devices based on the utilization of electrical signals, such as solar cells, sensors,



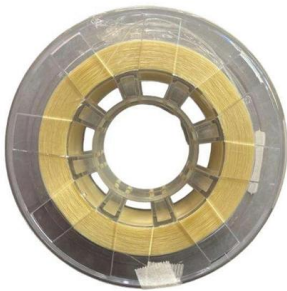
Comprehensive Guide to Photoelectric Sensors

Photoelectric sensors play an important role in numerous detection systems, converting optical signals into electrical signals through the photoelectric effect. This conversion is important in various



Photoelectric conversion optical transceiver module

It has four high-speed differential signal channels, each with a transmission speed of 25Gbps, and is mainly used for high-speed interconnections between core



PHOTOELECTRIC CONVERSION ELEMENT, OPTICAL SENSOR,

In the two-dimensional sensor, the photoelectric conversion element of the present invention functions as the imaging element by converting the optical image information into the electric signal by imaging



RF photoelectric conversion module

Functional overview RF optical transmission module mainly achieve 10MHz ~ 500MHz, 500MHz ~ 1GHz, 1GHz ~ 2GHz RF signal transmission by fiber. The product consists of a RF optical emission



OPTICAL-TO-ELECTRICAL POWER CONVERSION AND DATA TRANSMISSION MODULE

The 1 x 10 integrated optics coupler and the 10-cell photovoltaic array were custom designed and -processed for the optical-to-electrical power converter module.

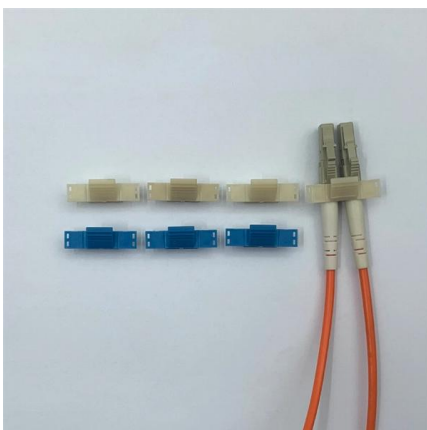


Metamaterials-Based Photoelectric Conversion: From

Hence, this review covers major advances in the aspects of fundamentals and engineering for the MMs-based photoelectric devices from

Advancing Optical Modules for Data Traffic with MPS

The optical module is the foundation of optical communication that provides photoelectric conversion (see Figure 2). It receives the optical signal transmitted



Develops Two New Products of LIGHTPASS® Series for

These two products are part of the LIGHTPASS® Series active optical modules expected to be used for optical interconnection applications and IOWN*

A Multicolor Artificial Sensing System with



With perceiving and converting mechanical stimuli into electrical and visual readouts simultaneously, electronic skin endows a safe and effective interaction between human and



The Fundamentals of Photoelectric Sensors

A photoelectric sensor is a device that detects a change in light intensity. Typically, this means either non-detection or detection of the sensor's emitted light source. The type of light and method by which

TECHNICAL GUIDE FOR PHOTOELECTRIC SENSORS

Beam receiver The receiver uses a photoelectric conversion device, such as a photo transistor, to detect the beam from the emitter through an optical system (lens).



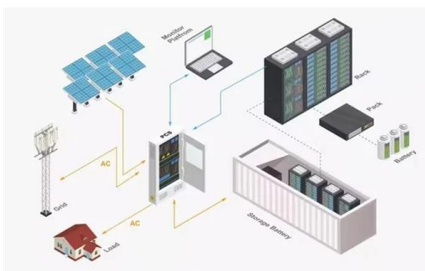
US9470864B1

In this invention, a photoelectric conversion module is proposed. The photoelectric conversion module comprises two parts, optical layer and electrical layer.



Develops Two New Products of LIGHTPASS® Series for

I-PEX's corporate website provides information about news "Develops Two New Products of LIGHTPASS® Series for Active Optical Module Products

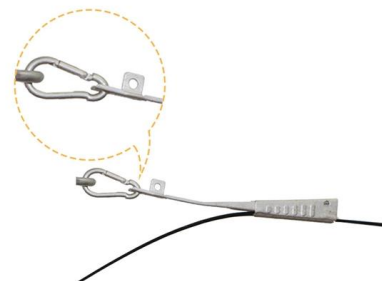


800G Transceiver: A Data Transmission Photoelectric

800G Transceiver acts as a vital photoelectric conversion node for data transmission, enabling efficient and reliable communication. This article will

A co-packaged photoelectric converter module

In this paper, we introduced an ultra-compact photoelectric converter array module fabricated with hybrid-integration microassembly process, the practical test results showed a good optical coupling



Basis of Photoelectric Detection Technology

Optical communication technology is the main way of modern communication, and the photoelectric detection device is the key component to realize the conversion of optical signals and



US8669515B2

A photoelectric conversion module includes a transmission side photoelectric conversion part for converting an electrical signal into an optical signal, a transmission side circuit board on which the



Product Catalog



RF photoelectric conversion module - 2GHz ~ 18GHz

RF photoelectric conversion module - 2GHz ~ 18GHz external-modulated temperature-controlled wideband The RF optical transmission module mainly

800G Optical Module: A Data Transmission

800G optical module acts as a vital photoelectric conversion node for data transmission, enabling efficient and reliable communication. This article will take



Contact Us

For datasheets, pricing, or custom high-speed optical interconnect solutions, please visit:
<https://syropy.com.pl>