

View device information via Huijue GPON





View device information via Huijue GPON

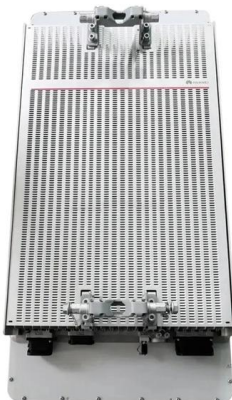


Example for Connecting an AP to a GPON Network

A GPON network consists of optical line terminals (OLTs), optical distribution networks (ODNs), and optical network units (ONUs). The OLT is an aggregation device located at the central

GPON-ONU-34-20BI Configuration Guide

1. Hardware connection GPON-ONU-34-20BI plug in the Host device's GE fiber port convert GE uplink to GPON uplink and support 1GE/2.5GE rate

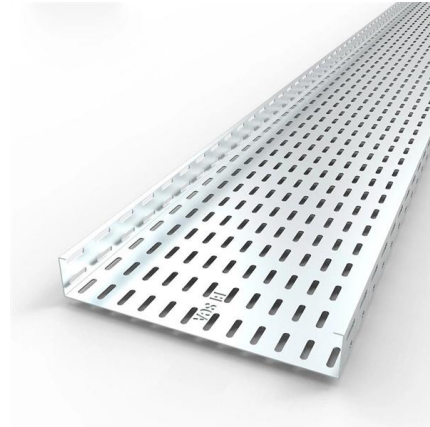


HG8245Q2 GPON Terminal User Manual Huawei Technologies

To use the device properly and safely, read the safety precautions carefully before using the device and strictly observe these precautions when using the device.

ONT Device Configuration, Cisco Catalyst PON Series Switches

ONT Information Management Configuration
Example: Monitoring Information Management
The following example shows how to view ONT description: Device> enable Device#



User Guide

Introduction FiberVU for Huawei GPON systems ("FiberVU") is a service-oriented management and provisioning software tool which can configure and maintain internet and voice services for GPON

PON Device Management

PON Device Management provides resource management and service planning. It allows you to view the resources and statuses of PON devices and manage the devices. In addition, it allows you to



Displaying the Device Serial Number

Procedure Run the display esn command to view the serial number of a device. Run the display device manufacture-info [slot slot-id] command to view manufacturing information about the



PON Interface Configuration Commands

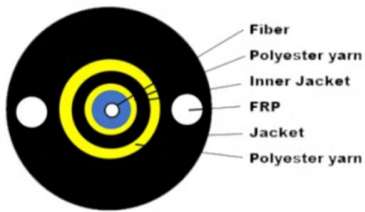


You can use this command to view attributes of a GPON interface, including the optical network unit (ONU) ID, serial number (SN), password, link status, registration status, Physical Layer



Huawei MA56xx OLT Command Lists

Huawei MA56xx OLT Command Lists: View the current OLT version & patch: display board 0
display version display current-configuration
display time



HUAWEI ECHOLIFE HG8245 QUICK START MANUAL

View and Download Huawei EchoLife HG8245 quick start manual online. GPON Terminal. EchoLife HG8245 network router pdf manual download.



GPON OLT CLI USER MANUAL

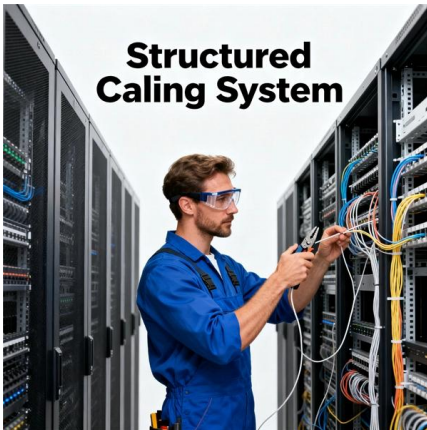
1. Access OLT You can access OLT by CLI (Command Line Interface) via console cable or





Device details

View the device list To view devices, tap Devices at the bottom of the home screen or tap Devices on the home screen. In the Connected tab, the list of devices



How to manage the devices connected to a Huawei router

Devices connected via a network cable will not include the Allow option. Therefore, you will not be able to block such devices. If you have enabled the trustlist mode,

PON Management

eSight provides the GPON management function to help users know the network architecture of the GPON access network and node status, and implement GPON network troubleshooting.



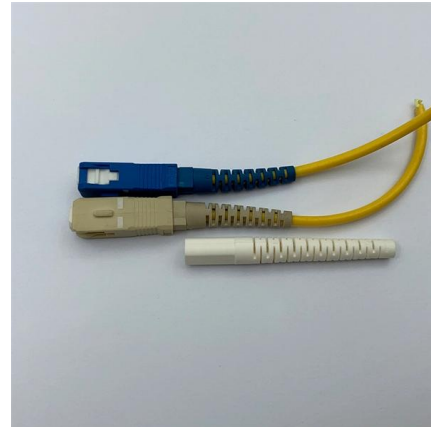
Huawei GPON configuration in Splynx

In this article, you can find helpful commands that can be used for the configuration of Huawei MA5800-X7 GPON from within Splynx.



GPON - Basic Command OLT ZTE

Nowadays, many people so familiar about GPON. GPON is a next generation for Broadband Technologies from copper into optical connection. so GPON is better from previous



PON Interface Diagnostic Commands

Usage Guidelines You can run the display load info command to view the MAC address of the EPON interface and the SN value of the GPON interface.

PON Device Management

View information about basic device configuration tasks, including the task names, device names, device IP addresses, task types, ZTP policy names, creation time, and results.



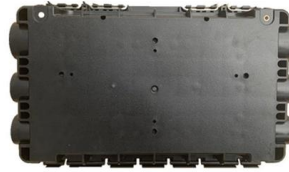
Cisco Catalyst PON Series Switches OLT Command Reference

Command Modes Global configuration (config)
Examples This example shows how to clear the ONT log buffering
Device> enable Device#
configure terminal Device(config)# clear ont



HUAWEI-XPON-TRAP-MIB MIB - Observium MIB Browser

HUAWEI-XPON-TRAP-MIB The MIB is used for defining Huawei's GPON and EPON management TRAP objects for both profile-mode and distributing-mode.



Huawei MA5800 GPON Configuration Guide , PDF

It outlines key differences from Cisco configurations and provides step-by-step instructions for setting VLANs, profiles, traffic tables, ONT connections, and

GPON ONU Configuration Guide , PDF , Internet

The document provides instructions for configuring and monitoring ONU devices connected to a GPON OLT. It shows how to register new ONUs, configure their



Huawei MA5600T GPON Board common command guide

This document describes the operation of GPON service board (such as GPBD/GPFD and so on) commonly used command on OLT.

Basic OLT Commands for Huawei GPON



It lists commands for checking uptime, boards, temperature, finding ONTs by serial number, ONT status, logs, power levels, versions, IP addresses, port status and



Huawei GPON configuration (commands) , Splynx Documentation

Learn how to configure Huawei GPON, set user and default routes, check status with commands, and remove ONT from configured Huawei ONL in this detailed guide.



How do I view the connected device information?

From Online Devices list, you can view the connected device information such as IP address, name, and MAC address. From the Offline Devices list, you can also view disconnected devices that were once



Netronixbd/OLT-and-Switch-Config-Troubleshooting

This repository serves as a technical knowledge hub for network engineers working with FTTH (GPON/EPON) infrastructure. It contains configuration commands, troubleshooting methods,





PON Interface Configuration Commands

To view the traffic statistics collected in a certain period, run the reset pon-statistic interface pon command to clear existing traffic statistics, and then run the display pon-statistic



Huawei OLT Command Guide: Part 2 , PDF

GPON - Basic Command OLT Huawei - Part 2 - NETWORKING.F - Free download as PDF File (.pdf), Text File (.txt) or read online for free. The document provides

Contact Us

For datasheets, pricing, or custom high-speed optical interconnect solutions, please visit:

<https://syropy.com.pl>