

# What are the core switches





## What are the core switches

---



### Core Switch Explained: Key Functions and Benefits

Unlike edge switches, core switches are the network's backbone, improving data routing and performance. This is essential for businesses, data centers, and ISPs that need fast, reliable

### What Is a Core Switch in Networking?

Unlike access switches, which connect directly to end-user devices, the core switch focuses on aggregating and routing traffic between other



### Understanding the Core Switch: Key Differences and Uses

A core switch is a high-capacity network switch that functions as a network's backbone or core layer. It's responsible for accurately routing

### Core Switches: The Pillar of Network Infrastructure

Core switches, as the name suggests, form the core or central part of a network, connecting several other switches in a network infrastructure. These



### Core Switch vs Normal Switch: Key Differences Explained

What Are Core and Normal Switches? Core Switch A core switch is the backbone of a network, managing high-speed data traffic between multiple

### Differences Between the Core Switch and Normal

A core switch is not a type of switch, but a switch placed at the core layer (the backbone of the network). Generally, large-scale enterprise networks



### What Is a Core Switch in a Network?

The core switch functions as the central point of the entire network, forming the high-speed backbone for the organization's data infrastructure. Its primary purpose is to provide an



## Understanding the Core Switch: Key Differences and Uses

Explore the core switch's role as the backbone of your network. Discover key differences, uses, and insights into layer 3 core switch technology.

### Product Catalog



## Core Switch

Definition of Core Switch A core switch is a high-capacity, central networking device that serves as the backbone of a computer network, facilitating

## Core Switches vs. Distribution Switches

Core switches and distribution switches are both essential components of a network infrastructure, each serving a specific purpose in ensuring the smooth operation of the network. Core switches are



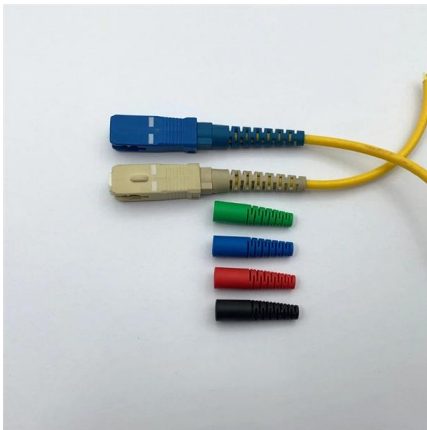
## Edgecore Networks Sets New Benchmark for AI

Edgecore's new 102.4T data center switch portfolio provides the foundation for these demanding environments, offering the industry's highest



## Core Switches and Normal Switches: A Practical

In modern network infrastructure, switches play a pivotal role in connecting devices and facilitating data transfer. However, not all switches are



### What is a Core Switch?

Spread the loveA core switch is a crucial component of a network infrastructure that serves as the backbone of a network. It's a high-performance switch that provides

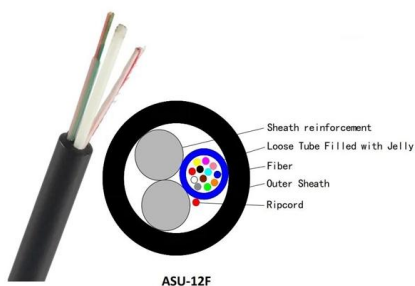
### What Is a Core Switch in Networking?

What Is a Core Switch in Networking? Understanding the Backbone of Your Network A core switch in networking serves as the high-capacity



### What Is a Core Switch? Network Backbone Architecture Guide

Think of a core switch as the high-speed interstate highway of your network. It does not inspect the cargo or check driver's licenses; its sole mandate is to move massive amounts of traffic



### Core Switch vs Normal Switch: Key



## Differences Explained

A core switch is the backbone of a network, managing high-speed data traffic between multiple segments. It's designed to handle significant



## What Is a Core Switch?

Sitting at the top of the hierarchical model, core switches interconnect distribution layer switches and provide high-speed data transfer across network segments. Unlike access or distribution switches, a

## What is a transformer and how does it work

Load Break Switches A transformer load break switch (LBOR switch) is a special rotary switch that allows electrical workers to manually disconnect the transformer



## What Is a Core Switch? Network Backbone Architecture Guide

Discover what a core switch does in a 3-tier network model. Learn about ASIC routing, collapsed core vs dedicated core topologies, and SMB sizing guides.



## What is a Core Switch , Functions and Difference over Normal Switch

What is a Core Switch? It is a powerful backbone switch in the center of the network core layer, which centralizes multiple aggregation switches to the core and implements LAN routing. The



### What Is a Core Switch in a Network?

Define the core switch--the central, high-speed backbone required for aggregating and routing massive volumes of enterprise network traffic.

### What Is a Core Switch?

A core switch is the backbone of a large-scale network, designed to handle massive volumes of traffic with ultra-low latency and maximum reliability. Sitting at the top of the hierarchical model, core



### Understanding Core Switch: What It Is and How to

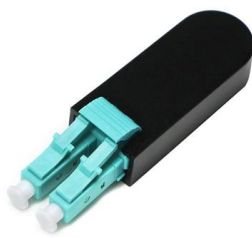
In the realm of system networking, three key types of switches are frequently mentioned: access switches, aggregation switches, and core switches.

## What is a Core Switch , Functions and



### Difference over Normal Switch

What is a core switch and how it works? This article builds the basics of this kind of switch for the ones who don't know anything about it. What is a Core Switch? It is a powerful

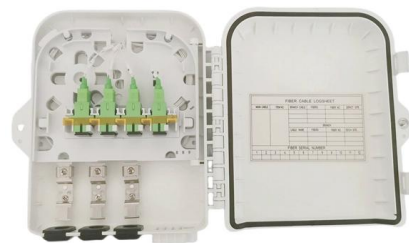


### Core Switch Explained: Key Functions and Benefits

Discover what a Core Switch is, its pivotal role in network architecture, and how it boosts performance and reliability in your data infrastructure.

### Understanding Core Switch: What It Is and How to

Typically, core switches are Layer 3 switches equipped with robust network management capabilities. They are characterized by numerous ports and



### Core Switch vs. Distribution Switch vs. Access Switch

What is a Core Switch? A core switch is the primary switch installed at the backbone of a layered or hierarchical network. These data switches are responsible for



## What Is a Switch? What Is It Used for?

What Is a Switch? A switch enables network communication for connected IT devices. Switches fall into different categories from different perspectives, including Ethernet switches, Layer



## What Is a Storage Area Network? SAN Explained

The core of a SAN is its fabric: the scalable, high-performance network that interconnects hosts -- servers -- and storage devices or subsystems.

## Contact Us

---

For datasheets, pricing, or custom high-speed optical interconnect solutions, please visit:  
<https://syropy.com.pl>