

What are the uses of a visual supplementary lighting module





Overview

In interior design, supplementary lighting is used to enhance the overall lighting scheme and create visually appealing and functional spaces. It can be used to accentuate architectural features, highlight artwork or decor, or provide task lighting for specific activities. The shadow increases & decreases i depends on the position of sou it i Fart h light enters your eye and interf sed by i in is to cause discomfort to those around it.



What are the uses of a visual supplementary lighting module

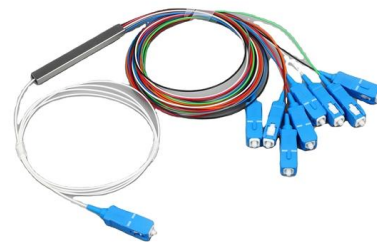


THE ENERGY EFFICIENCY OF SUPPLEMENTARY LIGHTING

Therefore, it is necessary to achieve high internal comfort parameters including lighting quality. The visual comfort is determined by required illuminance level at working plan. In the most of the office

Controls Product Guide Utility Product Guide

Benefits of Signify lighting controls Energy savings - By using intelligent lighting systems features such as Adaptive Dimming and Dwell Time (from Interact Pro), lighting is only used when needed and



Controls Product Guide

It includes maintenance tools, detailed reports of energy usage, lighting status, and system performance, paired with an easy-to-use console and clear and concise floor plans.

What Is Supplementary Lighting

Photographers utilize supplementary lighting to control lighting conditions and achieve desired effects in their photographs. It can be used to fill



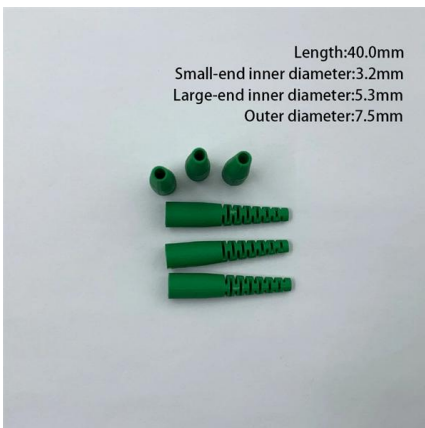
LED Module Downlight 2025 Guide , Benefits, Types

LED module downlights are transforming how we light up residential and commercial interiors. With their modular design, high efficiency, and flexibility in application,



Lighting Control Module Explained Benefits and Uses

A lighting control module is an essential component in a lighting control system that manages how lights are powered, dimmed, or switched on and off.



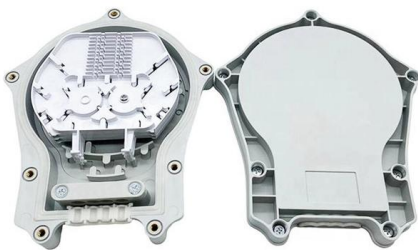
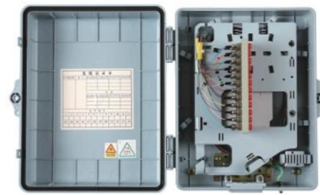
A Comprehensive Guide to Laser Modules and Laser

Laser light modules are a versatile and increasingly popular technology used in a wide range of applications, from industrial processes to



Simulation Analysis of an ETC Monitoring and Imaging Supplementary

This paper explores the mechanism by which ETC gantry monitoring and imaging supplementary lighting devices affect drivers' visual responses. Using DIALux 4.13 simulation software, a model of



What is Supplementary Lighting

It can be used in commercial and residential spaces to supplement ambient lighting levels or provide task lighting in specific areas where additional illumination is required.

Clever lighting to suit varied needs Smart Hybrid Light Cameras

01 Low-light Imaging Challenges Supplemental lighting enables security cameras to "see" clearly in dim environments. Conventional cameras with infrared (IR) light provide black & white images which



A theoretical approach for therapeutic artificial supplementary

Thus, custom-designed supplementary artificial lighting is needed. In this work, based on literature review and a synthesis of the light patterns related to antidepressant efficacy, visual



Chapter1 0 Supplementary lighting

providing supplementary lighting. The most obvious is to increase assimilation when natural light is scarce, thereby increasing yield and product quality. No less important is a positive ef



The research on LED supplementary lighting system for plants

In order to study the improvement of the cherry tomato growth rate using the LED light source, we have a design with a certain ratio of red and blue (relative spectral distribution) LED

Intelligent Light Emitting Diode Flashing Supplementary Lighting

Considering the inherent advantages of the Light Emitting Diode (LED) in the field of illumination, this work designs an intelligent supplementary lighting system using LED as the light



Supplemental Lighting for the Greenhouse

With careful calculations, supplemental lighting can increase growth rates and keep light levels of a greenhouse at the ideal intensity for optimal results. For hobby greenhouse growers,



430470_1_En_2_Chapter 27..36

The line-type LED lighting system is equipped with LED lamps arrayed in a linear fashion and is easy to handle and can be used not only for downward lighting but also for sideward lighting.



The research on LED supplementary lighting system for plants

New type energy saving and high efficient light supplement technology are becoming a hot area of research in recent years. The successful development of the new luminous material provides

LED Supplementary Lighting , Springer Nature Link

Supplementary lighting is used to improve plant growth; to control plant morphogenesis, including flowering; to protect the plants from diseases; and to improve plant quality. LED technology



A Supplementary Lighting System for Plant Growth with Lighting

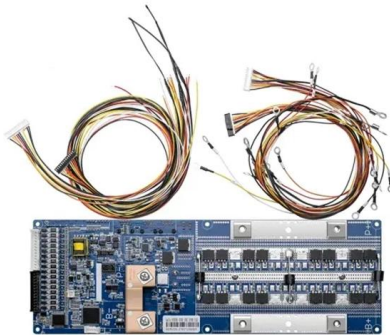
Abstract. In order to achieve quantitative supplementary lighting at different stages of plant growth, design a lighting system with LED that can provide different light quality. The system monitor



Unit 8



Serve as shields to partially screen the lamps from view. Typically used for industrial installations or in storage areas of commercial buildings. Lamps are fitted into architectural components of a room.

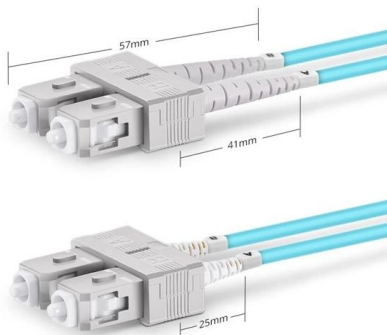
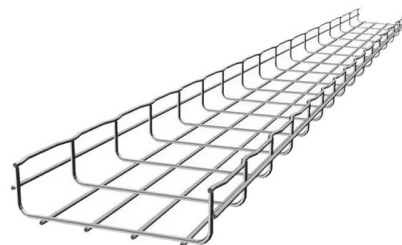


supplementary lighting

supplementary lighting [10.1.2] Lighting that is used to provide an additional quantity and quality of illuminance that cannot readily be obtained by a general lighting system and that supplements the

Design Aids for Supplementary Lighting Design in India

Abstract This paper presents a design aid which will help to integrate daylight in indoor lighting and optimize the use of artificial lighting in buildings for different climate zones in India. An index, average



Duplex SC UPC

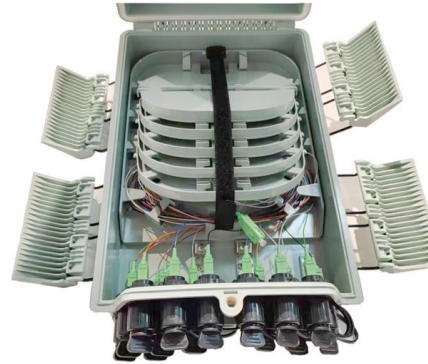
What are the Functions of Intelligent Lighting Control Module?

All kinds of intelligent modules are connected to the intelligent central controller by wired or wireless means to receive the centralized control instructions of the central controller. The



A supplementary lighting and regulatory scheme using a multi

This study proposes a supplementary lighting and regulatory scheme for application in semi-closed crop production systems. This supplementary lighting control module is primarily based



What is Supplementary Lighting

Supplementary lighting is the practice of using additional artificial light sources in conjunction with natural light to enhance or supplement existing lighting conditions.

Supplementary Artificial Lighting

o PSALI systems are designed that artificial illumination levels where natural light is inadequate and should mitigate the appearance of gloom in those parts of a building space that are remote from



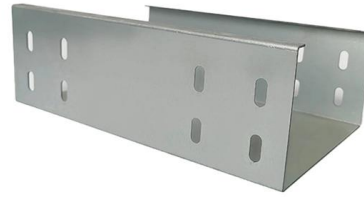
Chapter1 0 Supplementary lighting

Supplementary light is also applied for day-length control in ornamental crops, to induce or prevent flowering in long-day plants and short-day plants, respectively. Additional light is also used in plant



01 Illumination Engineering: EE366 MODULE 1

When illuminated by multiple sources, the amount of light wasted on account of overlapping and falling of light beyond the edges of the area to be illuminated.



Supplemental lighting: Common pitfalls and practical solutions

However, sometimes growers aren't fully realizing the potential benefits of LEDs. This article discusses some of the pitfalls of supplemental lighting and opportunities to more effectively utilize LED (or

Illumination Technology Module 1 Lecture Notes

One of the major aspects of the lighting practice and recommendations is to



Contact Us

For datasheets, pricing, or custom high-speed optical interconnect solutions, please visit:
<https://syropy.com.pl>