

# What does OTU optical module mean





## What does OTU optical module mean

---



### Table of Contents

- 1 Scope
- 2 References
- 3 Definitions
  - 3.1 Terms defined elsewhere
  - 3.2 Terms defined in this Recommendation
- 4 Abbreviations and acronyms
- 5 Conventions
  - 5.1 Notational
  - 5.2 Diagrammatic
- 6

### Optical transport network

An optical transport network (OTN) is a digital wrapper that encapsulates frames of data, to allow multiple data sources to be sent on the same channel. This creates an optical virtual private network for each client signal. ITU-T defines an optical transport network as a set of optical network elements (ONE) connected by optical fiber links, able to provide functionality of transport, multiplexing



### What are the Rates of Optical Transport Network (OTN)?

In the OTN protocol, a variety of rate definitions appear. Beneath these rates are the underlying principles of the OTN protocol and some key



### Optical Transport Network

Optical transport network comprises a set of optical network elements connected by optical fiber links, capable of providing functionalities such as transport, multiplexing, switching,



### Chapter5 The Optical Transport Network

The optical channel layer network provides end-to-end networking of optical channels to convey transparently client information of different format, such as SONET/SDH, PDH 565 Mbps, ATM. This



### General Optical Signal flow - MapYourTech

General Optical Signal Flow - OTU, OCH, ODU Explained , MapYourTech Recently I came across a non-optical background candidate who



### OTN (G.709) Reference Guide

The OCh payload consists of an electrical substructure, where the optical channel transport unit (OTU) is the highest multiplexing level. This layer is the digital layer--also known as the "digital





### What is an Optical Transponder Unit (OTU)?

OTU is short for Optical Transponder Unit. It converts gray optical signals from different client sides into colored optical signals that comply with WDM international standards. In simple terms



### OTN: Understanding ODU and OTU Differences

This enables the ports of the interface modules to work in layer 1 optical mode in conformance with standard G.709. OTN Wrapper Overview 1 OTN Frame The



### OTNtutorial

Summary This document provides a tutorial for Optical Transport Network standards and their applications. The objective is to provide the telecommunications engineers with a document that



### General Optical Signal flow - MapYourTech

ODU with OH and FEC (Forward error correction) makes OTU. OTU is used in the OTN to support transport via one or more optical channel





## THE G.709 OPTICAL TRANSPORT NETWORK -- AN OVERVIEW

First, it defines the optical transport hierarchy of the OTN; second, it defines the functionality of its overhead in support of multiwavelength optical networks; and third, it defines its frame structures, bit



### OTU vs. OTN in Optical Network Explained

This video is a comprehensive guide aimed at demystifying the concepts of OTU, WDM, and their crucial roles in enhancing network flexibility and efficiency.

### Optical Transport Network

The optical channel transport unit (OTU) and optical channel data unit (ODU) have similar functions as the section, line, path layers of SONET/SDH. The OTU is similar to the section layer of SONET/SDH,



### Optical Transport Network Optical Service Unit (OTN OSU) and Its

Power communication technology is an important part of the digitalization of power systems in smart grid. Our goal is always to build a digital communication network with high bandwidth, security, and



## ODU/ODUk - Optical Data Unit

This blog post describes the ODU (Optical Data Unit) frame structure. This post also defines each of the overhead fields within an ODU frame.



## What is OTN (Optical Transport Networking)?

The Optical Transport Unit (OTU) contains the ODU overhead and payload, provides the section-level overhead (such as BIP8), and supports General Communication

## The OTU (Optical Transport Unit) Frame

This blog post describes and defines the OTU (Optical Transport Unit) frame structure. This blog post also defines each of the OTU Overhead fields.



## What is OTU, Features, Application, Package , Yingda

OTU4 is optical transport unit 4, it is a very specific and common type of optical transceiver module used in telecommunications and high-end data center interconnect (DCI) networks.



## ITU-T Rec. Series G Supplement 58 (02/2016) Optical transport

Summary Supplement 58 to ITU-T G-series Recommendations describes several interoperable component-to-component multilane interfaces (across different vendors) to connect an optical



### Optical transport network

Summary This document provides a tutorial for Optical Transport Network standards and their applications. The objective is to provide the telecommunications engineers with a document that

### The Ultimate OTN Guide for Optical Networks

Optical Transport Network (OTN) is a high-speed transport technology designed to provide a robust and scalable infrastructure for optical networks. At its core, OTN is built around the principle of



### Optical Transport Network: OTU and Line Card Innovations Explained

Explore the evolution of network technology with our detailed breakdown of Optical Transport Units (OTUs) and line cards, crucial components that enhance network flexibility and efficiency.



This document provides an overview of Optical Transport Network (OTN) basics, including multiplexing and mapping structures, as well as User to Network Interface (UNI) and Network to Network



### THE G.709 OPTICAL TRANSPORT NETWORK -- AN OVERVIEW

The termination of the OTS, OMS and OCh layers is performed at the optical level of the OTN. It is at the termination of the OTU layer that further functionality can be added. This layer is the digital

### OTU Optical Transport Unit

What is the abbreviation for Optical Transport Unit? What does OTU stand for? OTU stands for Optical Transport Unit.



### PowerPoint Presentation

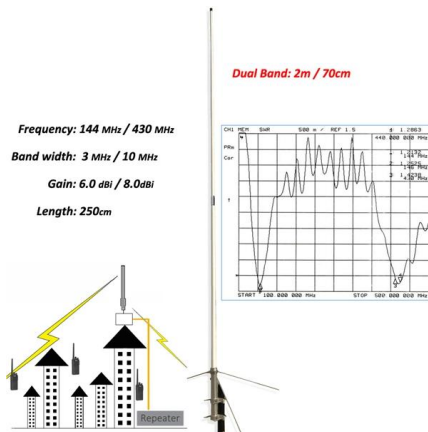
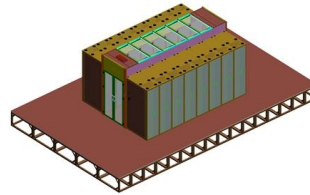
This Presentation does not purport to be all-inclusive or necessarily to contain all the information that an interested party might desire in investigating the Company. Any acquirer or investor should conduct





## Optical Transport Network

They are structured in hierarchical levels called Optical Channel Payload Unit (OPU), Optical Channel Data Unit (ODU) and Optical Channel Transport Unit (OTU). The ODU signals are the end-to-end



## The Most Comprehensive Guide Of Optical Modules

Explore the ultimate guide to optical modules. Learn types, functions, performance metrics & how to choose the right module for your fiber network.

## Contact Us

For datasheets, pricing, or custom high-speed optical interconnect solutions, please visit:  
<https://syropy.com.pl>