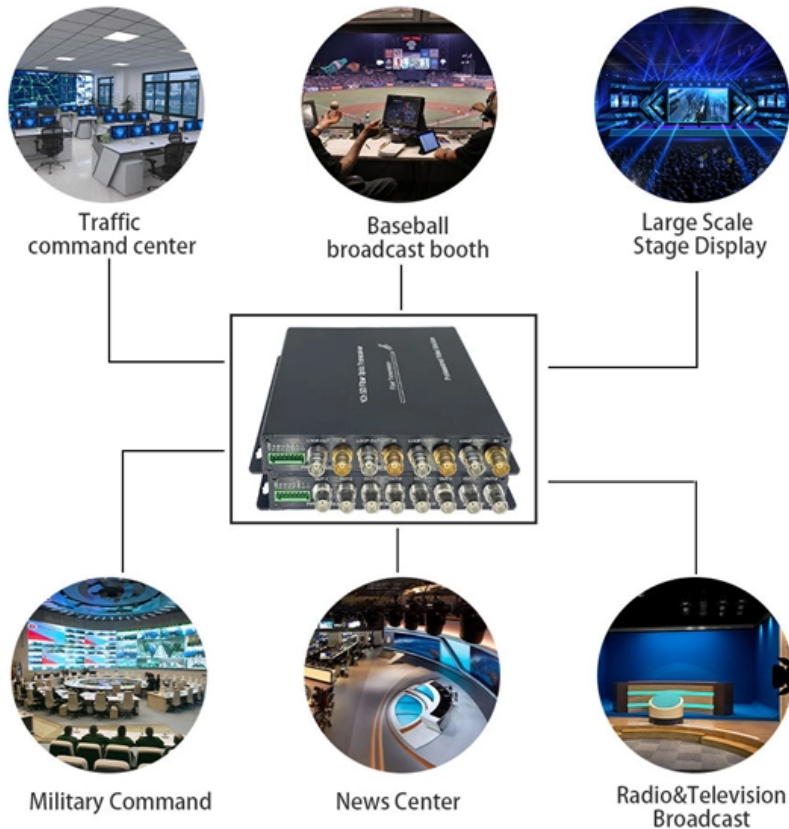


What optical module does Huawei AAU use





What optical module does Huawei AAU use



Huawei AAU Solution Ushering in an Era of Massive

Huawei announced the deployment of its innovative Active Antenna Unit (AAU) Solution on 100 commercial networks worldwide. This solution is an

AAU?RRU?BBU huawei zte base stations new and

AAU?RRU?BBU huawei zte base stations new and original yciict 2g 3g lte 5g module fthh and ont olt optical transmission new and original good prices



forum.huawei

We're sorry but web site doesn't work properly without JavaScript enabled. Please enable it to continue. Loading

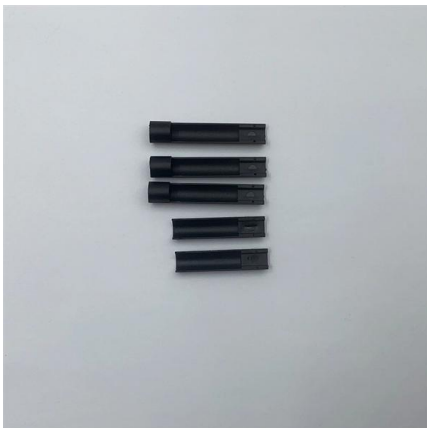
Explain the concept of Huawei's Active Antenna Unit

Huawei's Active Antenna Unit is a critical component in 5G network architecture, incorporating advanced technologies such as Massive MIMO and



Huawei AAU Guide: How to Choose the Right 5G Active Antenna Unit

About Huawei AAU: Definition and Typical Use Cases A Huawei AAU--Active Antenna Unit--is not just an antenna. It's an integrated hardware module combining RF transceivers, digital



Technical Specifications

Its content derives from the sections "AAU5811 Technical Specifications" and "Power Configuration Rules for RF Modules" in AAU Technical Specifications. In this and subsequent releases, this



Hardware Description

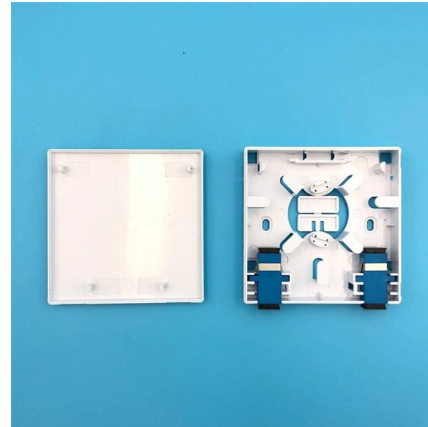
Optical port 1 with a maximum data rate of 9.8 Gbit/s for connecting a BBU. An optical module must be inserted into the port for optical fiber installation. The exteriors and labels of optical modules in this





Huawei's Active Antenna Unit (AAU) Network System

Huawei's AAU Family is installed and in commercial use by over 120 operators in 60 countries. The AAU solution family includes the Multiband AAU, Easy Macro



Huawei AAU

JEMSdata, acquired by 1COM in 2007, buys sells and trades network and telecom equipment worldwide in over 50 countries; Huawei Core Network, UMG8900,



AAU3902 Hardware Description , PDF , Cable , Optical

A multimode fiber optic cable and single-mode fiber optic cable are connected to a multimode optical module and single-mode optical module,



HUAWEI AAU3940 AAU Hardware Maintenance Guide

This Hardware Maintenance Guide is for AAU AAU3940. It provides instructions for routine maintenance, powering on and off, replacing the AAU and modules, and replacing optical modules.



AAU5649 Hardware Description (02) (PDF)

Optical modules to be installed must match the rates of their corresponding ports. Only Huawei-certified optical modules meeting the following requirements can be used



Technical Specifications

In the AAU Configuration Combination column containing xA+yP, A indicates the active module and P indicates the passive module that is not installed in the AAU slot. x and y indicate the frequency

AAU3902 Hardware Description

Optical Module Type Optical modules can be divided into single- and multimode optical modules, which can be distinguished as follows: | The puller of a single-mode optical module is blue



AAU5613 Hardware Description (01) (PDF)-EN

The maximum distance supported by an AAU power cable is 100 m (328.08 ft). Contact Huawei engineers when an AAU power cable longer than 100 m (328.08 ft) is required. 1.3.4 CPRI Fiber



AAU5613 Hardware Description

Contact Huawei engineers when an AAU power cable longer than 100 m (328.08 ft) is required.
1.3.4 CPRI Fiber Optic Cable Fiber optic cables are used to transmit



AAU5313 Hardware Description (05) (PDF)

Optical modules to be installed must match the rates of their corresponding ports. Only Huawei-certified optical modules meeting the following requirements can be

AAU5835f Hardware Description

The actual exteriors and labels may be different.
Optical modules to be installed must match the rates of their corresponding ports. Only Huawei-certified optical



AAU5339w Hardware Description (01) (PDF)

Optical modules to be installed must match the rates of their corresponding ports. Only Huawei-certified optical modules meeting the following requirements can be



AAU3940 Installation Guide

AAU3940 Installation Guide: Detailed instructions for installing the AAU, cables, and auxiliary hardware. Includes checklists for hardware installation.



Huawei AAU3940 Users Guide

Before installing an AAU, take power terminals out of its maintenance cavity and install optical modules.

Hardware Description

2 AAU Introduction This chapter describes the exterior, function modules, combinations, RET system, technical specifications of the AAU, and engineering specifications of the RU.



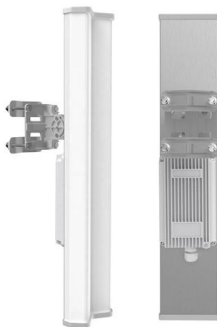
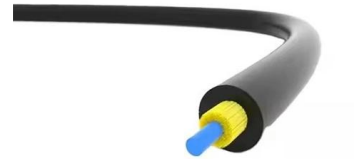
Installation Guide

7 Preprocessing the AAU Maintenance Cavity Before installing an AAU, take power terminals out of its maintenance cavity and install optical modules.



AAU5356 Description , PDF , Mimo , Antenna (Radio)

The document provides an overview of the AAU5356 product by Huawei Technologies, detailing its characteristics, technical specifications,

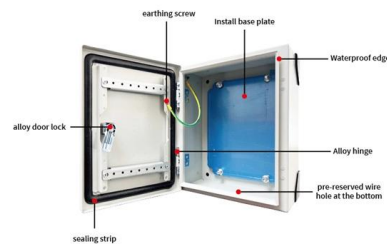


Huawei AAU Guide: How to Choose the Right 5G Active Antenna Unit

A practical, no-fluff guide to Huawei AAUs--what they are, how they differ across models (Blade, Meta, Tri-band), key specs to evaluate, and when a specific AAU makes sense for your

AAU3902 Hardware Description (10) (PDF)

The exterior and label on an optical module in this section are for reference only. Only Huawei-certified optical modules meeting the following requirements can be used



(Video) AAU5831 Hardware Installation

- 01-Installation Overview.mp4
- 02-Installing the Optical Module and Preparing Cables.mp4
- 03-Operations Under the Tower (Integrated Lifting).mp4
- 03-Operations Under the Tower (Separated)



Contact Us

For datasheets, pricing, or custom high-speed optical interconnect solutions, please visit:

<https://syropy.com.pl>