

ZTE Huijue Core Switch





ZTE Huijue Core Switch

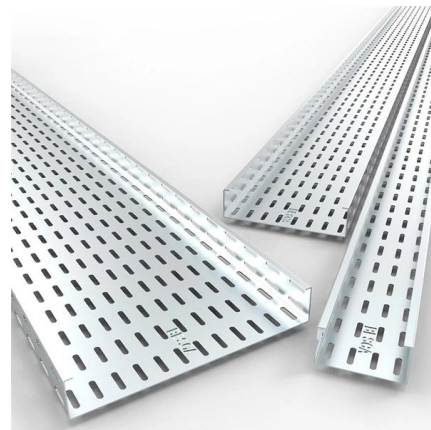


Telecom Cabinet Manufacturer, fiber optical patch cord, 12 core patch

Telecom Cabinet Supplier, fiber optical patch cord, 12 core patch cords Manufacturers/ Suppliers - Shanghai Huijue Network Communication Equipment Co., Ltd.

ZTE Ethernet Switches , ZTE Enterprise Switches

ZTE ZXR10 8905E switch consists of a chassis, power subracks, cards, a fan subrack, and a back panel. It uses a standard 19" chassis that can be installed

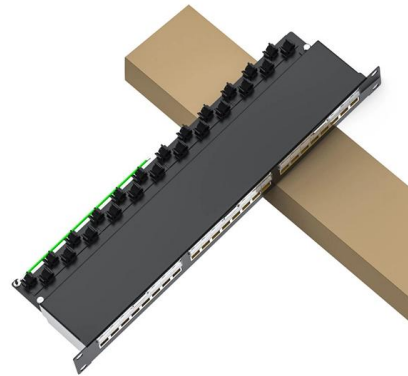


ZXR10 9900 Datasheet

The ZXR10 9900 Series switches is ZTE's new generation of large-capacity, high-performance, highly reliable core switches oriented to data center. It provides large switching capacity, high density

Campus Ethernet Switch-Fully connected networks in smart scenarios,ZTE

Zte campus ethernet switche, with rich interfaces, plug and play, high-speed access, and self-healing protection mechanism, are widely used in telecommunications, transportation, campus, hospital,



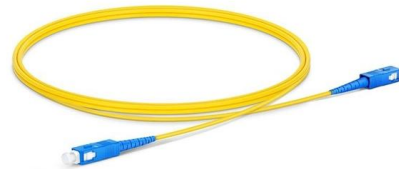
ZTE ZXR10 9900 Series Switch Datasheet ZTE

By supporting rich L2 switching and L3 routing functions and low latency forwarding, the ZXR10 9900/9900-S Series switch can bear lots of service including WLAN, Internet, Voice, Video,



ZXR10 5960X-HF/HG

The ZXR10 5960X-HF/HG series of switch is a new-generation carrier-grade 1RU switch launched by ZTE for data center scenarios and Metro-E scenarios. It



ZTE ZXR10 5960-H Series Switch Data Sheet

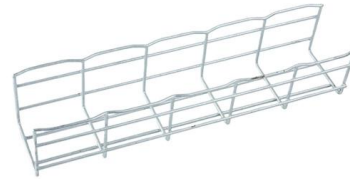
ZTE ZXR10 5960-H Series Switch Data Sheet Updated: January 30, 2019 The ZXR10 5960-H Series switch is next-generation carrier-grade data center TOR (Top of Rack) switch with ultra-big switching





Campus Core Switch

Campus Core Switch Our website uses cookies to distinguish you from other users of our website. This helps us to provide you with a good experience when you browse our website and also allows us to



ZTE ZXR10 8905E Core Switch Overview

ZTE ZXR10 8905E Core Switch Overview This document provides an overview of the hardware components and architecture of the ZTE ZXR10 8905E core switch.

Microsoft Word

ZXR10 8900E series core switch is a milestone of the decade from ZTE. With supreme T-bit capacity, cluster architecture and rich service ability, ZXR10 8900E family brings a new generation networks



ZTE ZXR10 5960-H Series Switch Data Sheet

Product Overview The ZXR10 5960-H Series switch is next-generation carrier-grade data center TOR (Top of Rack) switch with ultra-big switching capacity and low latency. It provides high density



Huijue Core Network ITC Equipment Room Upgrade at Jiangxi

Huijue transformed the core network ITC equipment room at Jiangxi Telecom Tower, improving efficiency, reliability, and 5G readiness for the core network to further drive digital innovation in



ZXR10 5960X-HF/HG

It provides high-density 10GE/25GE/40GE/100GE interfaces, an ultra-large switching capacity, advanced data center features, complete MPLS functions, and carrier



ZTE ZXR10 9900 Series Switch Datasheet

The ZXR10 9900/9900-S Series switch is ZTE's new generation of large-capacity, high-performance, highly reliable core switches oriented to data center. It provides large switching capacity, high density



ZXR10 C89E-12

The ZXR10 C89E-12 switch is an high-end modular switch featuring big switching capability, L2/L3/MPLS service capability, VXLAN/EVPN capability, high



ZXR10 9900 (-S) , Bearer , ICT Hardware

The ZXR10 9900/9900-S Series switch is ZTE's new generation of large-capacity, high-performance, highly reliable core switches oriented to data center. It provides large switching capacity, high density



ZTEZXR109900SeriesSwitchDatasheet ZTE

Product Overview The ZXR10 9900/9900-S Series switch is ZTE's new generation of large-capacity, high-performance, highly reliable core switches oriented to data center. It provides large switching



ZXR10 9900

ZXR10 9900 The ZXR10 9900/9900-S Series switches are ZTE's large-capacity, high-performance, high-reliability core switches oriented to data centers. They



ZTE ZXR10 9900 Series Switch Datasheet

ZTE ZXR10 9900 Series Switch Datasheet Product Overview The ZXR10 9900/9900-S Series switch is ZTE's new generation of large-capacity, high-performance, highly reliable core switches oriented to





China's ZTE launches flexible Top-of-Rack switch

Top of the rack The ZXR10 5960-4M is a 2U switch that has four card slots, offering switching capacity of up to 6.4 TB/s, packet forwarding rate of up to

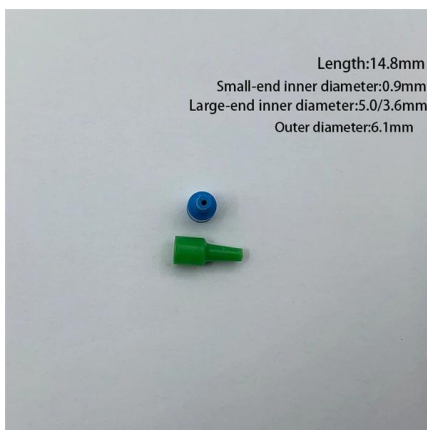


ZTE Unveils Large Capacity Core Switches and New

ZTE unveiled its ZXR10 9900E series next-generation data center switches that the Company claims as the largest core switches in terms of capacity.

ZXR10 C89E-8

The ZXR10 C89E-8 switch is an high-end modular switch featuring big switching capability, L2/L3/MPLS service capability, VXLAN/EVPN capability, high



Length:14.8mm
Small-end inner diameter:0.9mm
Large-end inner diameter:5.0/3.6mm
Outer diameter:6.1mm

ZTE ZXR10 Switches Ultimate Guide: Core Architecture, TCO

The following table aggregates data from the ZXR10 9900X (core chassis), 6800X (top-of-rack), and 5900X (enterprise aggregation) series. All values are verified against IEEE



ZTE ZXR10 9900 Series High-Capacity Core Switch

The ZXR10 9900 Series switch uses advanced CLOS hardware architecture and provides up to 84.5Tbps wire-speed switching capacity with high capacity service cards including: 48 x10GE



ZTE 8902E Switch Core Switch

Product descriptions from the supplier Product Description ZTE 8902E Switch Core Switch 2 interface board slots, 2 control board slots and 2 power supply module slots. 4RU, side-to-side airflow Delivery

Understanding ZTE Switches: Powering Modern Networks Worldwide

By understanding the different types (Access, Aggregation, Core, Data Center) and recognizing ZTE's strengths in performance, feature sets, reliability, cost-effectiveness, and future readiness, you can



Contact Us

For datasheets, pricing, or custom high-speed optical interconnect solutions, please visit:
<https://syropy.com.pl>